

Commodity: Refined Soybean Oil
Contract: Apr

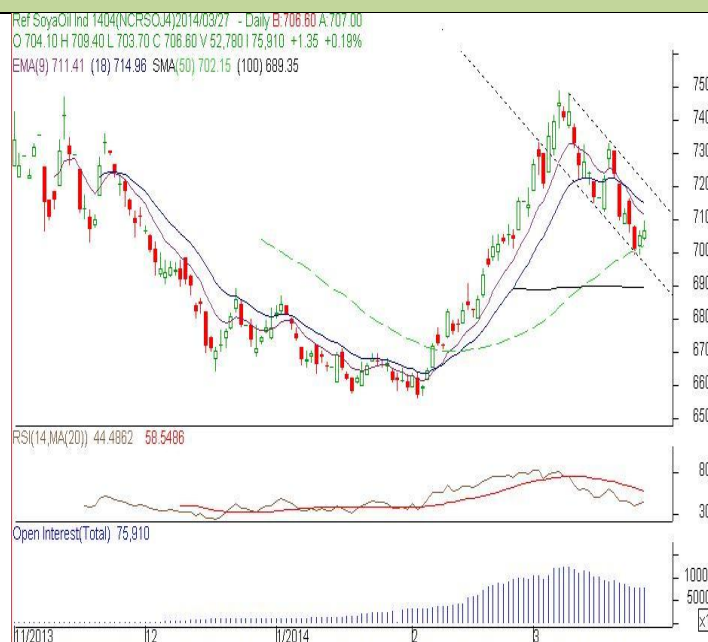
Exchange: NCDEX
Expiry: Apr 20th, 2014

REFINED SOYBEAN OIL (RSBO)

Technical Commentary:

- Candlestick chart pattern indicates losses in the market. However market may consolidate.
- Prices closed below 9-day EMA and 18D EMA which support the bears. PVO analysis depicts short covering in the market.
- Oscillator RSI is moving towards neutral zone.

The soy oil prices are likely to feature sideways movement.



Strategy: Buy

Intraday Supports & Resistances			S2	S1	PCP	R1	R2
Refined Soy Oil	NCDEX	Apr	690.00	693.00	706.60	712.00	715.00
Intraday Trade Call			Call	Entry	T1	T2	SL
Refined Soy Oil	NCDEX	Apr	Buy	Above 708	710.50	711	706.50

* Do not carry-forward the position next day.

Commodity: Crude Palm Oil
Contract: Apr
Exchange: MCX
Expiry: Apr 30th, 2014
CRUDE PALM OIL (CPO)
Technical Commentary:

- Candlestick chart pattern reflects losses in the market. However market may consolidate.
- Prices closed below 18-day EMA support the bears. PVO analysis depicts consolidation in the market.
- Oscillator RSI is moving in the neutral zone.

The CPO prices are likely to feature range bound today.

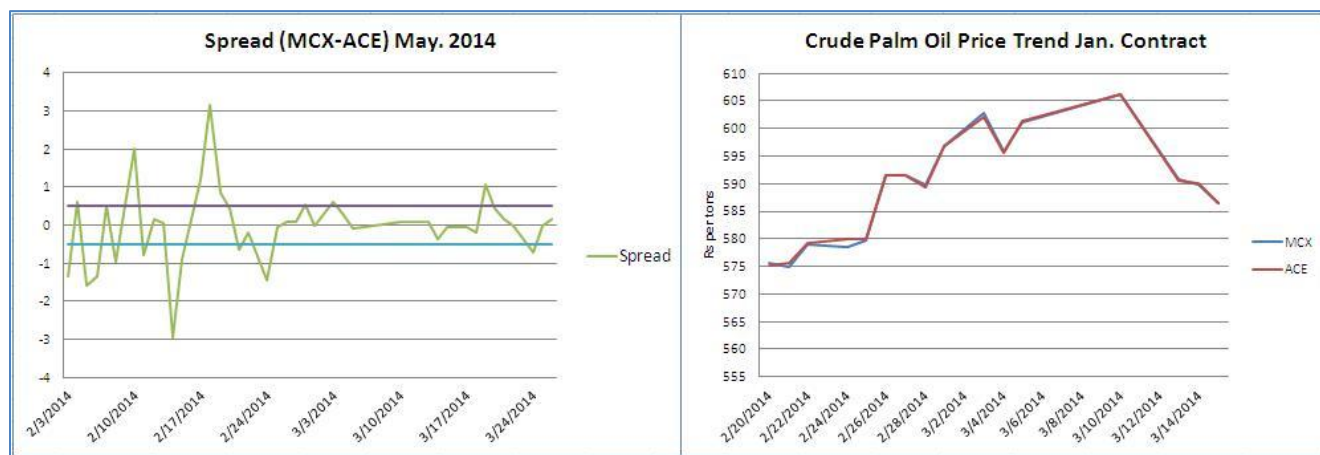

Strategy: Buy

Intraday Supports & Resistances			S2	S1	PCP	R1	R2
Crude Palm Oil	MCX	Apr	567.00	570.00	575.70	587.00	591.00
Intraday Trade Call			Call	Entry	T1	T2	SL
Crude Palm Oil	MCX	Apr	Buy	Above 575.00	579.50	579.80	572.30

* Do not carry-forward the position next day.

MCX-ACE Crude Palm OIL SPREAD:

The MCX-ACE CPO spread is hovering near to 0.15 levels. Arbitrage opportunity is seen above 0.5 and below – 0.5 levels.



Inter Exchange Arbitrage				
Exchange	Exp Month	Prices	Buy/Sell	Strategy
MCX	May,14	568	-	No Arbitrage opportunity seen between MCX-ACE CPO May Contract.
ACE	May,14	567.85	-	
26-Mar-14	Spread	0.15		
Investment	Gross Return	Net Return		Expected Net Return in %
56792.5	150	-258.906		-0.46
*Net Return = Gross Return - (Brokerage+CTT+ other charges)				

Arbitrage Opportunity:

No Arbitrage opportunity seen between MCX-ACE CPO May Contract.

Disclaimer

The information and opinions contained in the document have been compiled from sources believed to be reliable. The company does not warrant its accuracy, completeness and correctness. Use of data and information contained in this report is at your own risk. This document is not, and should not be construed as, an offer to sell or solicitation to buy any commodities. This document may not be reproduced, distributed or published, in whole or in part, by any recipient hereof for any purpose without prior permission from the Company. IASL and its affiliates and/or their officers, directors and employees may have positions in any commodities mentioned in this document (or in any related investment) and may from time to time add to or dispose of any such commodities (or investment). Please see the detailed disclaimer at <http://www.agriwatch.com/Disclaimer.asp>
 © 2014 Indian Agribusiness Systems Pvt Ltd.