

Commodity: Refined Soybean Oil
Contract: June

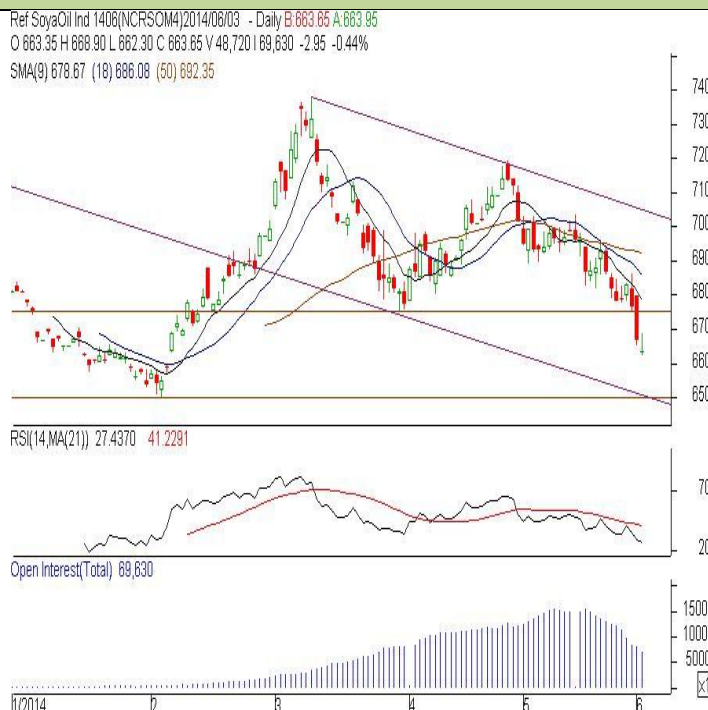
Exchange: NCDEX
Expiry: June 20th, 2014

REFINED SOYBEAN OIL (RSBO)

Technical Commentary:

- Candlestick chart pattern indicates losses in the market. We expect prices may consolidate in the near term.
- Prices closed below 18D SMA which support the bears. PVO analysis depicts long liquidation in the market.
- Oscillator RSI is moving towards neutral zone.

The soy oil prices are likely to feature sideways movement.



Strategy: Buy

Intraday Supports & Resistances			S2	S1	PCP	R1	R2
Refined Soy Oil	NCDEX	June	655.00	658.00	663.65	672.00	675.00
Intraday Trade Call			Call	Entry	T1	T2	SL
Refined Soy Oil	NCDEX	June	Buy	Above 664.00	668.00	669.00	661.60

* Do not carry-forward the position next day.

Commodity: Crude Palm Oil
Contract: June
Exchange: MCX
Expiry: June 30th, 2014
CRUDE PALM OIL (CPO)
Technical Commentary:

- Candlestick chart pattern reflects losses in the market. However, we expect prices may feature consolidate in the near term.
- Prices closed below 18-day SMA and 50-day SMA support the bears. PVO analysis depicts long liquidation in the market.
- Oscillator RSI is moving in the neutral zone.

The CPO prices are likely to feature range bound today.


Strategy: Buy

Intraday Supports & Resistances			S2	S1	PCP	R1	R2
Crude Palm Oil	MCX	June	494.00	498.00	505.80	512.00	515.00
Intraday Trade Call			Call	Entry	T1	T2	SL
Crude Palm Oil	MCX	June	Buy	Above 504.00	510.00	511.00	500.40

* Do not carry-forward the position next day.

Disclaimer

The information and opinions contained in the document have been compiled from sources believed to be reliable. The company does not warrant its accuracy, completeness and correctness. Use of data and information contained in this report is at your own risk. This document is not, and should not be construed as, an offer to sell or solicitation to buy any commodities. This document may not be reproduced, distributed or published, in whole or in part, by any recipient hereof for any purpose without prior permission from the Company. IASL and its affiliates and/or their officers, directors and employees may have positions in any commodities mentioned in this document (or in any related investment) and may from time to time add to or dispose of any such commodities (or investment). Please see the detailed disclaimer at <http://www.agriwatch.com/Disclaimer.asp>
 © 2014 Indian Agribusiness Systems Pvt Ltd.