

Commodity: Refined Soybean Oil  
Contract: July

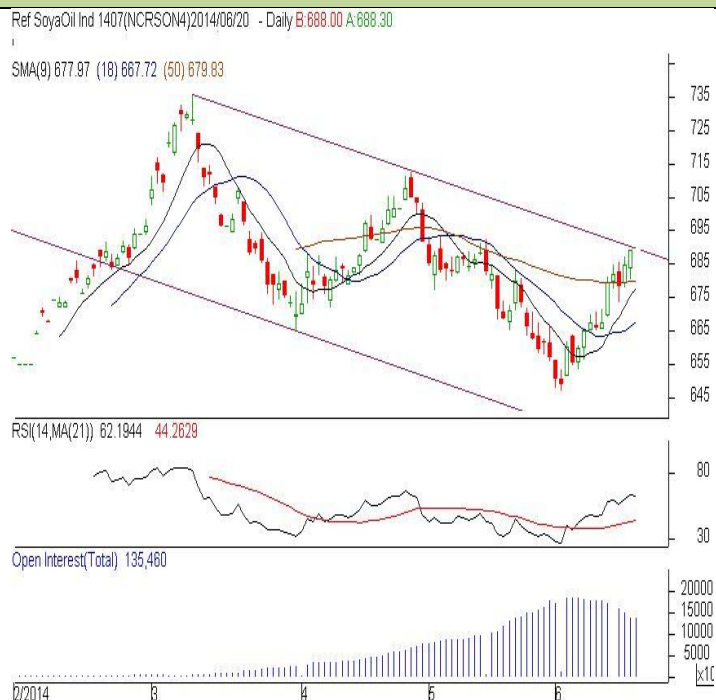
Exchange: NCDEX  
Expiry: July 20<sup>th</sup>, 2014

### REFINED SOYBEAN OIL (RSBO)

#### Technical Commentary:

- Candlestick chart pattern indicates slight gains in the market.
- Prices closed above 18D SMA which support the bulls. PVO analysis depicts long build up in the market.
- Oscillator RSI is moving towards neutral zone.

*The soy oil prices are likely to feature sideways to firm movement.*



**Strategy: Buy**

Intraday Supports & Resistances			S2	S1	PCP	R1	R2
Refined Soy Oil	NCDEX	July	677.00	680.00	688.95	696.00	699.00
Intraday Trade Call			Call	Entry	T1	T2	SL
Refined Soy Oil	NCDEX	July	Buy	Above 687	690	691	685.20

\* Do not carry-forward the position next day.

**Commodity: Crude Palm Oil**  
**Contract: July**
**Exchange: MCX**  
**Expiry: July 30<sup>th</sup>, 2014**
**CRUDE PALM OIL (CPO)**
**Technical Commentary:**

- Candlestick chart pattern reflects recovery in the market.
- Prices closed above 9-day SMA and 18-day SMA support the bulls. PVO analysis depicts short covering in the market.
- Oscillator RSI is moving in the neutral zone.

*The CPO prices are likely to feature range bound to slightly firm tone today.*


**Strategy: Buy**

Intraday Supports & Resistances			S2	S1	PCP	R1	R2
Crude Palm Oil	MCX	July	519.50	521.00	526.80	535.00	538.00
Intraday Trade Call			Call	Entry	T1	T2	SL
Crude Palm Oil	MCX	July	Buy	Above 526.00	530.00	531.00	523.60

\* Do not carry-forward the position next day.

**Disclaimer**

The information and opinions contained in the document have been compiled from sources believed to be reliable. The company does not warrant its accuracy, completeness and correctness. Use of data and information contained in this report is at your own risk. This document is not, and should not be construed as, an offer to sell or solicitation to buy any commodities. This document may not be reproduced, distributed or published, in whole or in part, by any recipient hereof for any purpose without prior permission from the Company. IASL and its affiliates and/or their officers, directors and employees may have positions in any commodities mentioned in this document (or in any related investment) and may from time to time add to or dispose of any such commodities (or investment). Please see the detailed disclaimer at <http://www.agriwatch.com/Disclaimer.asp>  
 © 2014 Indian Agribusiness Systems Pvt Ltd.