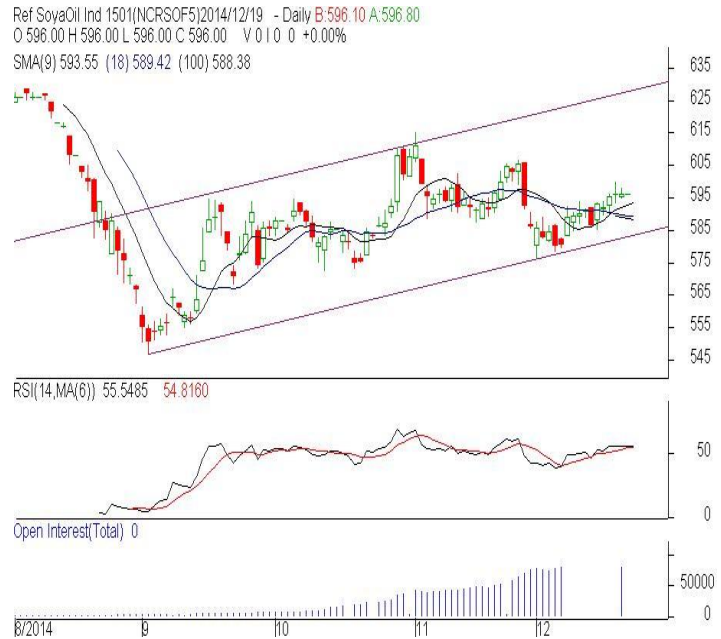


Commodity: Refined Soybean Oil
Contract: Jan.
Exchange: NCDEX
Expiry: Jan. 18th, 2014
REFINED SOYBEAN OIL (RSBO)
Technical Commentary:

- Candlestick chart pattern indicates sideways to slightly firm tone.
- Prices closed above 18D EMA which support the bulls. While, PVO analysis depicts long build up in the market.
- Oscillator RSI is moving near neutral zone.

The soy oil prices are likely to feature sideways movement.


Strategy: Buy

Intraday Supports & Resistances			S2	S1	PCP	R1	R2
Refined Soy Oil	NCDEX	Jan.	586.50	589.00	596.00	601.00	603.80
Intraday Trade Call			Call	Entry	T1	T2	SL
Refined Soy Oil	NCDEX	Jan.	Buy	Above 594.50	598.00	598.30	593.50

* Do not carry-forward the position next day.

Commodity: Crude Palm Oil
Contract: Jan.
Exchange: MCX
Expiry: Jan 30th, 2014
CRUDE PALM OIL (CPO)
Technical Commentary:

- Candlestick chart pattern reflects range bound movement in the market. However market may consolidate in the near term.
- Prices closed below 18-day SMA which supports the bears. PVO analysis depicts consolidation in the market.
- Oscillator RSI is moving in the neutral zone.

The CPO prices are likely to feature range bound today.


Strategy: Buy

Intraday Supports & Resistances			S2	S1	PCP	R1	R2
Crude Palm Oil	MCX	Jan.	418.00	421.00	427.60	432.00	434.80
Intraday Trade Call			Call	Entry	T1	T2	SL
Crude Palm Oil	MCX	Jan.	Buy	Above 426.50	430.50	431.20	424.10

* Do not carry-forward the position next day.

Disclaimer

The information and opinions contained in the document have been compiled from sources believed to be reliable. The company does not warrant its accuracy, completeness and correctness. Use of data and information contained in this report is at your own risk. This document is not, and should not be construed as, an offer to sell or solicitation to buy any commodities. This document may not be reproduced, distributed or published, in whole or in part, by any recipient hereof for any purpose without prior permission from the Company. IASL and its affiliates and/or their officers, directors and employees may have positions in any commodities mentioned in this document (or in any related investment) and may from time to time add to or dispose of any such commodities (or investment). Please see the detailed disclaimer at <http://www.agriwatch.com/Disclaimer.asp>
 © 2014 Indian Agribusiness Systems Pvt Ltd.