

Commodity: Refined Soybean Oil
Contract: Apr.

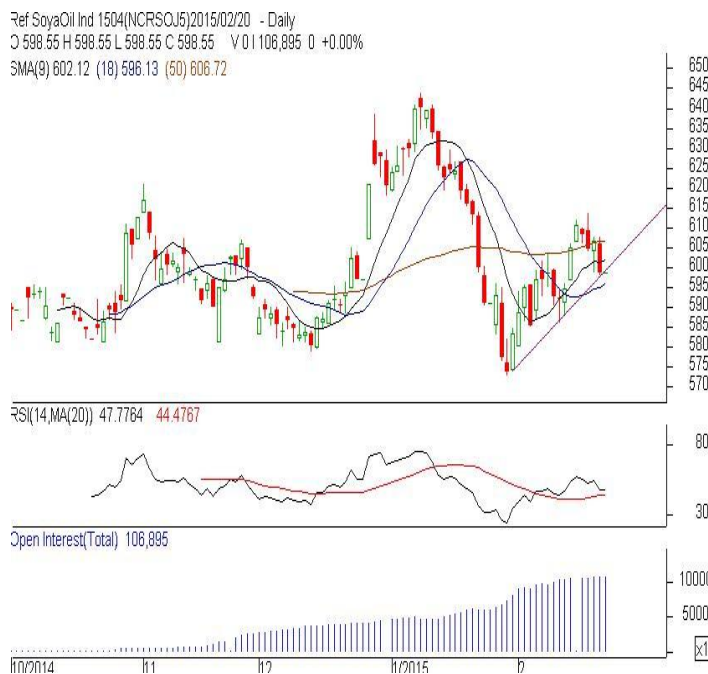
Exchange: NCDEX
Expiry: Apr. 18th, 2015

REFINED SOYBEAN OIL (RSBO)

Technical Commentary:

- Candlestick chart pattern indicates consolidation in the prices.
- Prices closed above 18D EMA which support the bulls. While, PVO analysis depicts long build up in the market.
- Oscillator RSI is moving near neutral zone.

The soy oil prices are likely to feature sideways movement.



Strategy: Sell

Intraday Supports & Resistances			S2	S1	PCP	R1	R2
Refined Soy Oil	NCDEX	Apr.	589.00	592.00	598.55	604.00	608.00
Intraday Trade Call			Call	Entry	T1	T2	SL
Refined Soy Oil	NCDEX	Apr.	Sell	Below 600	595	594	603

* Do not carry-forward the position next day.

Commodity: Crude Palm Oil
Contract: March

Exchange: MCX
Expiry: Mar 30th, 2015

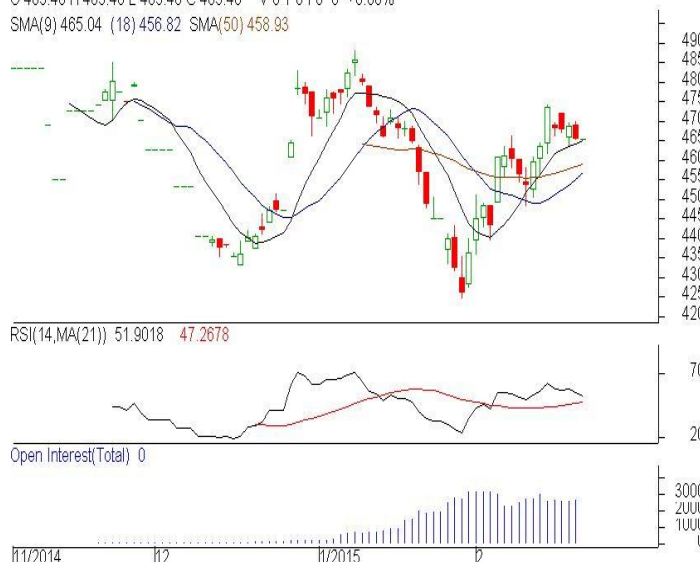
CRUDE PALM OIL (CPO)

Technical Commentary:

- Candlestick chart pattern reflects consolidation in the market.
- Prices closed above 18-day SMA which supports the bulls. PVO analysis depicts consolidation in the market.
- Oscillator RSI is moving in the neutral zone.

The CPO prices are likely to feature range bound today.

CPO-MCX 1503(MXCPOH5)2015/02/20 - Daily
O 465.40 H 465.40 L 465.40 C 465.40 V 0 T 0 I 0 0 +0.00%
SMA(9) 465.04 (18) 456.82 SMA(50) 458.93



Strategy: Sell

Intraday Supports & Resistances			S2	S1	PCP	R1	R2
Crude Palm Oil	MCX	Feb.	455.00	458.00	465.40	472.00	475.00
Intraday Trade Call			Call	Entry	T1	T2	SL
Crude Palm Oil	MCX	Feb.	Sell	Below 463.50	458.00	457.00	466.80

* Do not carry-forward the position next day.

Disclaimer

The information and opinions contained in the document have been compiled from sources believed to be reliable. The company does not warrant its accuracy, completeness and correctness. Use of data and information contained in this report is at your own risk. This document is not, and should not be construed as, an offer to sell or solicitation to buy any commodities. This document may not be reproduced, distributed or published, in whole or in part, by any recipient hereof for any purpose without prior permission from the Company. IASL and its affiliates and/or their officers, directors and employees may have positions in any commodities mentioned in this document (or in any related investment) and may from time to time add to or dispose of any such commodities (or investment). Please see the detailed disclaimer at <http://www.agriwatch.com/Disclaimer.asp>
© 2015 Indian Agribusiness Systems Pvt Ltd.