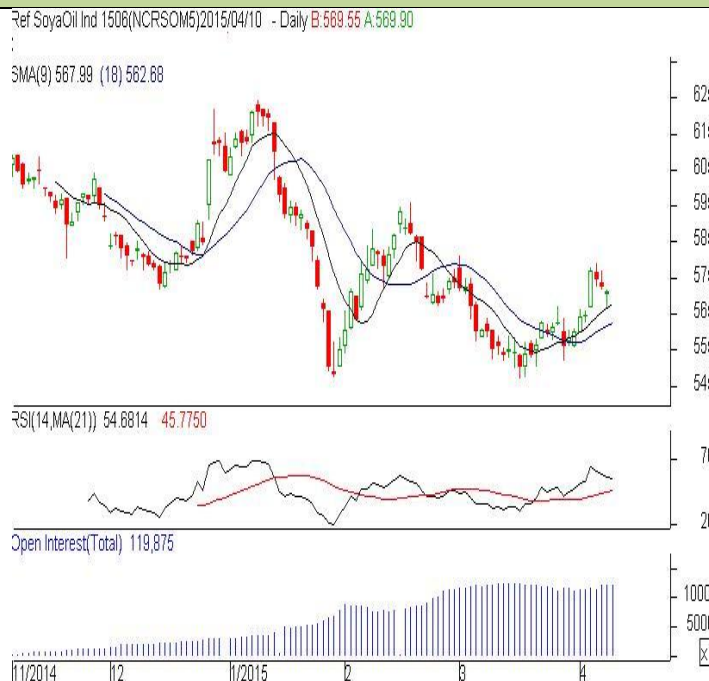


CICommodity: Refined Soybean Oil
Contract: June
Exchange: NCDEX
Expiry: Jun. 18th, 2015
REFINED SOYBEAN OIL (RSBO)
Technical Commentary:

- Candlestick chart pattern indicates consolidation in the prices.
- Prices closed above 18D EMA which support the bulls. While, PVO analysis depicts consolidation in the market.
- Oscillator RSI is moving near neutral zone.

The soy oil prices are likely to feature sideways movement.


Strategy: Sell

Intraday Supports & Resistances			S2	S1	PCP	R1	R2
Refined Soy Oil	NCDEX	June	561.00	564.00	571.00	578.00	581.00
Intraday Trade Call			Call	Entry	T1	T2	SL
Refined Soy Oil	NCDEX	June	Sell	Below 573	568	567	576

* Do not carry-forward the position next day.

Commodity: Crude Palm Oil
Contract: May
Exchange: MCX
Expiry: May 30th, 2015
CRUDE PALM OIL (CPO)
Technical Commentary:

- Candlestick chart pattern reflects consolidation in the market.
- Prices closed below 18-day SMA which supports the bears. PVO analysis depicts consolidation in the market.
- Oscillator RSI is moving in the neutral zone.

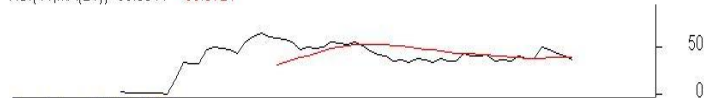
The CPO prices are likely to feature range bound today.

CPO-MCX 1505(MXCPOK5)2015/04/10 - Daily B:431.60 A:432.00

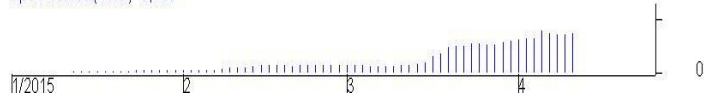
SMA(9) 438.71 (18) 440.35 SMA(50) 453.01



RSI(14,MA(21)) 35.9944 38.9721



Open Interest(Total) 3,638


Strategy: Sell

Intraday Supports & Resistances			S2	S1	PCP	R1	R2
Crude Palm Oil	MCX	May	424.00	427.00	436.90	443.00	446.00
Intraday Trade Call			Call	Entry	T1	T2	SL
Crude Palm Oil	MCX	May	Sell	Below 436	432	431	438.40

* Do not carry-forward the position next day.

Disclaimer

The information and opinions contained in the document have been compiled from sources believed to be reliable. The company does not warrant its accuracy, completeness and correctness. Use of data and information contained in this report is at your own risk. This document is not, and should not be construed as, an offer to sell or solicitation to buy any commodities. This document may not be reproduced, distributed or published, in whole or in part, by any recipient hereof for any purpose without prior permission from the Company. IASL and its affiliates and/or their officers, directors and employees may have positions in any commodities mentioned in this document (or in any related investment) and may from time to time add to or dispose of any such commodities (or investment). Please see the detailed disclaimer at <http://www.agriwatch.com/Disclaimer.asp>
 © 2015 Indian Agribusiness Systems Pvt Ltd.