

Commodity: Refined Soybean Oil
Contract: Aug.

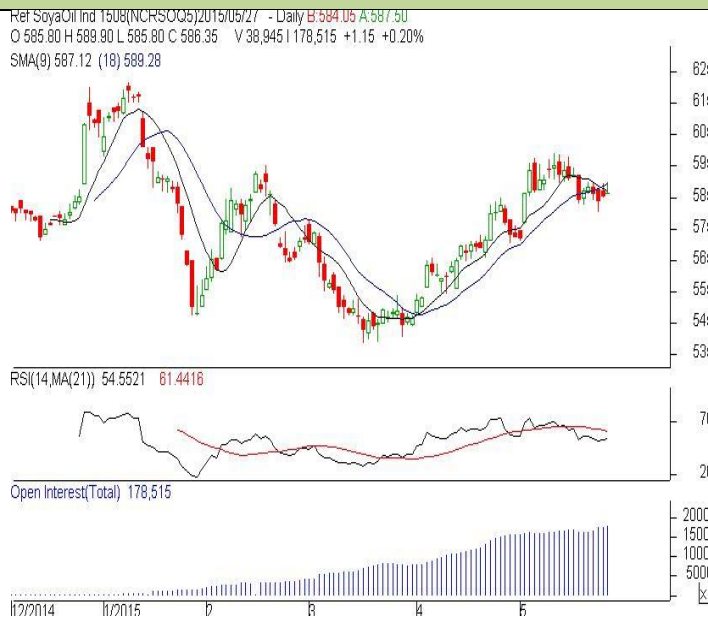
Exchange: NCDEX
Expiry: Aug. 18th, 2015

REFINED SOYBEAN OIL (RSBO)

Technical Commentary:

- Prices and O.I are rising while volume surges up for the day.
- Prices closed slightly below 18D EMA which support the bears. While, PVO analysis depicts consolidation in the market.
- Oscillator RSI is moving near neutral zone.

The soy oil prices are likely to feature slight gain today.



Strategy: Buy

Intraday Supports & Resistances			S2	S1	PCP	R1	R2
Refined Soy Oil	NCDEX	Aug	580.00	583.00	586.30	594.00	597.00
Intraday Trade Call			Call	Entry	T1	T2	SL
Refined Soy Oil	NCDEX	Aug	Buy	Above 587	590	591	585.20

* Do not carry-forward the position next day.

Commodity: Crude Palm Oil
Contract: June
Exchange: MCX
Expiry: June 30th, 2015
CRUDE PALM OIL (CPO)
Technical Commentary:

- Prices featured consolidation while O.I fell down for the day
- Prices closed above 18-day SMA which supports the bulls. PVO analysis depicts consolidation in the market.
- Oscillator RSI is moving in the neutral zone.

The CPO prices are likely to feature gain today.

CPO-MCX 1506(MXCPOM5)2015/05/27 - Daily B:442.50 A:451.50
 O 449.00 H 451.30 L 447.70 C 449.60 ↑ V 1,164 T 523,151 I 6,155 +2.5 +0.56%
 SMA(9) 447.11 (18) 448.99 SMA(50) 444.04


Strategy: Buy

Intraday Supports & Resistances			S2	S1	PCP	R1	R2
Crude Palm Oil	MCX	Jun	439.00	442.00	449.60	456	459
Intraday Trade Call			Call	Entry	T1	T2	SL
Crude Palm Oil	MCX	Jun	BUY	Above 449.50	453	454	447.40

* Do not carry-forward the position next day.

Disclaimer

The information and opinions contained in the document have been compiled from sources believed to be reliable. The company does not warrant its accuracy, completeness and correctness. Use of data and information contained in this report is at your own risk. This document is not, and should not be construed as, an offer to sell or solicitation to buy any commodities. This document may not be reproduced, distributed or published, in whole or in part, by any recipient hereof for any purpose without prior permission from the Company. IASL and its affiliates and/or their officers, directors and employees may have positions in any commodities mentioned in this document (or in any related investment) and may from time to time add to or dispose of any such commodities (or investment). Please see the detailed disclaimer at <http://www.agriwatch.com/Disclaimer.asp>
 © 2015 Indian Agribusiness Systems Pvt Ltd.