

Commodity: Refined Soybean Oil  
NCDEX  
Contract: August.

Exchange:

Expiry: Aug. 20<sup>th</sup>, 2015

### REFINED SOYBEAN OIL (RSBO)

#### Technical Commentary:

- Soybean oil price closed flat on strong selling at higher levels. Continued selling can be seen around these levels.
- Prices are below 9 day EMA and 18 day EMA which implies prices are bearish trend.
- Oscillator like RSI, MACD and Stochastic are around oversold zone and is not going up which indicate neutral trend.

*The soy oil prices are likely to continue losses today.*



#### Strategy: Sell

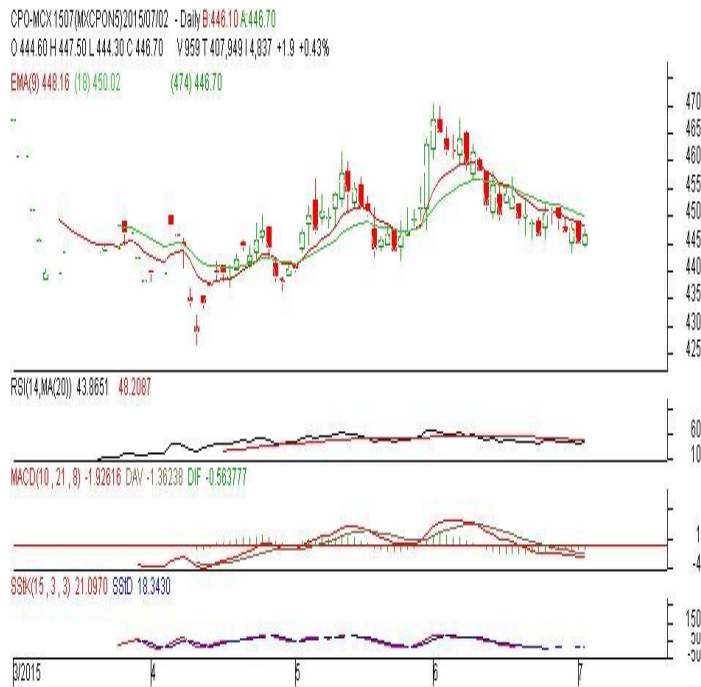
Intraday Supports & Resistances			S2	S1	PCP	R1	R2
Refined Soy Oil	NCDEX	Aug	572	575	584.95	599	603
Intraday Trade Call			Call	Entry	T1	T2	SL
Refined Soy Oil	NCDEX	Aug	<b>Sell</b>	Below 586	581	579	489

\* Do not carry-forward the position next day.

**Commodity: Crude Palm Oil**  
**Contract: July**
**Exchange: MCX**  
**Expiry: July 30<sup>th</sup>, 2015**
**CRUDE PALM OIL (CPO)**
**Technical Commentary:**

- Crude palm oil July contract recovered from lower levels on Thursday. Strong selling at higher levels is keeping the downtrend intact.
- Prices closed below 9-day and 18-day EMA which indicates bearishness.
- Oscillator RSI, MACD and Stochastic are in oversold zone and is going down indicating bearishness.

*The CPO prices are likely to feature loss today.*


**Strategy: Sell**

Intraday Supports & Resistances			S2	S1	PCP	R1	R2
Crude Palm Oil	MCX	July	435	438	446.7	456	461
Intraday Trade Call			Call	Entry	T1	T2	SL
Crude Palm Oil	MCX	July	<b>Sell</b>	Below 448	444	442	450.4

\* Do not carry-forward the position next day.

**Disclaimer**

The information and opinions contained in the document have been compiled from sources believed to be reliable. The company does not warrant its accuracy, completeness and correctness. Use of data and information contained in this report is at your own risk. This document is not, and should not be construed as, an offer to sell or solicitation to buy any commodities. This document may not be reproduced, distributed or published, in whole or in part, by any recipient hereof for any purpose without prior permission from the Company. IASL and its affiliates and/or their officers, directors and employees may have positions in any commodities mentioned in this document (or in any related investment) and may from time to time add to or dispose of any such commodities (or investment). Please see the detailed disclaimer at <http://www.agriwatch.com/Disclaimer.asp>  
 © 2015 Indian Agribusiness Systems Pvt Ltd.