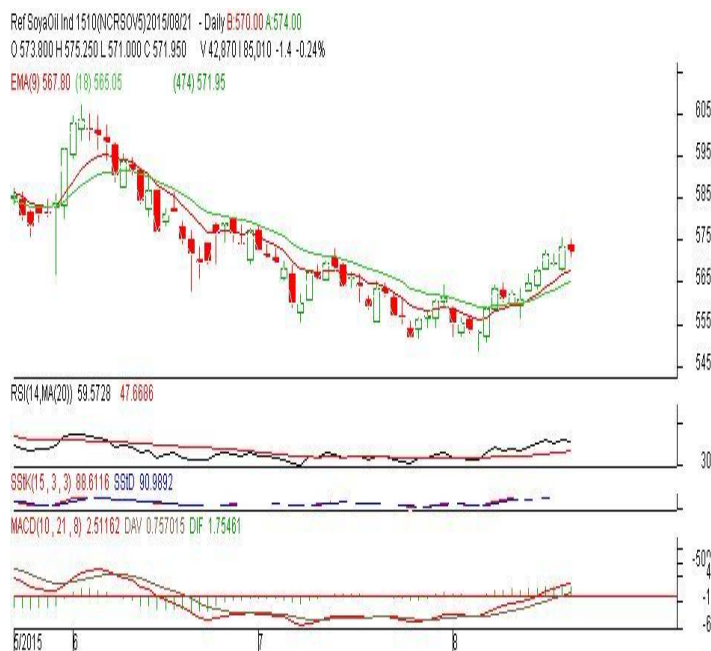


**Commodity: Refined Soybean Oil**  
**Contract: October.**
**Exchange: NCDEX**  
**Expiry: Oct. 20<sup>th</sup>, 2015**
**REFINED SOYBEAN OIL (RSBO)**
**Technical Commentary:**

- Soybean oil price prices fell on Friday bringing halt to the momentum in prices. Candle stick pattern made on Friday indicate that the prices are expected go down due to profit booking
- Prices are above 9 day EMA and 18 day EMA which implies prices in bullish tone.
- Oscillator like RSI, MACD and Stochastic are going up indicating uptrend in the market.

*The soy oil prices are likely to feature losses today.*


**Strategy: Sell**

Intraday Supports & Resistances			S2	S1	PCP	R1	R2
Refined Soy Oil	NCDEX	Oct	540	551	571.95	580	599
Intraday Trade Call			Call	Entry	T1	T2	SL
Refined Soy Oil	NCDEX	Oct	<b>Sell</b>	Below 572	567	565	575

\* Do not carry-forward the position next day.

Commodity: Crude Palm Oil  
Contract: August

Exchange: MCX  
Expiry: August 30<sup>th</sup>, 2015

### CRUDE PALM OIL (CPO)

#### Technical Commentary:

- Crude palm oil August contract witnessed continued selling lower levels. The candle made on Friday indicates continuation of downtrend.
- Prices closed below 9-day and 18-day EMA which indicates bearish trend.
- Oscillator RSI, MACD and Stochastic are going down indicating bearishness in the prices.

*The CPO prices are likely to feature losses today.*



#### Strategy: Sell

Intraday Supports & Resistances			S2	S1	PCP	R1	R2
Crude Palm Oil	MCX	Aug	366	372	380	414	427
Intraday Trade Call			Call	Entry	T1	T2	SL
Crude Palm Oil	MCX	Aug	Sell	Below 380	375	373	383

\* Do not carry-forward the position next day.

#### Disclaimer

The information and opinions contained in the document have been compiled from sources believed to be reliable. The company does not warrant its accuracy, completeness and correctness. Use of data and information contained in this report is at your own risk. This document is not, and should not be construed as, an offer to sell or solicitation to buy any commodities. This document may not be reproduced, distributed or published, in whole or in part, by any recipient hereof for any purpose without prior permission from the Company. IASL and its affiliates and/or their officers, directors and employees may have positions in any commodities mentioned in this document (or in any related investment) and may from time to time add to or dispose of any such commodities (or investment). Please see the detailed disclaimer at <http://www.agriwatch.com/Disclaimer.asp>  
© 2015 Indian Agribusiness Systems Pvt Ltd.