

Commodity: Refined Soybean Oil
Contract: October.

Exchange: NCDEX
Expiry: Oct. 20th, 2015

REFINED SOYBEAN OIL (RSBO)

Technical Commentary:

- Soybean oil price prices fell on Wednesday. Candlestick made on Wednesday indicates downtrend in prices.
- Prices are below 9 day EMA and 18 day EMA which implies prices in bearish tone.
- Oscillator like RSI, MACD and Stochastic are moving down indicating downtrend in the prices.

The soy oil prices are likely to feature losses today.



Strategy: Sell

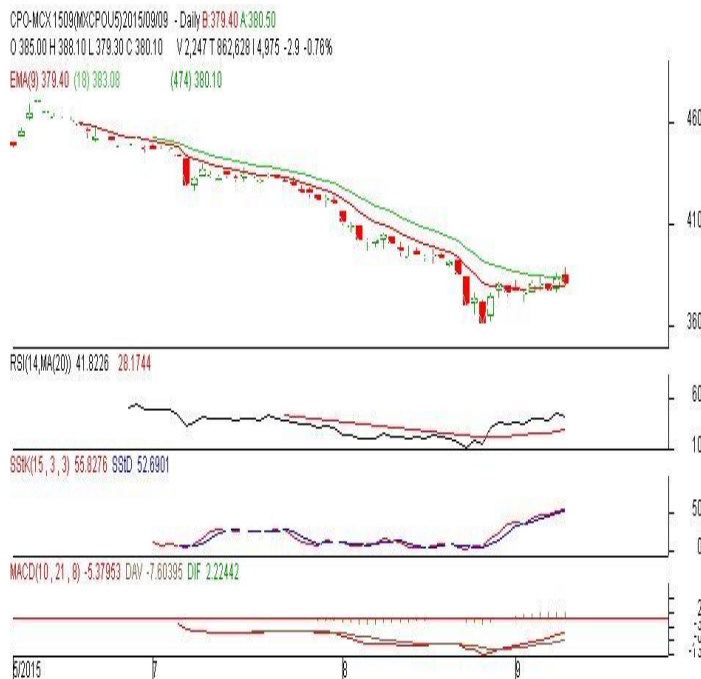
Intraday Supports & Resistances			S2	S1	PCP	R1	R2
Refined Soy Oil	NCDEX	Oct	540	551	560.15	580	599
Intraday Trade Call			Call	Entry	T1	T2	SL
Refined Soy Oil	NCDEX	Oct	Sell	Below 561	556	555	564

* Do not carry-forward the position next day.

Commodity: Crude Palm Oil
Contract: September
Exchange: MCX
Expiry: September 30th, 2015
CRUDE PALM OIL (CPO)
Technical Commentary:

- Crude palm oil September contract fell on selling at higher levels. The candle made on Wednesday indicates consolidation current levels. Prices are consolidating at present levels and any breakout will be confirmation of trend.
- Prices closed around 9-day and 18-day EMA which indicates neutral trend.
- Oscillator RSI, MACD and Stochastic are going up indicating uptrend in the prices.

The CPO prices are likely to feature gains today.


Strategy: Buy

Intraday Supports & Resistances			S2	S1	PCP	R1	R2
Crude Palm Oil	MCX	Sep.	340	354	380.1	414	427
Intraday Trade Call			Call	Entry	T1	T2	SL
Crude Palm Oil	MCX	Sep.	Buy	Above 379	383	385	377.4

* Do not carry-forward the position next day.

Disclaimer

The information and opinions contained in the document have been compiled from sources believed to be reliable. The company does not warrant its accuracy, completeness and correctness. Use of data and information contained in this report is at your own risk. This document is not, and should not be construed as, an offer to sell or solicitation to buy any commodities. This document may not be reproduced, distributed or published, in whole or in part, by any recipient hereof for any purpose without prior permission from the Company. IASL and its affiliates and/or their officers, directors and employees may have positions in any commodities mentioned in this document (or in any related investment) and may from time to time add to or dispose of any such commodities (or investment). Please see the detailed disclaimer at <http://www.agriwatch.com/Disclaimer.asp>
 © 2015 Indian Agribusiness Systems Pvt Ltd.