

Commodity: Refined Soybean Oil
Contract: October.
Exchange: NCDEX
Expiry: Oct. 20th, 2015
REFINED SOYBEAN OIL (RSBO)
Technical Commentary:

- Soybean oil prices traded sideways on Monday. Candlestick made on Monday indicates consolidation in prices.
- Prices are around 9 day EMA and 18 day EMA which implies prices in neutral tone.
- Oscillator like RSI, MACD and Stochastic are mixed indicating neutral trend in the prices.

The soy oil prices are likely to feature gains today.


Strategy: Buy

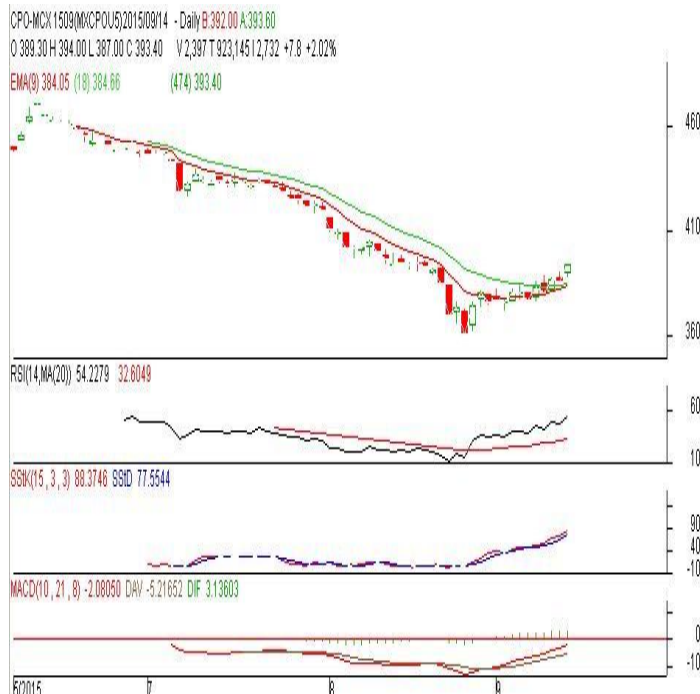
Intraday Supports & Resistances			S2	S1	PCP	R1	R2
Refined Soy Oil	NCDEX	Oct	540	551	565.9	580	599
Intraday Trade Call			Call	Entry	T1	T2	SL
Refined Soy Oil	NCDEX	Oct	Buy	Buy 565	570	571	562

* Do not carry-forward the position next day.

Commodity: Crude Palm Oil
Contract: September
Exchange: MCX
Expiry: September 30th, 2015
CRUDE PALM OIL (CPO)
Technical Commentary:

- Crude palm oil September contract rose heavy technical buying at higher levels. The candle made on Monday indicates further uptrend in prices.
- Prices closed above 9-day and 18-day EMA which indicates bullish trend.
- Oscillator RSI, MACD and Stochastic are going up indicating uptrend in the prices.

The CPO prices are likely to feature gains today.


Strategy: Buy

Intraday Supports & Resistances			S2	S1	PCP	R1	R2
Crude Palm Oil	MCX	Sep.	340	354	393.4	414	427
Intraday Trade Call			Call	Entry	T1	T2	SL
Crude Palm Oil	MCX	Sep.	Buy	Above 393	397	398	390.6

* Do not carry-forward the position next day.

Disclaimer

The information and opinions contained in the document have been compiled from sources believed to be reliable. The company does not warrant its accuracy, completeness and correctness. Use of data and information contained in this report is at your own risk. This document is not, and should not be construed as, an offer to sell or solicitation to buy any commodities. This document may not be reproduced, distributed or published, in whole or in part, by any recipient hereof for any purpose without prior permission from the Company. IASL and its affiliates and/or their officers, directors and employees may have positions in any commodities mentioned in this document (or in any related investment) and may from time to time add to or dispose of any such commodities (or investment). Please see the detailed disclaimer at <http://www.agriwatch.com/Disclaimer.asp>
 © 2015 Indian Agribusiness Systems Pvt Ltd.