

Commodity: Refined Soybean Oil  
Contract: October.

Exchange: NCDEX  
Expiry: Oct. 20<sup>th</sup>, 2015

### REFINED SOYBEAN OIL (RSBO)

#### Technical Commentary:

- Soybean oil prices rose on Friday. Candlestick made on Friday indicates consolidation in prices.
- Prices are around 9 day EMA and 18 day EMA which implies prices in neutral tone.
- Oscillator like RSI, MACD and Stochastic are mixed indicating sideways trend in the prices.

*The soy oil prices are likely to feature losses today.*



#### Strategy: Sell

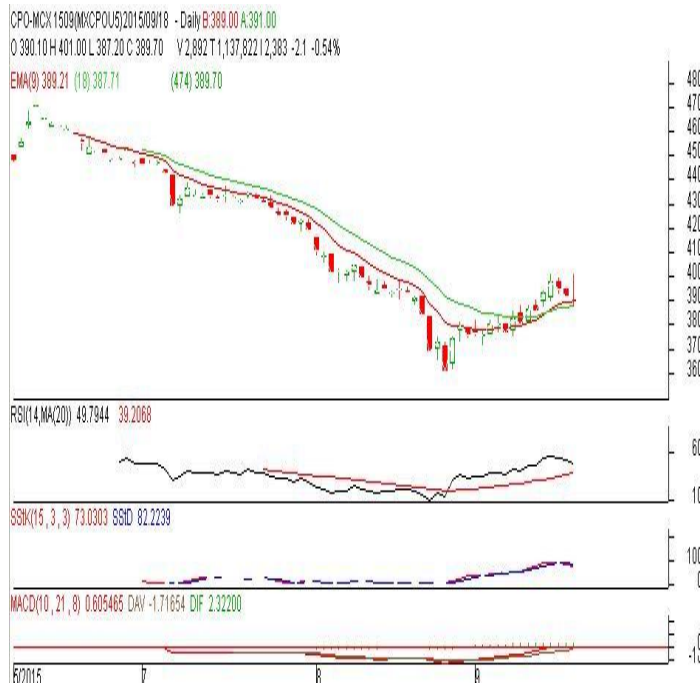
Intraday Supports & Resistances			S2	S1	PCP	R1	R2
Refined Soy Oil	NCDEX	Oct	540	551	571.75	599	607
Intraday Trade Call			Call	Entry	T1	T2	SL
Refined Soy Oil	NCDEX	Oct	<b>Sell</b>	Below 573	568	566	576

\* Do not carry-forward the position next day.

**Commodity: Crude Palm Oil**  
**Contract: September**
**Exchange: MCX**  
**Expiry: September 30th, 2015**
**CRUDE PALM OIL (CPO)**
**Technical Commentary:**

- Crude palm oil September contract fell on technical selling. The candle made on Friday indicates short term reversal in prices.
- Prices closed around 9-day and 18-day EMA which indicates neutral trend in prices.
- Oscillator RSI, MACD and Stochastic are going down indicating downtrend in the prices.

*The CPO prices are likely to feature losses today.*


**Strategy: Sell**

Intraday Supports & Resistances			S2	S1	PCP	R1	R2
Crude Palm Oil	MCX	Sep.	340	354	389.7	414	427
Intraday Trade Call			Call	Entry	T1	T2	SL
Crude Palm Oil	MCX	Sep.	<b>Sell</b>	Below 392	388	387	394.4

\* Do not carry-forward the position next day.

**Disclaimer**

The information and opinions contained in the document have been compiled from sources believed to be reliable. The company does not warrant its accuracy, completeness and correctness. Use of data and information contained in this report is at your own risk. This document is not, and should not be construed as, an offer to sell or solicitation to buy any commodities. This document may not be reproduced, distributed or published, in whole or in part, by any recipient hereof for any purpose without prior permission from the Company. IASL and its affiliates and/or their officers, directors and employees may have positions in any commodities mentioned in this document (or in any related investment) and may from time to time add to or dispose of any such commodities (or investment). Please see the detailed disclaimer at <http://www.agriwatch.com/Disclaimer.asp>  
 © 2015 Indian Agribusiness Systems Pvt Ltd.