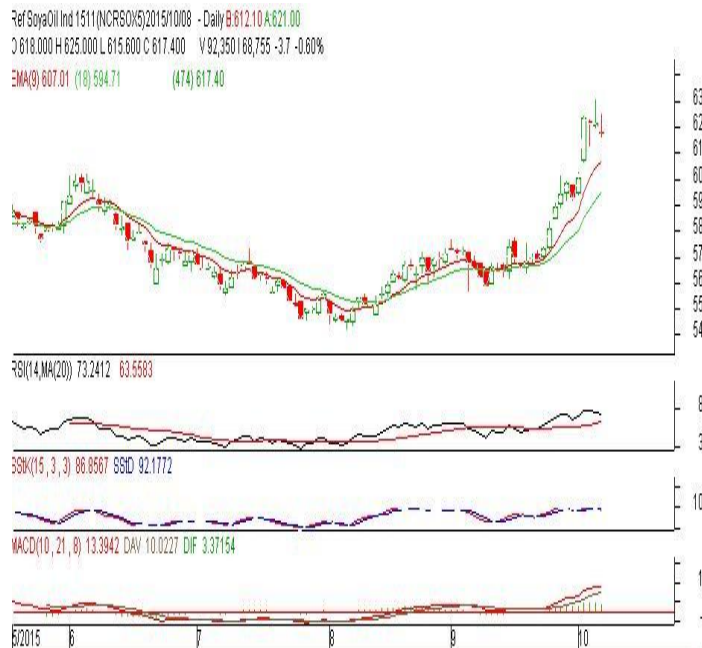


Commodity: Refined Soybean Oil
Contract: November
Exchange: NCDEX
Expiry: Nov. 20th, 2015
REFINED SOYBEAN OIL (RSBO)
Technical Commentary:

- Soybean oil prices traded lower on Thursday. Candlestick made on Thursday indicates prices could fall on technical selling at higher levels.
- Prices are above 9 day EMA and 18 day EMA which implies prices in bullish tone.
- Oscillator like RSI, MACD and Stochastic are in overbought zone moving downwards indicating downtrend in the prices.

The soy oil prices are likely to feature losses today.


Strategy: Sell

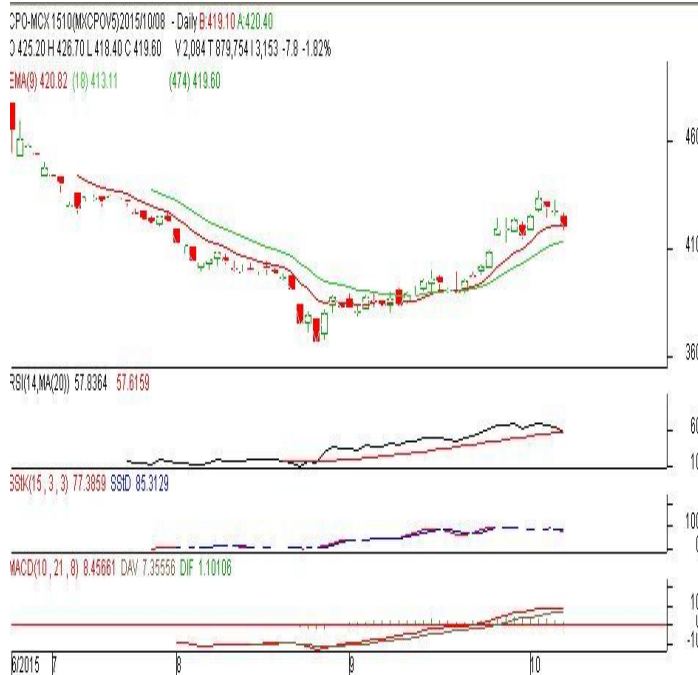
Intraday Supports & Resistances			S2	S1	PCP	R1	R2
Refined Soy Oil	NCDEX	Nov	599	607	617.4	640	655
Intraday Trade Call			Call	Entry	T1	T2	SL
Refined Soy Oil	NCDEX	Nov	Sell	Below 619	614	612	622

* Do not carry-forward the position next day.

Commodity: Crude Palm Oil
Contract: October
Exchange: MCX
Expiry: October 30th, 2015
CRUDE PALM OIL (CPO)
Technical Commentary:

- Crude palm oil October contract fell on retracement from higher levels. The candle made on Thursday indicates retracement of prices.
- Prices closed above 9-day and 18-day EMA which indicates bullish trend in prices.
- Oscillator RSI, MACD and Stochastic are going down indicating downtrend in the prices.

The CPO prices are likely to feature losses today.


Strategy: Sell

Intraday Supports & Resistances			S2	S1	PCP	R1	R2
Crude Palm Oil	MCX	Oct.	351	380	419.6	441	447
Intraday Trade Call			Call	Entry	T1	T2	SL
Crude Palm Oil	MCX	Oct.	Sell	Below 420	415	414	423

* Do not carry-forward the position next day.

Disclaimer

The information and opinions contained in the document have been compiled from sources believed to be reliable. The company does not warrant its accuracy, completeness and correctness. Use of data and information contained in this report is at your own risk. This document is not, and should not be construed as, an offer to sell or solicitation to buy any commodities. This document may not be reproduced, distributed or published, in whole or in part, by any recipient hereof for any purpose without prior permission from the Company. IASL and its affiliates and/or their officers, directors and employees may have positions in any commodities mentioned in this document (or in any related investment) and may from time to time add to or dispose of any such commodities (or investment). Please see the detailed disclaimer at <http://www.agriwatch.com/Disclaimer.asp>
 © 2015 Indian Agribusiness Systems Pvt Ltd.