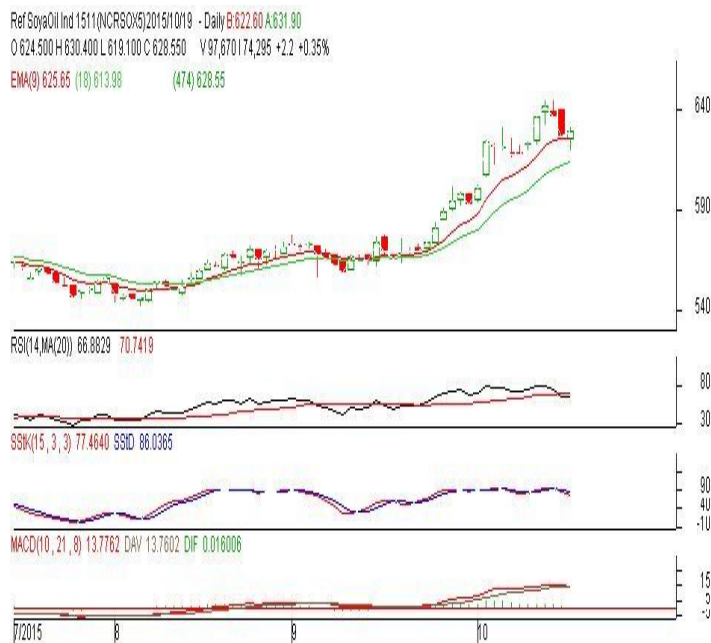


**Commodity: Refined Soybean Oil**  
**Contract: November**
**Exchange: NCDEX**  
**Expiry: Nov. 20<sup>th</sup>, 2015**
**REFINED SOYBEAN OIL (RSBO)**
**Technical Commentary:**

- Soybean oil prices traded lower on Monday. Candlestick made on Monday indicates prices could rise on technical buying.
- Prices are around 9 day EMA and 18 day EMA which implies prices in neutral tone.
- Oscillator like RSI, MACD and Stochastic are moving down indicating down trend in the prices.

*The soy oil prices are likely to feature losses today.*


**Strategy: Sell**

Intraday Supports & Resistances			S2	S1	PCP	R1	R2
Refined Soy Oil	NCDEX	Nov	599	607	628.55	655	680
Intraday Trade Call			Call	Entry	T1	T2	SL
Refined Soy Oil	NCDEX	Nov	<b>Sell</b>	Below 630	625	624	633

\* Do not carry-forward the position next day.

**Commodity: Crude Palm Oil**  
**Contract: October**
**Exchange: MCX**  
**Expiry: October 30th, 2015**
**CRUDE PALM OIL (CPO)**
**Technical Commentary:**

- Crude palm oil October contract fell on technical selling. The candle made on Monday indicates selling at these levels.
- Prices closed below 9-day and 18-day EMA which indicates down trend in prices.
- Oscillator RSI, MACD and Stochastic are going down indicating downtrend in the prices.

*The CPO prices are likely to feature losses today.*


**Strategy: Sell**

Intraday Supports & Resistances			S2	S1	PCP	R1	R2
Crude Palm Oil	MCX	Oct.	350	380	412.8	441	447
Intraday Trade Call			Call	Entry	T1	T2	SL
Crude Palm Oil	MCX	Oct.	<b>Sell</b>	Below 415	410	409	418

\* Do not carry-forward the position next day.

**Disclaimer**

The information and opinions contained in the document have been compiled from sources believed to be reliable. The company does not warrant its accuracy, completeness and correctness. Use of data and information contained in this report is at your own risk. This document is not, and should not be construed as, an offer to sell or solicitation to buy any commodities. This document may not be reproduced, distributed or published, in whole or in part, by any recipient hereof for any purpose without prior permission from the Company. IASL and its affiliates and/or their officers, directors and employees may have positions in any commodities mentioned in this document (or in any related investment) and may from time to time add to or dispose of any such commodities (or investment). Please see the detailed disclaimer at <http://www.agriwatch.com/Disclaimer.asp>  
 © 2015 Indian Agribusiness Systems Pvt Ltd.