

Commodity: Refined Soybean Oil
Contract: December

Exchange: NCDEX
Expiry: Dec. 20th, 2015

REFINED SOYBEAN OIL (RSBO)

Technical Commentary:

- Soybean oil prices traded higher on Wednesday. Candlestick made on Wednesday indicates downtrend in prices and could fall on technical selling at higher levels.
- Prices are below 9 day EMA and 18 day EMA which implies bearish tone.
- Oscillator like RSI, MACD and Stochastic are mixed indicating neutral prices.

The soy oil prices are likely to feature losses today.



Strategy: Sell

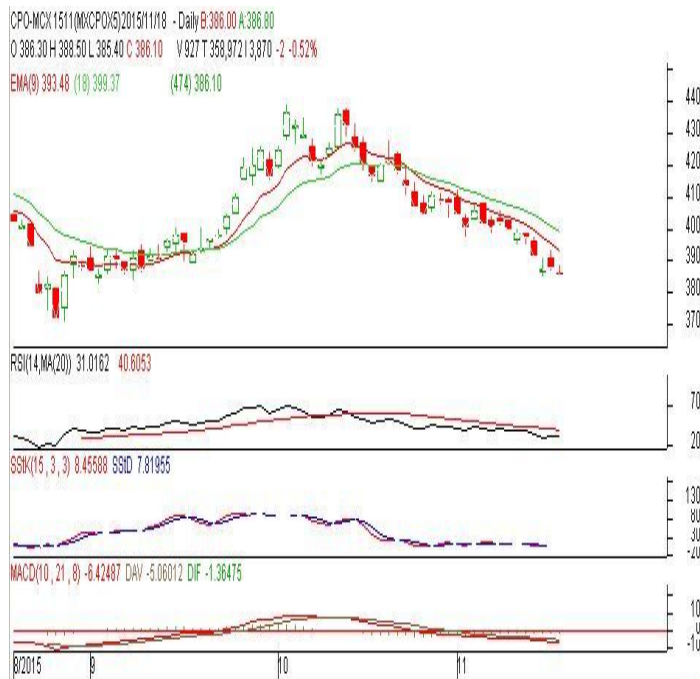
Intraday Supports & Resistances			S2	S1	PCP	R1	R2
Refined Soy Oil	NCDEX	Dec	565	580	606.4	631	655
Intraday Trade Call			Call	Entry	T1	T2	SL
Refined Soy Oil	NCDEX	Dec	Sell	Below 608	603	602	611

* Do not carry-forward the position next day.

Commodity: Crude Palm Oil
Contract: November
Exchange: MCX
Expiry: November 30th, 2015
CRUDE PALM OIL (CPO)
Technical Commentary:

- Crude palm oil November contract fell on technical selling. The candle made on Tuesday indicates prices are on down trend.
- Prices closed below 9-day and 18-day EMA which indicates down trend in prices.
- Oscillator RSI, MACD and Stochastic are going down indicating downtrend in prices.

The CPO prices are likely to feature losses today.


Strategy: Sell

Intraday Supports & Resistances			S2	S1	PCP	R1	R2
Crude Palm Oil	MCX	Nov.	350	380	386.1	414	427
Intraday Trade Call			Call	Entry	T1	T2	SL
Crude Palm Oil	MCX	Nov.	Sell	Below 387	382	381	390

* Do not carry-forward the position next day.

Disclaimer

The information and opinions contained in the document have been compiled from sources believed to be reliable. The company does not warrant its accuracy, completeness and correctness. Use of data and information contained in this report is at your own risk. This document is not, and should not be construed as, an offer to sell or solicitation to buy any commodities. This document may not be reproduced, distributed or published, in whole or in part, by any recipient hereof for any purpose without prior permission from the Company. IASL and its affiliates and/or their officers, directors and employees may have positions in any commodities mentioned in this document (or in any related investment) and may from time to time add to or dispose of any such commodities (or investment). Please see the detailed disclaimer at <http://www.agriwatch.com/Disclaimer.asp>
 © 2015 Indian Agribusiness Systems Pvt Ltd.