

Commodity: Refined Soybean Oil  
Contract: December

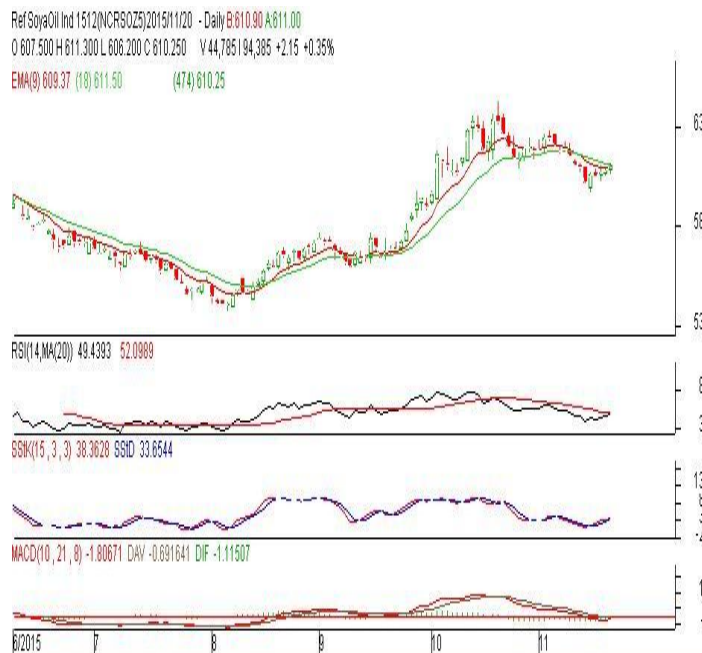
Exchange: NCDEX  
Expiry: Dec. 20<sup>th</sup>, 2015

### REFINED SOYBEAN OIL (RSBO)

#### Technical Commentary:

- Soybean oil prices traded higher on Friday. Candlestick made on Friday indicates uptrend in prices.
- Prices are around 9 day EMA and 18 day EMA which implies neutral tone.
- Oscillator like RSI, MACD and Stochastic are rising indicating uptrend prices.

*The soy oil prices are likely to feature gains today.*



#### Strategy: Buy

Intraday Supports & Resistances			S2	S1	PCP	R1	R2
Refined Soy Oil	NCDEX	Dec	565	580	610.25	631	655
Intraday Trade Call			Call	Entry	T1	T2	SL
Refined Soy Oil	NCDEX	Dec	Buy	Below 609	614	616	606

\* Do not carry-forward the position next day.

**Commodity: Crude Palm Oil**  
**Contract: December**
**Exchange: MCX**  
**Expiry: December 30th, 2015**
**CRUDE PALM OIL (CPO)**
**Technical Commentary:**

- Crude palm oil December contract was unchanged on Friday. The candle made on Friday indicates prices are on short term uptrend. Prices could find support from lower levels.
- Prices closed below 9-day and 18-day EMA which indicates down trend in prices.
- Oscillator RSI, MACD and Stochastic are going down indicating downtrend in prices.

*The CPO prices are likely to feature gains today.*


**Strategy: Buy**

Intraday Supports & Resistances			S2	S1	PCP	R1	R2
Crude Palm Oil	MCX	Dec.	350	380	393.2	414	427
Intraday Trade Call			Call	Entry	T1	T2	SL
Crude Palm Oil	MCX	Dec.	Buy	Below 392	396	397	389.6

\* Do not carry-forward the position next day.

**Disclaimer**

The information and opinions contained in the document have been compiled from sources believed to be reliable. The company does not warrant its accuracy, completeness and correctness. Use of data and information contained in this report is at your own risk. This document is not, and should not be construed as, an offer to sell or solicitation to buy any commodities. This document may not be reproduced, distributed or published, in whole or in part, by any recipient hereof for any purpose without prior permission from the Company. IASL and its affiliates and/or their officers, directors and employees may have positions in any commodities mentioned in this document (or in any related investment) and may from time to time add to or dispose of any such commodities (or investment). Please see the detailed disclaimer at <http://www.agriwatch.com/Disclaimer.asp>  
 © 2015 Indian Agribusiness Systems Pvt Ltd.