

Commodity: Refined Soybean Oil
Contract: December

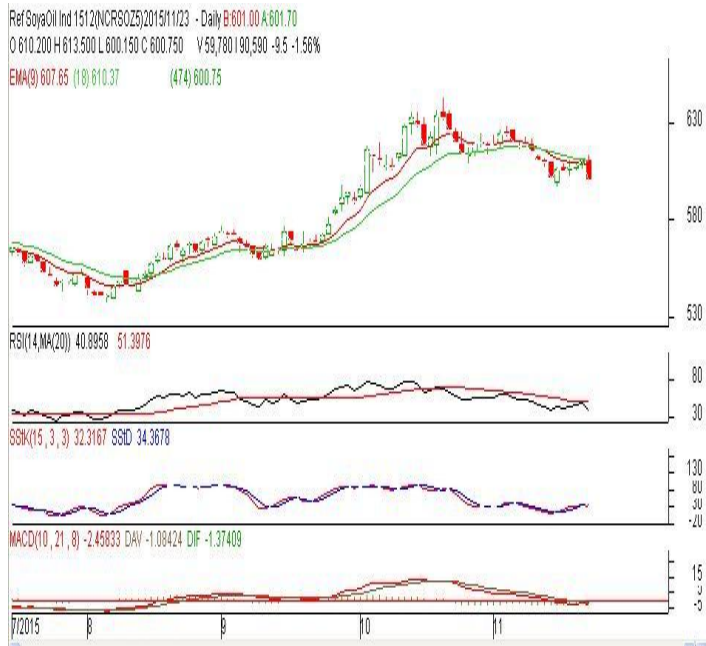
Exchange: NCDEX
Expiry: Dec. 20th, 2015

REFINED SOYBEAN OIL (RSBO)

Technical Commentary:

- Soybean oil prices traded lower on Monday. Candlestick made on Monday indicates downtrend in prices.
- Prices are below 9 day EMA and 18 day EMA which implies bearish tone.
- Oscillator like RSI, MACD and Stochastic are falling indicating downtrend prices.

The soy oil prices are likely to feature losses today.



Strategy: Sell

Intraday Supports & Resistances			S2	S1	PCP	R1	R2
Refined Soy Oil	NCDEX	Dec	565	580	600.75	631	655
Intraday Trade Call			Call	Entry	T1	T2	SL
Refined Soy Oil	NCDEX	Dec	Sell	Below 602	597	595	605

* Do not carry-forward the position next day.

Commodity: Crude Palm Oil
Contract: December
Exchange: MCX
Expiry: December 30th, 2015
CRUDE PALM OIL (CPO)
Technical Commentary:

- Crude palm oil December contract traded lower on Monday. The candle made on Monday indicates prices are on downtrend
- Prices closed below 9-day and 18-day EMA which indicates down trend in prices.
- Oscillator RSI, MACD and Stochastic are going down indicating downtrend in prices.

The CPO prices are likely to feature losses today.


Strategy: Sell

Intraday Supports & Resistances			S2	S1	PCP	R1	R2
Crude Palm Oil	MCX	Dec.	350	380	386.2	414	427
Intraday Trade Call			Call	Entry	T1	T2	SL
Crude Palm Oil	MCX	Dec.	Sell	Below 389	384	383	392

* Do not carry-forward the position next day.

Disclaimer

The information and opinions contained in the document have been compiled from sources believed to be reliable. The company does not warrant its accuracy, completeness and correctness. Use of data and information contained in this report is at your own risk. This document is not, and should not be construed as, an offer to sell or solicitation to buy any commodities. This document may not be reproduced, distributed or published, in whole or in part, by any recipient hereof for any purpose without prior permission from the Company. IASL and its affiliates and/or their officers, directors and employees may have positions in any commodities mentioned in this document (or in any related investment) and may from time to time add to or dispose of any such commodities (or investment). Please see the detailed disclaimer at <http://www.agriwatch.com/Disclaimer.asp>
 © 2015 Indian Agribusiness Systems Pvt Ltd.