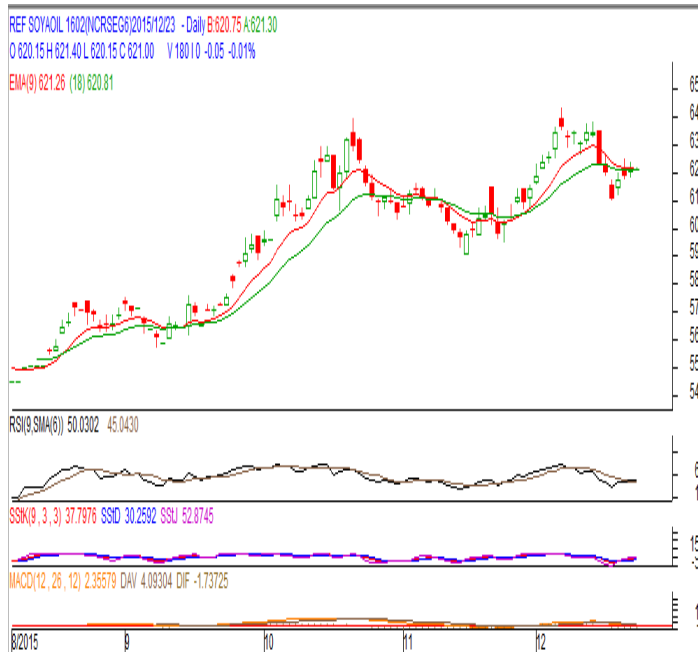


**Commodity: Refined Soybean Oil**  
**Contract: January**
**Exchange: NCDEX**  
**Expiry: Jan. 20<sup>th</sup>, 2016**
**REFINED SOYBEAN OIL (RSBO)**
**Technical Commentary:**

- Soybean oil prices traded higher Tuesday. Candlestick made on Tuesday indicates prices could rise on technical buying at these levels.
- Prices are around 9 day EMA and 18 day EMA which implies indecisiveness in prices.
- Oscillator like RSI, MACD and Stochastic are going up indicating uptrend in prices.

*The soy oil prices are likely to feature gains today.*


**Strategy: Buy**

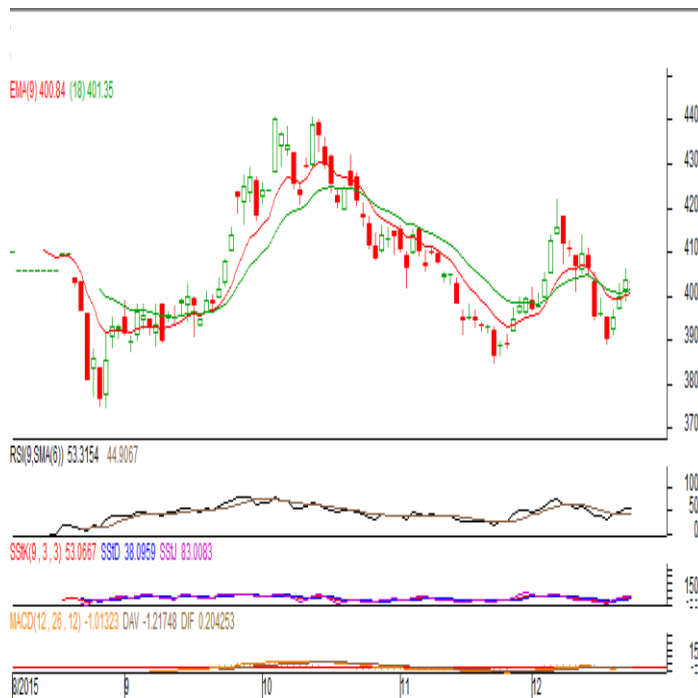
Intraday Supports & Resistances			S2	S1	PCP	R1	R2
Refined Soy Oil	NCDEX	Jan	580	599	621.05	643	655
Intraday Trade Call			Call	Entry	T1	T2	SL
Refined Soy Oil	NCDEX	Jan	Buy	Above 619	624	626	616

\* Do not carry-forward the position next day.

**Commodity: Crude Palm Oil**  
**Contract: December**
**Exchange: MCX**  
**Expiry: Dec. 30th, 2015**
**CRUDE PALM OIL (CPO)**
**Technical Commentary:**

- Crude palm oil December contract traded higher on technical buying on Tuesday. The candle made on Tuesday indicates uptrend in prices.
- Prices closed above 9-day and 18-day EMA which indicates uptrend in prices.
- Oscillator RSI, MACD and Stochastic are going up indicating uptrend in prices.

*The CPO prices are likely to feature gains today.*


**Strategy: Buy**

Intraday Supports & Resistances			S2	S1	PCP	R1	R2
Crude Palm Oil	MCX	Dec.	350	380	403.6	414	427
Intraday Trade Call			Call	Entry	T1	T2	SL
Crude Palm Oil	MCX	Dec.	Buy	Above 402	406	408	399.6

\* Do not carry-forward the position next day.

**Disclaimer**

The information and opinions contained in the document have been compiled from sources believed to be reliable. The company does not warrant its accuracy, completeness and correctness. Use of data and information contained in this report is at your own risk. This document is not, and should not be construed as, an offer to sell or solicitation to buy any commodities. This document may not be reproduced, distributed or published, in whole or in part, by any recipient hereof for any purpose without prior permission from the Company. IASL and its affiliates and/or their officers, directors and employees may have positions in any commodities mentioned in this document (or in any related investment) and may from time to time add to or dispose of any such commodities (or investment). Please see the detailed disclaimer at <http://www.agriwatch.com/Disclaimer.asp>  
 © 2015 Indian Agribusiness Systems Pvt Ltd.