

Commodity: Refined Soybean Oil
Contract: March

Exchange: NCDEX
Expiry: Mar. 20th, 2016

REFINED SOYBEAN OIL (RSBO)

Technical Commentary:

- Soybean oil prices traded higher on Thursday. Candlestick made on Thursday indicates prices could rise on technical buying at these levels.
- Prices are above 9 day EMA and 18 day EMA which implies uptrend in prices.
- Oscillator like RSI, MACD and Stochastic are going up indicating uptrend in prices.

The soy oil prices are likely to feature gains today.



Strategy: Buy

Intraday Supports & Resistances			S2	S1	PCP	R1	R2
Refined Soy Oil	NCDEX	Mar	580	599	618.1	639	655
Intraday Trade Call			Call	Entry	T1	T2	SL
Refined Soy Oil	NCDEX	Mar	Buy	Above 618	623	625	615

* Do not carry-forward the position next day.

Commodity: Crude Palm Oil
Contract: February

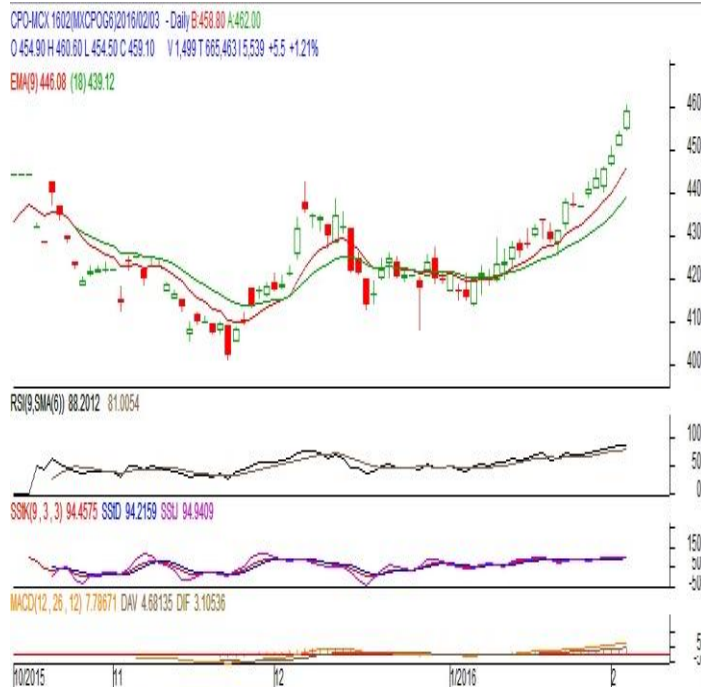
Exchange: MCX
Expiry: Feb. 29th 2016

CRUDE PALM OIL (CPO)

Technical Commentary:

- Crude palm oil February contract traded higher on Thursday. The candle made Thursday indicates uptrend in prices.
- Prices closed above 9-day and 18-day EMA which indicates uptrend in prices.
- Oscillator RSI, MACD and Stochastic are going up indicating uptrend in prices.

The CPO prices are likely to feature gains today.



Strategy: Buy

Intraday Supports & Resistances			S2	S1	PCP	R1	R2
Crude Palm Oil	MCX	Feb.	441	447	460.3	470	485
Intraday Trade Call			Call	Entry	T1	T2	SL
Crude Palm Oil	MCX	Feb.	Buy	Above 460	464	466	457.6

* Do not carry-forward the position next day.

Disclaimer

The information and opinions contained in the document have been compiled from sources believed to be reliable. The company does not warrant its accuracy, completeness and correctness. Use of data and information contained in this report is at your own risk. This document is not, and should not be construed as, an offer to sell or solicitation to buy any commodities. This document may not be reproduced, distributed or published, in whole or in part, by any recipient hereof for any purpose without prior permission from the Company. IASL and its affiliates and/or their officers, directors and employees may have positions in any commodities mentioned in this document (or in any related investment) and may from time to time add to or dispose of any such commodities (or investment). Please see the detailed disclaimer at <http://www.agriwatch.com/Disclaimer.asp>
© 2016 Indian Agribusiness Systems Pvt Ltd.