

Commodity: Refined Soybean Oil
Contract: March
Exchange: NCDEX
Expiry: Mar. 20th, 2016
REFINED SOYBEAN OIL (RSBO)
Technical Commentary:

- Soybean oil prices traded higher on Friday. Candlestick made on Friday indicates prices could rise on technical buying at these levels.
- Prices are around 9 day EMA and 18 day EMA which implies indecisiveness in prices.
- Oscillator like RSI, MACD and Stochastic are going up indicating uptrend in prices.

The soy oil prices are likely to feature gains today.


Strategy: Buy

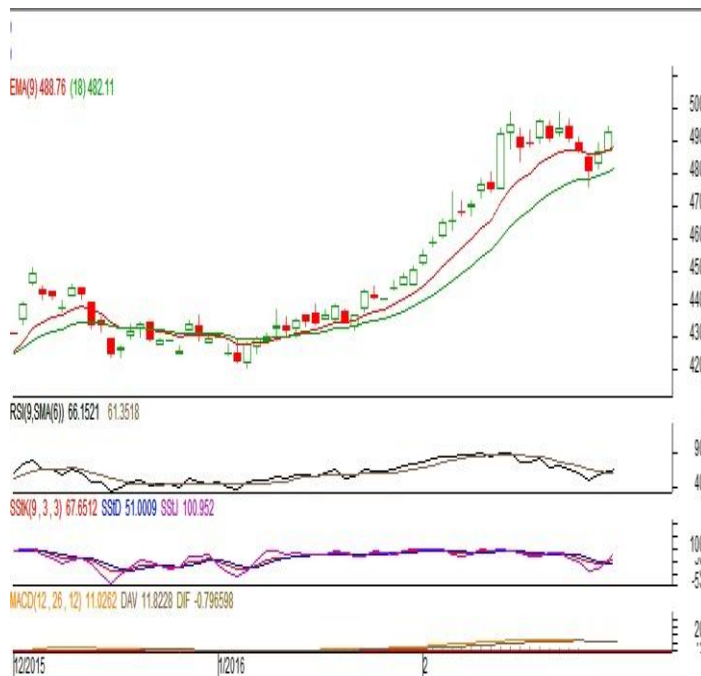
Intraday Supports & Resistances			S2	S1	PCP	R1	R2
Refined Soy Oil	NCDEX	Mar	580	599	622.15	639	655
Intraday Trade Call			Call	Entry	T1	T2	SL
Refined Soy Oil	NCDEX	Mar	Buy	Above 621	626	628	618

* Do not carry-forward the position next day.

Commodity: Crude Palm Oil
Contract: March
Exchange: MCX
Expiry: Mar. 31st 2016
CRUDE PALM OIL (CPO)
Technical Commentary:

- Crude palm oil March contract traded higher on Friday. The candle made on Friday indicates prices will rise on technical buying these levels.
- Prices closed above 9-day and 18-day EMA which indicates uptrend in prices.
- Oscillator RSI, MACD and Stochastic are in are going up indicating downtrend in prices.

The CPO prices are likely to feature gains today.


Strategy: Buy

Intraday Supports & Resistances			S2	S1	PCP	R1	R2
Crude Palm Oil	MCX	Mar.	447	465	492.8	500	515
Intraday Trade Call			Call	Entry	T1	T2	SL
Crude Palm Oil	MCX	Mar.	Buy	Above 492	496	498	489.6

* Do not carry-forward the position next day.

Disclaimer

The information and opinions contained in the document have been compiled from sources believed to be reliable. The company does not warrant its accuracy, completeness and correctness. Use of data and information contained in this report is at your own risk. This document is not, and should not be construed as, an offer to sell or solicitation to buy any commodities. This document may not be reproduced, distributed or published, in whole or in part, by any recipient hereof for any purpose without prior permission from the Company. IASL and its affiliates and/or their officers, directors and employees may have positions in any commodities mentioned in this document (or in any related investment) and may from time to time add to or dispose of any such commodities (or investment). Please see the detailed disclaimer at <http://www.agriwatch.com/Disclaimer.asp>
 © 2016 Indian Agribusiness Systems Pvt Ltd.