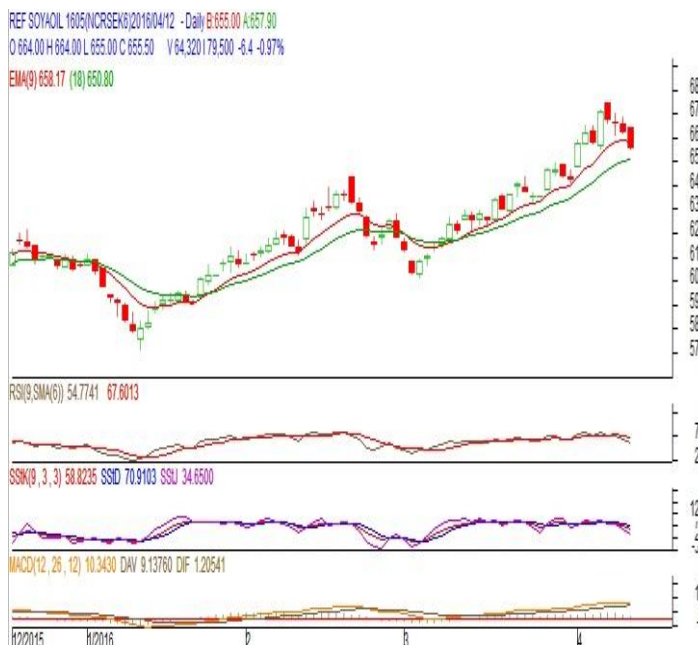


Commodity: Refined Soybean Oil
Contract: May
Exchange: NCDEX
Expiry: May. 20th, 2016
REFINED SOYBEAN OIL (RSBO)
Technical Commentary:

- Soybean oil prices traded lower on Tuesday. Candlestick made on Tuesday indicates prices could rise on technical buying at lower levels.
- Prices are above 9 day EMA and 18 day EMA which implies uptrend in prices.
- Oscillator like RSI, MACD and Stochastic are mixed indicating indecisiveness in prices.

The soy oil prices are likely to feature gains today.


Strategy: Buy

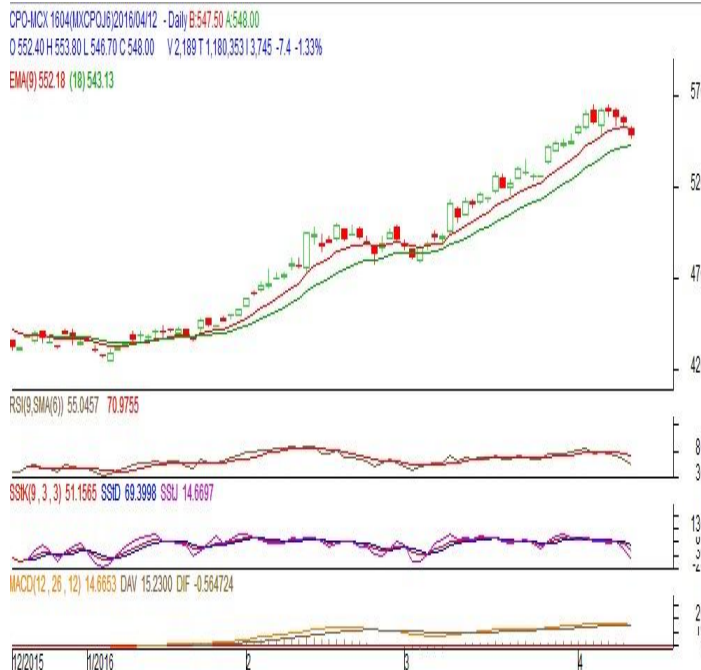
Intraday Supports & Resistances			S2	S1	PCP	R1	R2
Refined Soy Oil	NCDEX	May	627	643	655.5	675	685
Intraday Trade Call			Call	Entry	T1	T2	SL
Refined Soy Oil	NCDEX	May	Buy	Above 654	659	661	651

* Do not carry-forward the position next day.

Commodity: Crude Palm Oil
Contract: April
Exchange: MCX
Expiry: Apr. 29th 2016
CRUDE PALM OIL (CPO)
Technical Commentary:

- Crude palm oil April contract traded lower on Tuesday. The candle made on Tuesday indicates prices will fall on technical selling at these levels.
- Prices closed around 9-day and 18-day EMA which sideways trend in prices.
- Oscillator RSI, MACD and Stochastic are coming down indicating downtrend in prices.

The CPO prices are likely to feature losses today.


Strategy: Sell

Intraday Supports & Resistances			S2	S1	PCP	R1	R2
Crude Palm Oil	MCX	Apr.	515	534	548	575	600
Intraday Trade Call			Call	Entry	T1	T2	SL
Crude Palm Oil	MCX	Apr.	Sell	Below 549	544	542	552

* Do not carry-forward the position next day.

Disclaimer

The information and opinions contained in the document have been compiled from sources believed to be reliable. The company does not warrant its accuracy, completeness and correctness. Use of data and information contained in this report is at your own risk. This document is not, and should not be construed as, an offer to sell or solicitation to buy any commodities. This document may not be reproduced, distributed or published, in whole or in part, by any recipient hereof for any purpose without prior permission from the Company. IASL and its affiliates and/or their officers, directors and employees may have positions in any commodities mentioned in this document (or in any related investment) and may from time to time add to or dispose of any such commodities (or investment). Please see the detailed disclaimer at <http://www.agriwatch.com/Disclaimer.asp>
 © 2016 Indian Agribusiness Systems Pvt Ltd.