

Commodity: Refined Soybean Oil  
Contract: June

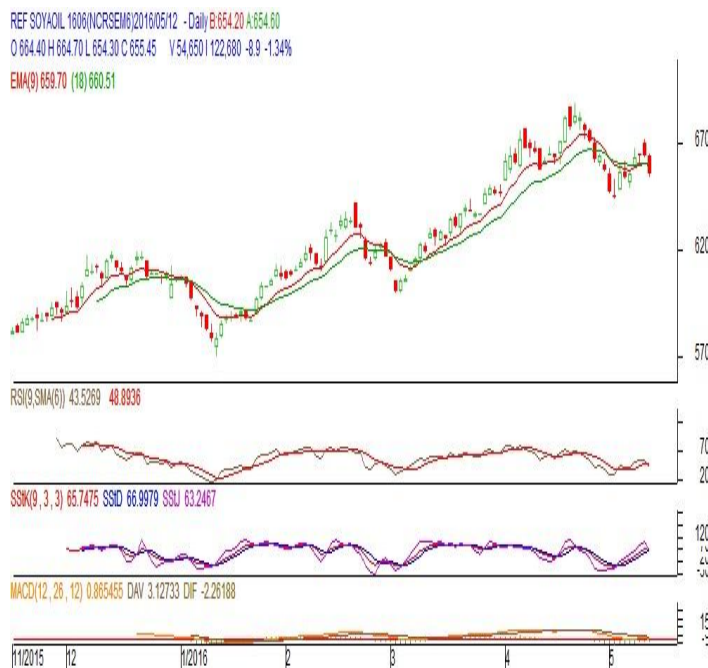
Exchange: NCDEX  
Expiry: June. 20<sup>th</sup>, 2016

### REFINED SOYBEAN OIL (RSBO)

#### Technical Commentary:

- Soybean oil prices traded lower on Thursday. Candlestick made on Thursday indicates prices could fall on technical selling at these levels.
- Prices are below 9 day EMA and 18 day EMA which implies downtrend in prices.
- Oscillator like RSI, MACD and Stochastic are going down indicating uptrend in prices.

*The soy oil prices are likely to feature losses today.*



#### Strategy: Sell

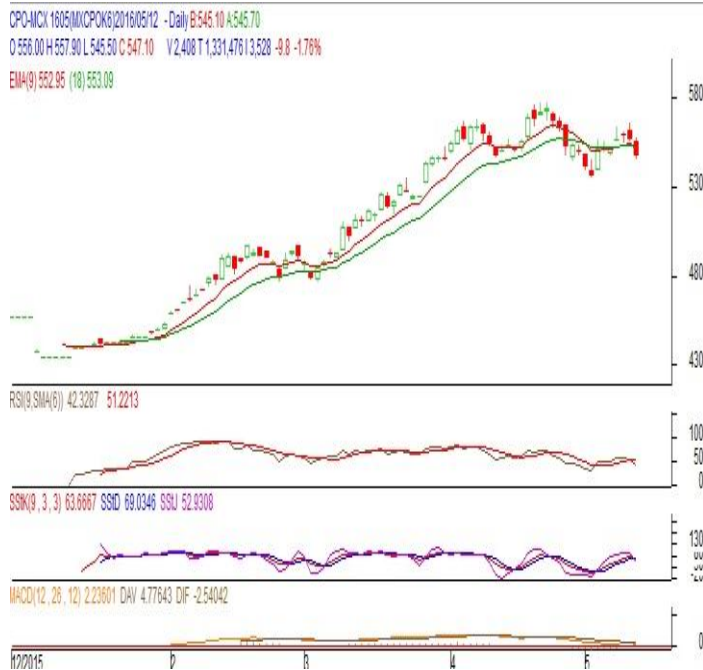
Intraday Supports & Resistances			S2	S1	PCP	R1	R2
Refined Soy Oil	NCDEX	June	636	643	655.45	677	690
Intraday Trade Call			Call	Entry	T1	T2	SL
Refined Soy Oil	NCDEX	June	<b>Sell</b>	Below 656	651	649	659

\* Do not carry-forward the position next day.

**Commodity: Crude Palm Oil**  
**Contract: May**
**Exchange: MCX**  
**Expiry: May. 31<sup>st</sup> 2016**
**CRUDE PALM OIL (CPO)**
**Technical Commentary:**

- Crude palm oil May contract traded lower on Thursday. The candle made on Thursday indicates prices will fall on technical selling at these levels.
- Prices closed below 9-day and 18-day EMA which indicate downtrend in prices.
- Oscillator RSI, MACD and Stochastic are going moving down indicating downtrend in prices.

*The CPO prices are likely to feature losses today.*


**Strategy: Sell**

Intraday Supports & Resistances			S2	S1	PCP	R1	R2
Crude Palm Oil	MCX	May	527	534	547.1	568	577
Intraday Trade Call			Call	Entry	T1	T2	SL
Crude Palm Oil	MCX	May	<b>Sell</b>	Below 548	543	541	551

\* Do not carry-forward the position next day.

**Disclaimer**

The information and opinions contained in the document have been compiled from sources believed to be reliable. The company does not warrant its accuracy, completeness and correctness. Use of data and information contained in this report is at your own risk. This document is not, and should not be construed as, an offer to sell or solicitation to buy any commodities. This document may not be reproduced, distributed or published, in whole or in part, by any recipient hereof for any purpose without prior permission from the Company. IASL and its affiliates and/or their officers, directors and employees may have positions in any commodities mentioned in this document (or in any related investment) and may from time to time add to or dispose of any such commodities (or investment). Please see the detailed disclaimer at <http://www.agriwatch.com/Disclaimer.asp>  
 © 2016 Indian Agribusiness Systems Pvt Ltd.