

Commodity: Refined Soybean Oil
Contract: June
Exchange: NCDEX
Expiry: June.20th, 2016
REFINED SOYBEAN OIL (RSBO)
Technical Commentary:

- Soy oil prices traded higher on Tuesday. Candlestick made on Tuesday indicates prices could rise on technical buying at these levels.
- Prices are around 9 day EMA and 18 day EMA which implies indecisiveness in prices.
- Oscillator like RSI, MACD and Stochastic are going up indicating uptrend in prices.

The soy oil prices are likely to feature gains today.

REF SOYAOIL 1606(NORSEM6)20160531 - Daily B:649.30 A:649.35
 O:648.00 H:649.70 L:645.30 C:649.40 V:30190174.350 +1.55 +0.24%
 EMA(9):645.98 (18):648.45


Strategy: Buy

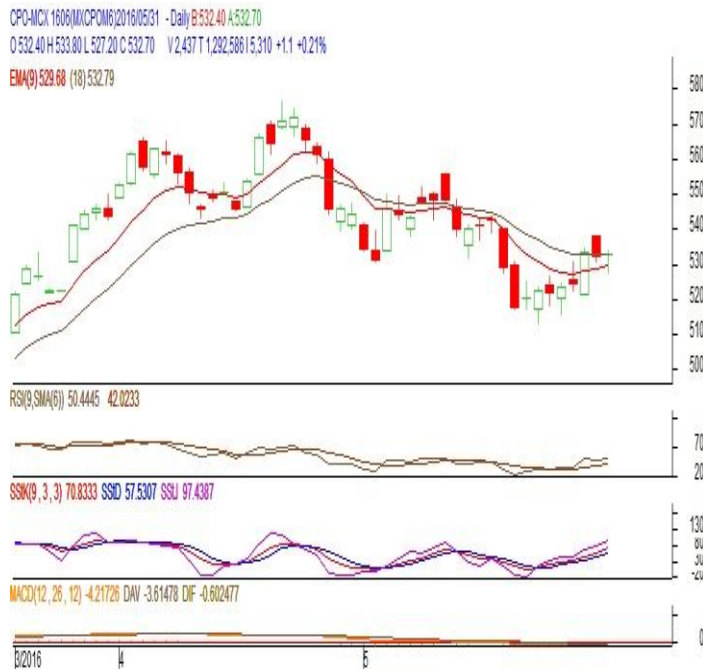
| Intraday Supports & Resistances | | | S2 | S1 | PCP | R1 | R2 |
|---------------------------------|-------|------|------|-----------|-------|-----|-----|
| Refined Soy Oil | NCDEX | June | 627 | 631 | 649.4 | 666 | 672 |
| Intraday Trade Call | | | Call | Entry | T1 | T2 | SL |
| Refined Soy Oil | NCDEX | June | Buy | Above 648 | 653 | 655 | 645 |

* Do not carry-forward the position next day.

Commodity: Crude Palm Oil
Contract: June
Exchange: MCX
Expiry: June. 30th 2016
CRUDE PALM OIL (CPO)
Technical Commentary:

- Crude palm oil June contract traded higher on Tuesday. Candlestick made on Tuesday indicates prices could rise on technical buying at these levels.
- Prices are around 9 day EMA and 18 day EMA which implies indecisiveness in prices.
- Oscillator like RSI, MACD and Stochastic are going up indicating uptrend in prices.

The CPO prices are likely to feature gains today.


Strategy: Buy

| Intraday Supports & Resistances | | | S2 | S1 | PCP | R1 | R2 |
|---------------------------------|-----|------|------|-----------|-------|-----|-----|
| Crude Palm Oil | MCX | June | 497 | 514 | 532.7 | 539 | 547 |
| Intraday Trade Call | | | Call | Entry | T1 | T2 | SL |
| Crude Palm Oil | MCX | June | Buy | Above 531 | 536 | 538 | 528 |

* Do not carry-forward the position next day.

Disclaimer

The information and opinions contained in the document have been compiled from sources believed to be reliable. The company does not warrant its accuracy, completeness and correctness. Use of data and information contained in this report is at your own risk. This document is not, and should not be construed as, an offer to sell or solicitation to buy any commodities. This document may not be reproduced, distributed or published, in whole or in part, by any recipient hereof for any purpose without prior permission from the Company. IASL and its affiliates and/or their officers, directors and employees may have positions in any commodities mentioned in this document (or in any related investment) and may from time to time add to or dispose of any such commodities (or investment). Please see the detailed disclaimer at <http://www.agriwatch.com/Disclaimer.asp>
 © 2016 Indian Agribusiness Systems Pvt Ltd.