

Commodity: Refined Soybean Oil
Contract: July

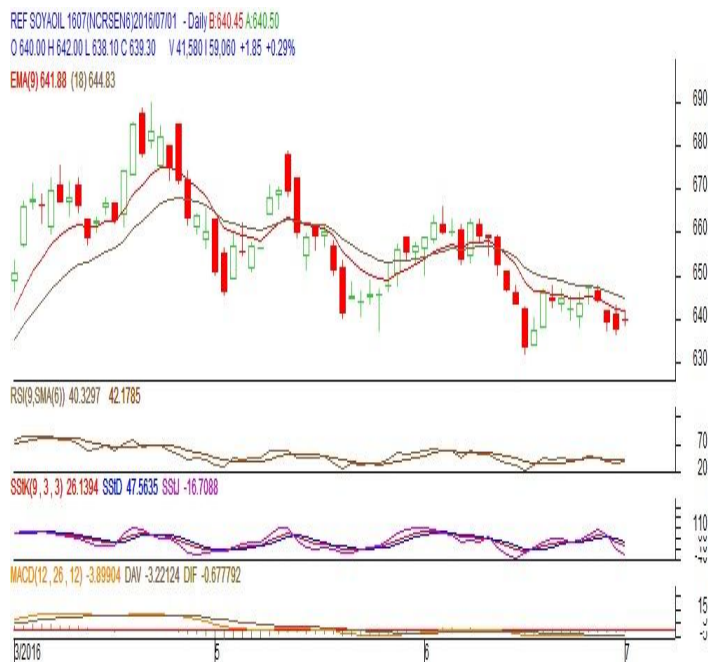
Exchange: NCDEX
Expiry: July.20th, 2016

REFINED SOYBEAN OIL (RSBO)

Technical Commentary:

- Soy oil prices traded higher on Friday. Candlestick made on Friday indicates prices could fall on technical selling at these levels.
- Prices are around 9 day EMA and 18 day EMA which implies indecisiveness in prices.
- Oscillator like RSI, MACD and Stochastic are mixed indicating indecisiveness in prices.

The soy oil prices are likely to feature losses today.



Strategy: Sell

Intraday Supports & Resistances			S2	S1	PCP	R1	R2
Refined Soy Oil	NCDEX	July	626	631	639.3	656	666
Intraday Trade Call			Call	Entry	T1	T2	SL
Refined Soy Oil	NCDEX	July	Sell	Below 641	636	634	644

* Do not carry-forward the position next day.

Commodity: Crude Palm Oil
Contract: July
Exchange: MCX
Expiry: July. 31st 2016
CRUDE PALM OIL (CPO)
Technical Commentary:

- Crude palm oil July contract traded lower on Friday. Candlestick made on Friday indicates prices could fall on technical selling at these levels.
- Prices are below 9 day EMA and 18 day EMA which implies downtrend in prices.
- Oscillator like RSI, MACD and Stochastic are going down indicating downtrend in prices.

The CPO prices are likely to feature losses today.


Strategy: Sell

Intraday Supports & Resistances			S2	S1	PCP	R1	R2
Crude Palm Oil	MCX	July	480	488	501.5	514	527
Intraday Trade Call			Call	Entry	T1	T2	SL
Crude Palm Oil	MCX	July	Sell	Below 503	498	496	506

* Do not carry-forward the position next day.

Disclaimer

The information and opinions contained in the document have been compiled from sources believed to be reliable. The company does not warrant its accuracy, completeness and correctness. Use of data and information contained in this report is at your own risk. This document is not, and should not be construed as, an offer to sell or solicitation to buy any commodities. This document may not be reproduced, distributed or published, in whole or in part, by any recipient hereof for any purpose without prior permission from the Company. IASL and its affiliates and/or their officers, directors and employees may have positions in any commodities mentioned in this document (or in any related investment) and may from time to time add to or dispose of any such commodities (or investment). Please see the detailed disclaimer at <http://www.agriwatch.com/Disclaimer.asp>
 © 2016 Indian Agribusiness Systems Pvt Ltd.