

Commodity: Refined Soybean Oil
Contract: September

Exchange: NCDEX
Expiry: September.20th, 2016

REFINED SOYBEAN OIL (RSBO)

Technical Commentary:

- Soy oil prices traded higher on Thursday. Candlestick made on Thursday indicates prices could rise on technical buying at these levels.
- Prices are below 9 day EMA and 18 day EMA which implies downtrend in prices.
- Oscillator like RSI, MACD and Stochastic are in oversold zone and directing uptrend in prices.

The soy oil prices are likely to feature gains today.



Strategy: Buy

Intraday Supports & Resistances			S2	S1	PCP	R1	R2
Refined Soy Oil	NCDEX	Sep	624	631	640	648	666
Intraday Trade Call			Call	Entry	T1	T2	SL
Refined Soy Oil	NCDEX	Sep	Buy	Above 639	644	646	636

* Do not carry-forward the position next day.

Commodity: Crude Palm Oil
Contract: September

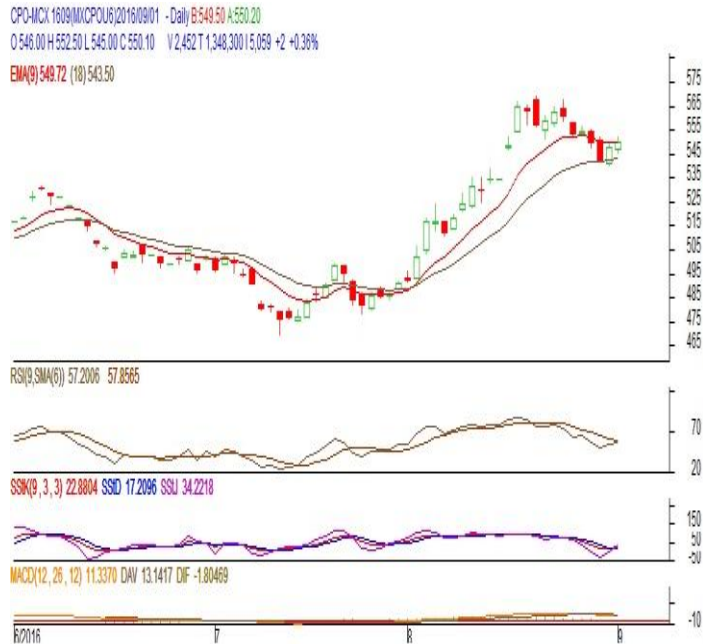
Exchange: MCX
Expiry: September. 30th 2016

CRUDE PALM OIL (CPO)

Technical Commentary:

- Crude palm oil September contract higher on Thursday. Candlestick made on Thursday indicates prices could rise on technical buying at these levels.
- Prices are around 9 day EMA and 18 day EMA which implies indecisiveness in prices.
- Oscillator like RSI, MACD and Stochastic are indicating uptrend in prices.

The CPO prices are likely to feature gains today.



Strategy: Buy

Intraday Supports & Resistances			S2	S1	PCP	R1	R2
Crude Palm Oil	MCX	Sep	525	539	550.1	567	578
Intraday Trade Call			Call	Entry	T1	T2	SL
Crude Palm Oil	MCX	Sep	Buy	Above 549	555	557	546

* Do not carry-forward the position next day.

Disclaimer

The information and opinions contained in the document have been compiled from sources believed to be reliable. The company does not warrant its accuracy, completeness and correctness. Use of data and information contained in this report is at your own risk. This document is not, and should not be construed as, an offer to sell or solicitation to buy any commodities. This document may not be reproduced, distributed or published, in whole or in part, by any recipient hereof for any purpose without prior permission from the Company. IASL and its affiliates and/or their officers, directors and employees may have positions in any commodities mentioned in this document (or in any related investment) and may from time to time add to or dispose of any such commodities (or investment). Please see the detailed disclaimer at <http://www.agriwatch.com/Disclaimer.asp>
© 2016 Indian Agribusiness Systems Pvt Ltd.