

Commodity: Refined Soybean Oil  
Contract: November

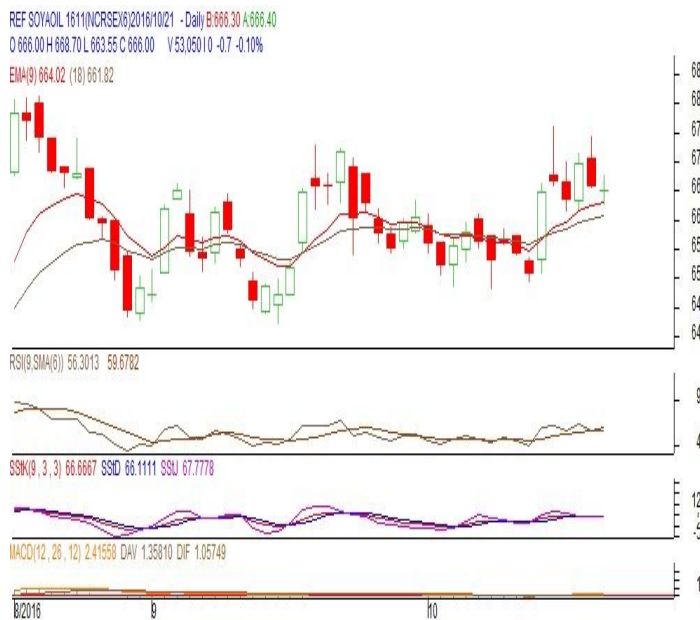
Exchange: NCDEX  
Expiry: November.20<sup>th</sup>, 2016

### REFINED SOYBEAN OIL (RSBO)

#### Technical Commentary:

- Soy oil prices traded lower on Friday. Candlestick made on Friday indicates prices could fall on technical selling at these levels.
- Prices are above 9 day EMA and 18 day EMA which implies uptrend in prices.
- Oscillator like RSI, MACD and Stochastic are indicating upward bias in prices.

*The soy oil prices are likely to feature gains today.*



#### Strategy: Buy

Intraday Supports & Resistances			S2	S1	PCP	R1	R2
Refined Soy Oil	NCDEX	Nov	644	651	666	683	700
Intraday Trade Call			Call	Entry	T1	T2	SL
Refined Soy Oil	NCDEX	Nov	Buy	Above 664	669	671	661

\* Do not carry-forward the position next day.

**Commodity: Crude Palm Oil**  
**Contract: October**
**Exchange: MCX**  
**Expiry: October. 31<sup>st</sup> 2016**
**CRUDE PALM OIL (CPO)**
**Technical Commentary:**

- Crude palm oil October contract closed lower on Friday. Candlestick made on Friday indicates prices could fall on technical selling at these levels.
- Prices are around 9 day EMA and 18 day EMA which implies indecisiveness in prices.
- Oscillator like RSI, MACD and Stochastic are indicating downward bias in prices.

*The CPO prices are likely to feature losses today.*


**Strategy: Sell**

Intraday Supports & Resistances			S2	S1	PCP	R1	R2
Crude Palm Oil	MCX	Oct	514	524	532.4	551	563
Intraday Trade Call			Call	Entry	T1	T2	SL
Crude Palm Oil	MCX	Oct	<b>Sell</b>	Below 534	529	527	537

\* Do not carry-forward the position next day.

**Disclaimer**

The information and opinions contained in the document have been compiled from sources believed to be reliable. The company does not warrant its accuracy, completeness and correctness. Use of data and information contained in this report is at your own risk. This document is not, and should not be construed as, an offer to sell or solicitation to buy any commodities. This document may not be reproduced, distributed or published, in whole or in part, by any recipient hereof for any purpose without prior permission from the Company. IASL and its affiliates and/or their officers, directors and employees may have positions in any commodities mentioned in this document (or in any related investment) and may from time to time add to or dispose of any such commodities (or investment). Please see the detailed disclaimer at <http://www.agriwatch.com/Disclaimer.asp>  
 © 2016 Indian Agribusiness Systems Pvt Ltd.