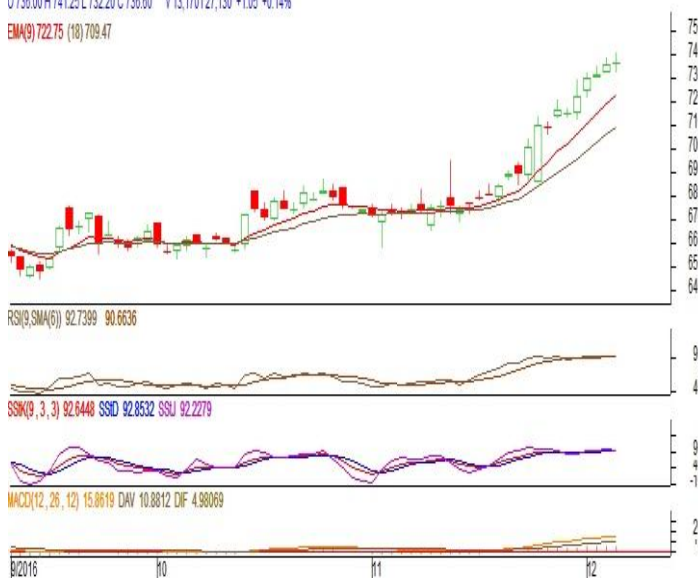


Commodity: Refined Soybean Oil
Contract: December
Exchange: NCDEX
Expiry: December.20th, 2016
REFINED SOYBEAN OIL (RSBO)
Technical Commentary:

- Soy oil prices traded higher on Tuesday. Candlestick made on Tuesday indicates prices could rise on technical buying at these levels.
- Prices are above 9 day EMA and 18 day EMA which implies uptrend in prices.
- Oscillator like RSI, MACD and Stochastic are indicating uptrend in prices.

The soy oil prices are likely to feature gains today.

REF SOYAOIL 1612(NCDEX2016/12/06 - Daily) B:736.50 A:737.45
 O 736.00 H 741.25 L 732.20 C 736.60 V 13.1701 27.130 +1.05 +0.14%
 EMA(9) 722.75 (18) 709.47


Strategy: Buy

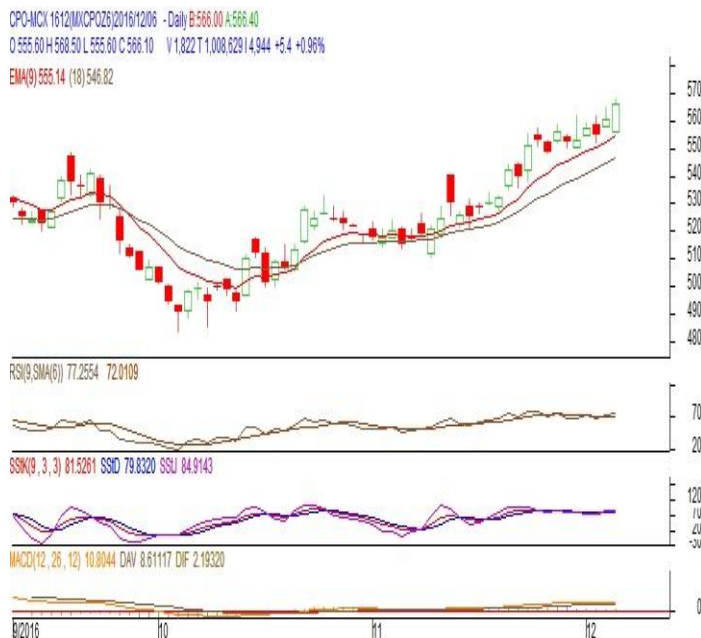
Intraday Supports & Resistances			S2	S1	PCP	R1	R2
Refined Soy Oil	NCDEX	Dec	694	709	736.6	750	765
Intraday Trade Call			Call	Entry	T1	T2	SL
Refined Soy Oil	NCDEX	Dec	Buy	Above 735	740	742	732

* Do not carry-forward the position next day.

Commodity: Crude Palm Oil
Contract: December
Exchange: MCX
Expiry: December. 31st 2016
CRUDE PALM OIL (CPO)
Technical Commentary:

- Crude palm oil December contract closed higher on Tuesday. Candlestick made on Tuesday indicates prices could rise on technical buying at these levels.
- Prices are above 9 day EMA and 18 day EMA which implies uptrend in prices.
- Oscillator like RSI, MACD and Stochastic are indicating uptrend in prices.

The CPO prices are likely to feature gains today.


Strategy: Buy

Intraday Supports & Resistances			S2	S1	PCP	R1	R2
Crude Palm Oil	MCX	Dec	539	549	566.1	578	595
Intraday Trade Call			Call	Entry	T1	T2	SL
Crude Palm Oil	MCX	Dec	Buy	Above 565	570	572	562

* Do not carry-forward the position next day.

Disclaimer

The information and opinions contained in the document have been compiled from sources believed to be reliable. The company does not warrant its accuracy, completeness and correctness. Use of data and information contained in this report is at your own risk. This document is not, and should not be construed as, an offer to sell or solicitation to buy any commodities. This document may not be reproduced, distributed or published, in whole or in part, by any recipient hereof for any purpose without prior permission from the Company. IASL and its affiliates and/or their officers, directors and employees may have positions in any commodities mentioned in this document (or in any related investment) and may from time to time add to or dispose of any such commodities (or investment). Please see the detailed disclaimer at <http://www.agriwatch.com/Disclaimer.asp>
 © 2016 Indian Agribusiness Systems Pvt Ltd.