

Commodity: Refined Soybean Oil
Contract: January

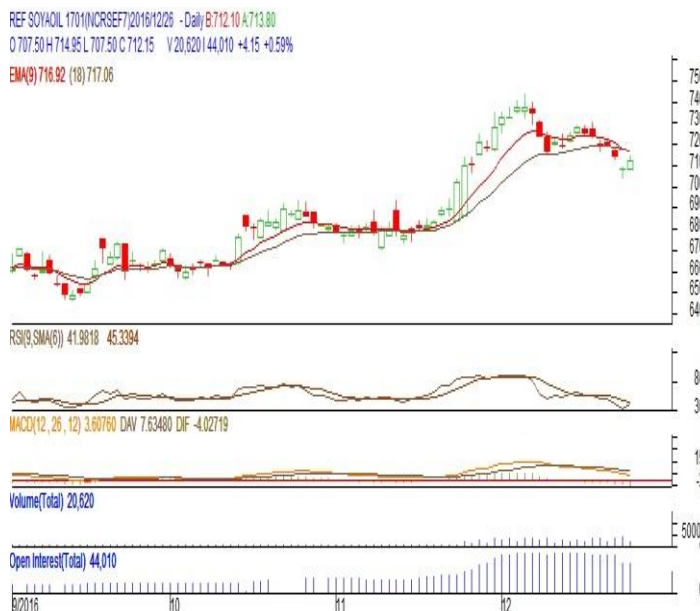
Exchange: NCDEX
Expiry: January.20th, 2017

REFINED SOYBEAN OIL (RSBO)

Technical Commentary:

- Soy oil prices traded higher on Monday. Candlestick made on Monday indicates prices could rise on technical buying at these levels.
- Prices are below 9 day EMA and 18 day EMA which implies downtrend in prices.
- Oscillator like RSI and MACD are indicating sideways trend in prices.
- PVO analysis point towards long buildup.

The soy oil prices are likely to feature gains today.



Strategy: Buy

Intraday Supports & Resistances			S2	S1	PCP	R1	R2
Refined Soy Oil	NCDEX	Jan	680	694	712.5	729	744
Intraday Trade Call			Call	Entry	T1	T2	SL
Refined Soy Oil	NCDEX	Jan	Buy	Above 711	716	718	708

* Do not carry-forward the position next day.

Commodity: Crude Palm Oil
Contract: January
Exchange: MCX
Expiry: January. 31st 2017
CRUDE PALM OIL (CPO)
Technical Commentary:

- Crude palm oil January contract closed higher on Monday. Candlestick made on Monday indicates prices could rise on technical buying at these levels.
- Prices are around 9 day EMA and 18 day EMA which implies indecisiveness in prices.
- Oscillator like RSI and MACD are indicating sideways trend in prices.
- PVO analysis point towards long buildup.

The CPO prices are likely to feature gains today.


Strategy: Buy

Intraday Supports & Resistances			S2	S1	PCP	R1	R2
Crude Palm Oil	MCX	Jan	539	549	564.9	578	595
Intraday Trade Call			Call	Entry	T1	T2	SL
Crude Palm Oil	MCX	Jan	Buy	Above 563	568	570	560

* Do not carry-forward the position next day.

Disclaimer

The information and opinions contained in the document have been compiled from sources believed to be reliable. The company does not warrant its accuracy, completeness and correctness. Use of data and information contained in this report is at your own risk. This document is not, and should not be construed as, an offer to sell or solicitation to buy any commodities. This document may not be reproduced, distributed or published, in whole or in part, by any recipient hereof for any purpose without prior permission from the Company. IASL and its affiliates and/or their officers, directors and employees may have positions in any commodities mentioned in this document (or in any related investment) and may from time to time add to or dispose of any such commodities (or investment). Please see the detailed disclaimer at <http://www.agriwatch.com/Disclaimer.asp>
 © 2016 Indian Agribusiness Systems Pvt Ltd.