

**Commodity: Refined Soybean Oil**  
**Contract: April**
**Exchange: NCDEX**  
**Expiry: April.20<sup>th</sup>, 2017**
**REFINED SOYBEAN OIL (RSBO)**
**Technical Commentary:**

- Soy oil prices traded higher on Monday. Candlestick made on Monday indicates prices could rise on technical buying at these levels.
- Prices are around 9 day EMA and 18 day EMA which implies indecisiveness in prices.
- Oscillator like RSI and MACD are showing indicating uptrend in prices.
- PVO analysis point towards weak market.

*The soy oil prices are likely to feature gains today.*


**Strategy: Buy**

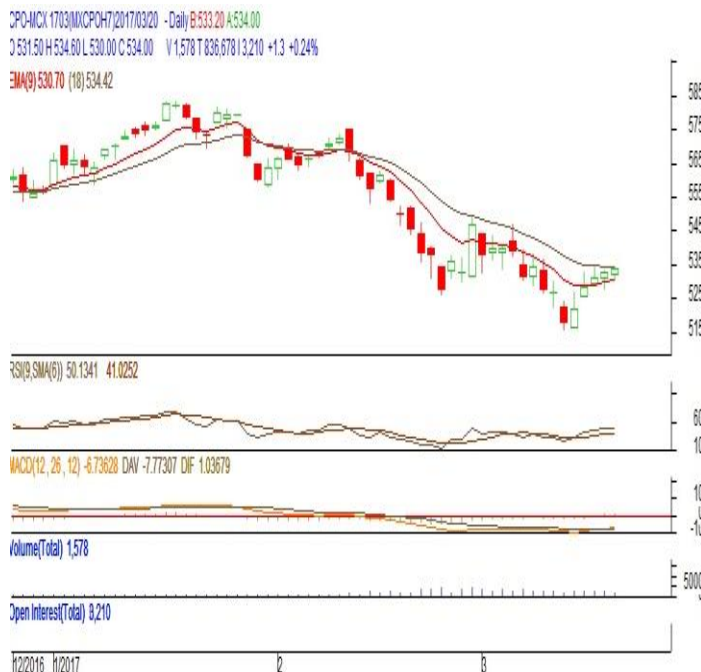
Intraday Supports & Resistances			S2	S1	PCP	R1	R2
Refined Soy Oil	NCDEX	Apr	610	624	647.2	666	678
Intraday Trade Call			Call	Entry	T1	T2	SL
Refined Soy Oil	NCDEX	Apr	Buy	Above 646	651	653	643

\* Do not carry-forward the position next day.

**Commodity: Crude Palm Oil**  
**Contract: March**
**Exchange: MCX**  
**Expiry: March. 31<sup>st</sup> 2017**
**CRUDE PALM OIL (CPO)**
**Technical Commentary:**

- Crude palm oil March contract closed higher on Monday. Candlestick made on Monday indicates prices could rise on technical buying at these levels.
- Prices are around 9 day EMA and 18 day EMA which implies indecisiveness in prices.
- Oscillator like RSI and MACD are mixed indicating uptrend in prices.
- PVO analysis point towards weak market.

*The CPO prices are likely to feature gains today.*


**Strategy: Buy**

Intraday Supports & Resistances			S2	S1	PCP	R1	R2
Crude Palm Oil	MCX	Mar	500	511	534	545	556
Intraday Trade Call			Call	Entry	T1	T2	SL
Crude Palm Oil	MCX	Mar	Buy	Above 533	539	541	530

\* Do not carry-forward the position next day.

**Disclaimer**

The information and opinions contained in the document have been compiled from sources believed to be reliable. The company does not warrant its accuracy, completeness and correctness. Use of data and information contained in this report is at your own risk. This document is not, and should not be construed as, an offer to sell or solicitation to buy any commodities. This document may not be reproduced, distributed or published, in whole or in part, by any recipient hereof for any purpose without prior permission from the Company. IASL and its affiliates and/or their officers, directors and employees may have positions in any commodities mentioned in this document (or in any related investment) and may from time to time add to or dispose of any such commodities (or investment). Please see the detailed disclaimer at <http://www.agriwatch.com/Disclaimer.asp>  
 © 2017 Indian Agribusiness Systems Pvt Ltd.