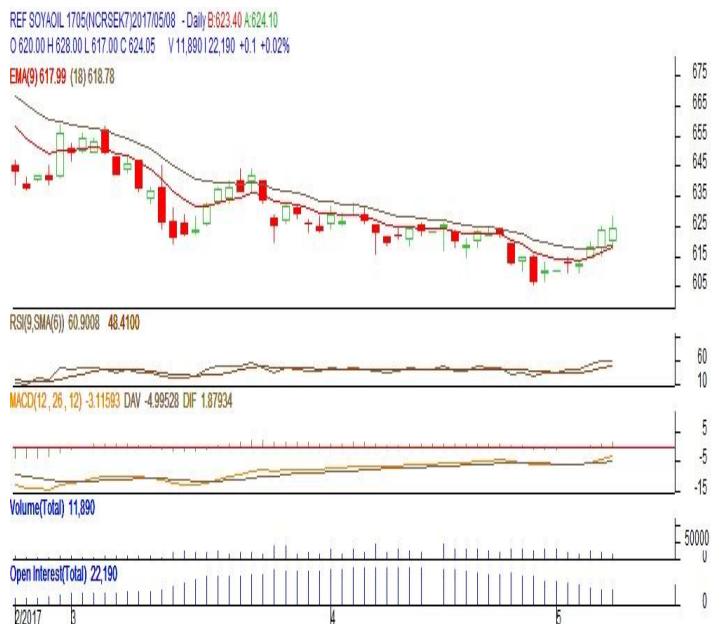


**Commodity: Refined Soybean Oil**  
**Contract: May**
**Exchange: NCDEX**  
**Expiry: May.20<sup>th</sup>, 2017**
**REFINED SOYBEAN OIL (RSBO)**
**Technical Commentary:**

- Soy oil prices traded higher. Candlestick made indicates prices could rise on technical buying at these levels.
- Prices are around 9 day EMA and 18 day EMA which implies indecisiveness in prices.
- Oscillator like RSI and MACD are indicating bullishness in prices.
- PVO analysis point towards weak market.

*The soy oil prices are likely to feature gains today.*


**Strategy: Buy**

Intraday Supports & Resistances			S2	S1	PCP	R1	R2
Refined Soy Oil	NCDEX	May	600	610	624.05	646	666
Intraday Trade Call			Call	Entry	T1	T2	SL
Refined Soy Oil	NCDEX	May	Buy	Above 623	628	630	620

\* Do not carry-forward the position next day.

Commodity: Crude Palm Oil  
Contract: May

Exchange: MCX  
Expiry: May. 31<sup>st</sup> 2017

### CRUDE PALM OIL (CPO)

#### Technical Commentary:

- Crude palm oil May contract closed lower. Candlestick made indicates prices could rise on technical buying at these levels.
- Prices are around 9 day EMA and 18 day EMA which implies indecisiveness in prices.
- Oscillator like RSI and MACD are indicating bullishness in prices.
- PVO analysis point towards short covering.

*The CPO prices are likely to feature gains today.*



#### Strategy: Buy

Intraday Supports & Resistances			S2	S1	PCP	R1	R2
Crude Palm Oil	MCX	May	465	480	494.1	514	524
Intraday Trade Call			Call	Entry	T1	T2	SL
Crude Palm Oil	MCX	May	Buy	Above 493	498	500	490

\* Do not carry-forward the position next day.

#### Disclaimer

The information and opinions contained in the document have been compiled from sources believed to be reliable. The company does not warrant its accuracy, completeness and correctness. Use of data and information contained in this report is at your own risk. This document is not, and should not be construed as, an offer to sell or solicitation to buy any commodities. This document may not be reproduced, distributed or published, in whole or in part, by any recipient hereof for any purpose without prior permission from the Company. IASL and its affiliates and/or their officers, directors and employees may have positions in any commodities mentioned in this document (or in any related investment) and may from time to time add to or dispose of any such commodities (or investment). Please see the detailed disclaimer at <http://www.agriwatch.com/Disclaimer.asp>  
© 2017 Indian Agribusiness Systems Pvt Ltd.