

**Commodity: Refined Soybean Oil**  
**Contract: July**
**Exchange: NCDEX**  
**Expiry: July.20<sup>th</sup>, 2017**
**REFINED SOYBEAN OIL (RSBO)**
**Technical Commentary:**

- Soy oil prices traded above its previous close. Candlestick made indicates prices could fall on technical selling at these levels.
- Prices are around 9 day EMA and 18 day EMA which implies weak trend in prices.
- Oscillator like RSI and MACD are indicating weak trend in prices.
- PVO analysis point towards short covering.

*The soy oil prices are likely to feature losses today.*

REF SOYAOIL 1707(NCRSE17)20170622 - Daily B:625.20 A:626.20  
 O:625.90 H:626.90 L:622.15 C:626.10 V:17,570 I:46,630 +17 +0.27%  
 EMA(9):630.28 (18):630.04


**Strategy: Sell**

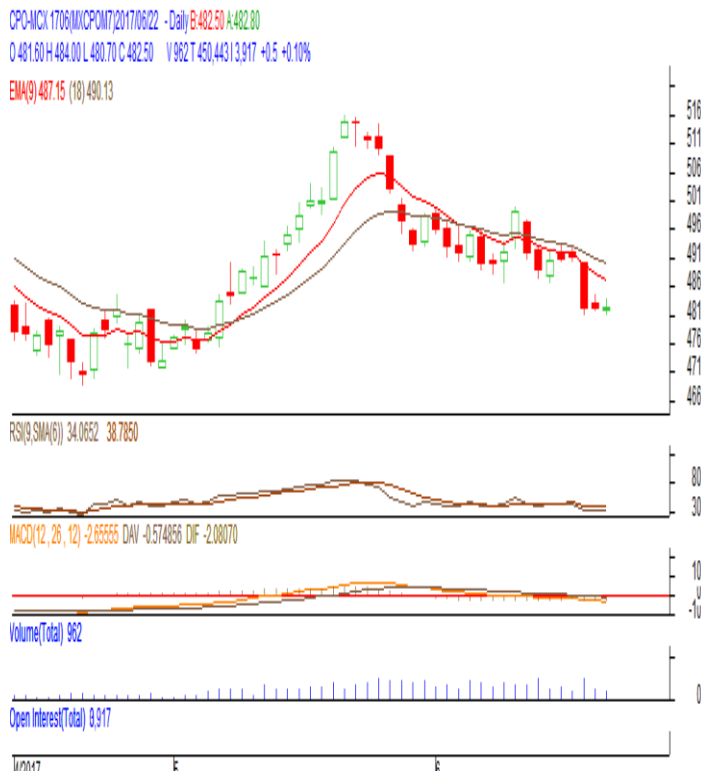
| Intraday Supports & Resistances |       |      | S2          | S1        | PCP   | R1  | R2  |
|---------------------------------|-------|------|-------------|-----------|-------|-----|-----|
| Refined Soy Oil                 | NCDEX | July | 580         | 600       | 626.1 | 646 | 656 |
| Intraday Trade Call             |       |      | Call        | Entry     | T1    | T2  | SL  |
| Refined Soy Oil                 | NCDEX | July | <b>Sell</b> | Below 628 | 623   | 621 | 631 |

\* Do not carry-forward the position next day.

**Commodity: Crude Palm Oil**  
**Contract: June**
**Exchange: MCX**  
**Expiry: June. 30<sup>th</sup> 2017**
**CRUDE PALM OIL (CPO)**
**Technical Commentary:**

- Crude palm oil June contract closed above its previous close. Candlestick made indicates prices could fall on technical selling at these levels.
- Prices are below 9 day EMA and 18 day EMA which implies weak sentiment in prices.
- Oscillator like RSI and MACD are indicating weak trend in prices.
- PVO analysis point towards short covering.

*The CPO prices are likely to feature losses today.*


**Strategy: Sell**

| Intraday Supports & Resistances |     |      | S2          | S1        | PCP   | R1  | R2  |
|---------------------------------|-----|------|-------------|-----------|-------|-----|-----|
| Crude Palm Oil                  | MCX | June | 455         | 468       | 482.5 | 517 | 537 |
| Intraday Trade Call             |     |      | Call        | Entry     | T1    | T2  | SL  |
| Crude Palm Oil                  | MCX | June | <b>Sell</b> | Below 484 | 479   | 477 | 487 |

\* Do not carry-forward the position next day.

**Disclaimer**

The information and opinions contained in the document have been compiled from sources believed to be reliable. The company does not warrant its accuracy, completeness and correctness. Use of data and information contained in this report is at your own risk. This document is not, and should not be construed as, an offer to sell or solicitation to buy any commodities. This document may not be reproduced, distributed or published, in whole or in part, by any recipient hereof for any purpose without prior permission from the Company. IASL and its affiliates and/or their officers, directors and employees may have positions in any commodities mentioned in this document (or in any related investment) and may from time to time add to or dispose of any such commodities (or investment). Please see the detailed disclaimer at <http://www.agriwatch.com/Disclaimer.asp>  
 © 2017 Indian Agribusiness Systems Pvt Ltd.