

Commodity: Refined Soybean Oil
Contract: September
Exchange: NCDEX
Expiry: Sep.20th, 2017
REFINED SOYBEAN OIL (RSBO)
Technical Commentary:

- Soy oil prices traded above its previous close.
- Candlestick pattern show fall in prices.
- Prices are above 9 day EMA and 18 day EMA which implies firm trend in prices.
- Oscillator like RSI and MACD are indicating firm sentiment in prices.
- PVO analysis point towards long liquidation.

The soy oil prices are likely to feature losses today.


Strategy: Sell

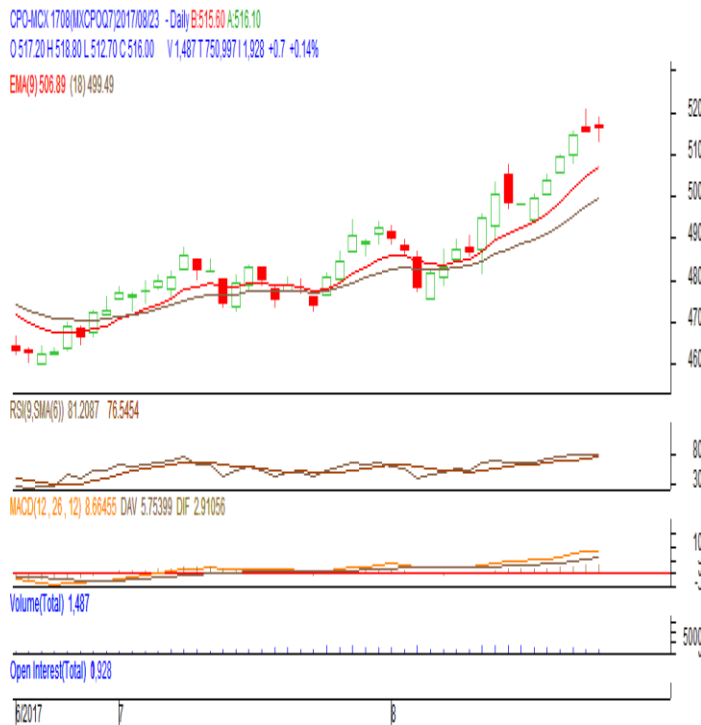
Intraday Supports & Resistances			S2	S1	PCP	R1	R2
Refined Soy Oil	NCDEX	Sep	624	641	660.5	666	680
Intraday Trade Call			Call	Entry	T1	T2	SL
Refined Soy Oil	NCDEX	Sep	Sell	Below 662	657	655	665

* Do not carry-forward the position next day.

Commodity: Crude Palm Oil
Contract: August
Exchange: MCX
Expiry: Aug. 31st 2017
CRUDE PALM OIL (CPO)
Technical Commentary:

- Crude palm oil August contract closed unchanged from its previous close.
- Candlestick made indicates prices could rise.
- Prices are above 9 day EMA and 18 day EMA which implies firm sentiment in prices.
- Oscillator like RSI and MACD are indicating firm trend in prices.
- PVO analysis point towards long liquidation.

The CPO prices are likely to feature losses today.


Strategy: Sell

Intraday Supports & Resistances			S2	S1	PCP	R1	R2
Crude Palm Oil	MCX	Aug	482	494	516	531	547
Intraday Trade Call			Call	Entry	T1	T2	SL
Crude Palm Oil	MCX	Aug	Sell	Below 517	512	510	520

* Do not carry-forward the position next day.

Disclaimer

The information and opinions contained in the document have been compiled from sources believed to be reliable. The company does not warrant its accuracy, completeness and correctness. Use of data and information contained in this report is at your own risk. This document is not, and should not be construed as, an offer to sell or solicitation to buy any commodities. This document may not be reproduced, distributed or published, in whole or in part, by any recipient hereof for any purpose without prior permission from the Company. IASL and its affiliates and/or their officers, directors and employees may have positions in any commodities mentioned in this document (or in any related investment) and may from time to time add to or dispose of any such commodities (or investment). Please see the detailed disclaimer at <http://www.agriwatch.com/Disclaimer.asp>
 © 2017 Indian Agribusiness Systems Pvt Ltd.