

**Commodity: Refined Soybean Oil**  
**Contract: October**
**Exchange: NCDEX**  
**Expiry: Oct.20<sup>th</sup>, 2017**
**REFINED SOYBEAN OIL (RSBO)**
**Technical Commentary:**

- Soy oil prices traded below its previous close.
- Candlestick pattern show rise in prices.
- Prices are above 9 day EMA and 18 day EMA which implies firm trend in prices.
- Oscillator like RSI and MACD are indicating mixed sentiment in prices.
- PVO analysis point towards long liquidation.

*The soy oil prices are likely to feature gains today.*


**Strategy: Buy**

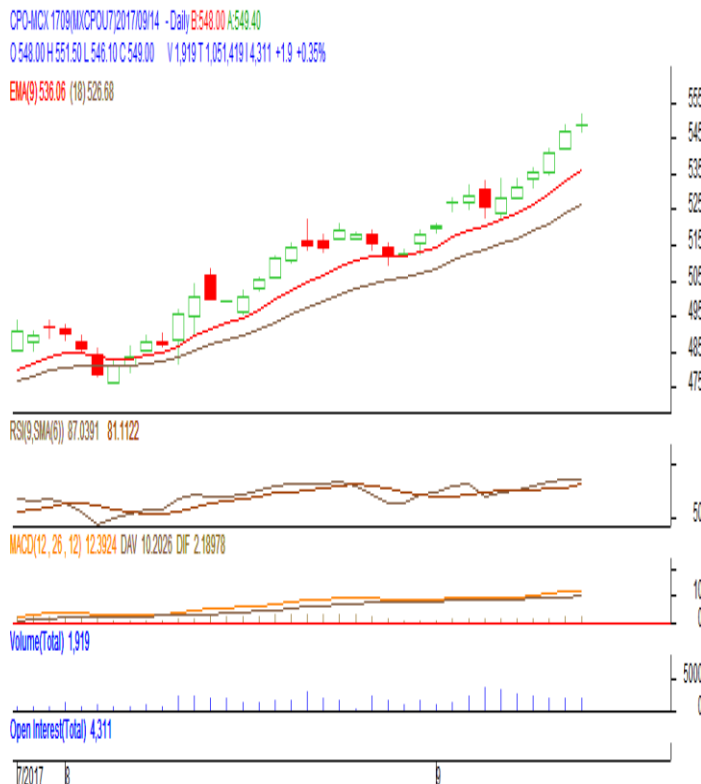
Intraday Supports & Resistances			S2	S1	PCP	R1	R2
Refined Soy Oil	NCDEX	Oct	641	666	675	695	700
Intraday Trade Call			Call	Entry	T1	T2	SL
Refined Soy Oil	NCDEX	Oct	Buy	Above 674	679	681	671

\* Do not carry-forward the position next day.

**Commodity: Crude Palm Oil**  
**Contract: September**
**Exchange: MCX**  
**Expiry: Sep. 30<sup>th</sup> 2017**
**CRUDE PALM OIL (CPO)**
**Technical Commentary:**

- Crude palm oil September contract closed above its previous close.
- Candlestick made indicates prices could rise.
- Prices are above 9 day EMA and 18 day EMA which implies firm sentiment in prices.
- Oscillator like RSI and MACD are indicating firm trend in prices.
- PVO analysis point towards long buildup.

*The CPO prices are likely to feature gains today.*


**Strategy: Buy**

Intraday Supports & Resistances			S2	S1	PCP	R1	R2
Crude Palm Oil	MCX	Sep	522	533	549	556	570
Intraday Trade Call			Call	Entry	T1	T2	SL
Crude Palm Oil	MCX	Sep	Buy	Above 548	553	555	545

\* Do not carry-forward the position next day.

**Disclaimer**

The information and opinions contained in the document have been compiled from sources believed to be reliable. The company does not warrant its accuracy, completeness and correctness. Use of data and information contained in this report is at your own risk. This document is not, and should not be construed as, an offer to sell or solicitation to buy any commodities. This document may not be reproduced, distributed or published, in whole or in part, by any recipient hereof for any purpose without prior permission from the Company. IASL and its affiliates and/or their officers, directors and employees may have positions in any commodities mentioned in this document (or in any related investment) and may from time to time add to or dispose of any such commodities (or investment). Please see the detailed disclaimer at <http://www.agriwatch.com/Disclaimer.asp>  
 © 2017 Indian Agribusiness Systems Pvt Ltd.