

Commodity: Refined Soybean Oil  
Contract: December

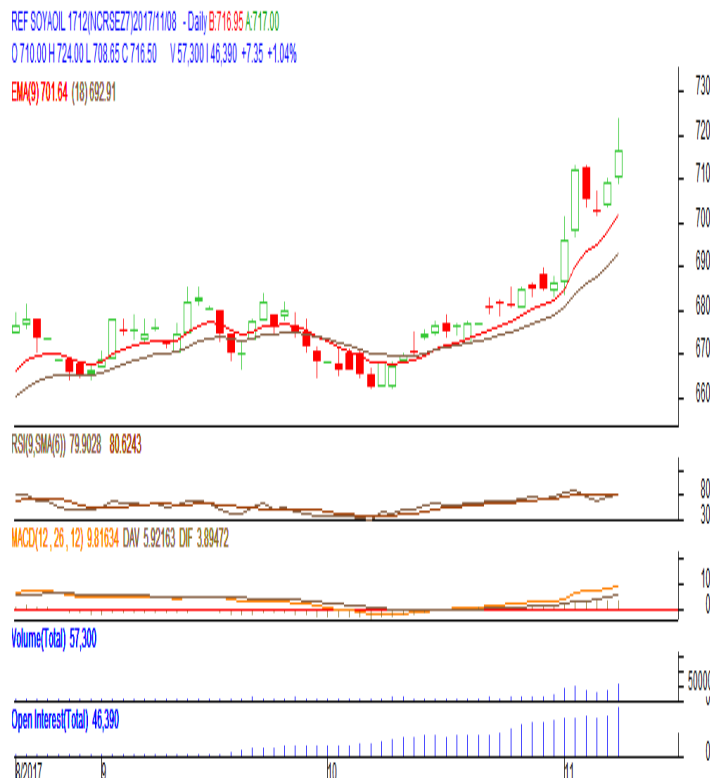
Exchange: NCDEX  
Expiry: Dec.20<sup>th</sup>, 2017

### REFINED SOYBEAN OIL (RSBO)

#### Technical Commentary:

- Soy oil prices traded above its previous close.
- Candlestick pattern rise in prices.
- Prices are above 9 day EMA and 18 day EMA which implies firm trend in prices.
- Oscillator like RSI and MACD are indicating firm sentiment in prices.
- PVO analysis point towards long buildup.

*The soy oil prices are likely to feature gains today.*



#### Strategy: Buy

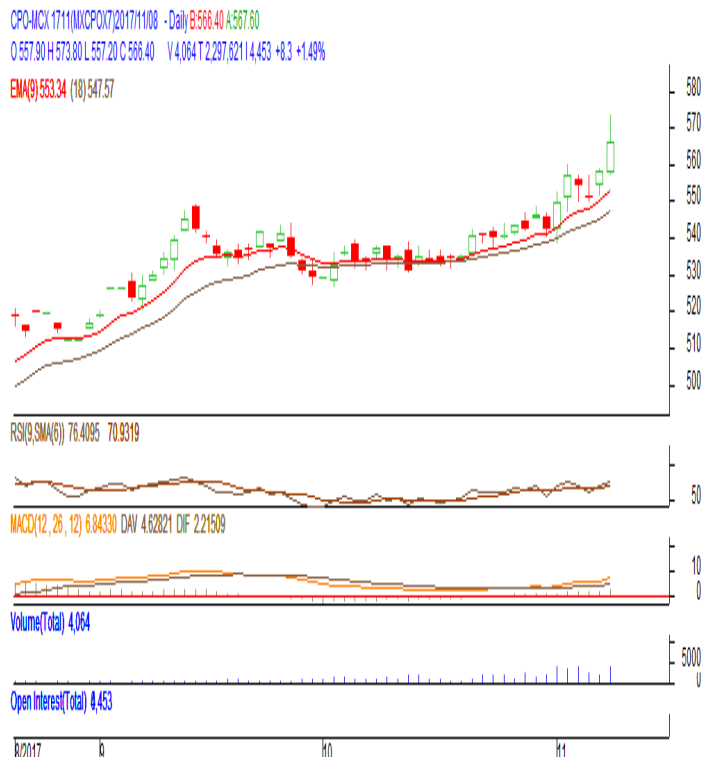
Intraday Supports & Resistances			S2	S1	PCP	R1	R2
Refined Soy Oil	NCDEX	Nov	682	701	716.5	725	740
Intraday Trade Call			Call	Entry	T1	T2	SL
Refined Soy Oil	NCDEX	Nov	Buy	Above 715	720	722	712

\* Do not carry-forward the position next day.

**Commodity: Crude Palm Oil**  
**Contract: November**
**Exchange: MCX**  
**Expiry: Nov. 30<sup>th</sup> 2017**
**CRUDE PALM OIL (CPO)**
**Technical Commentary:**

- Crude palm oil November contract closed above its previous close.
- Candlestick made indicates prices could rise.
- Prices are above 9 day EMA and 18 day EMA which implies firm sentiment in prices.
- Oscillator like RSI and MACD are indicating firm trend in prices.
- PVO analysis point towards long buildup.

*The CPO prices are likely to feature gains today.*


**Strategy: Buy**

Intraday Supports & Resistances			S2	S1	PCP	R1	R2
Crude Palm Oil	MCX	Nov	532	547	566.4	577	590
Intraday Trade Call			Call	Entry	T1	T2	SL
Crude Palm Oil	MCX	Nov	Buy	Above 565	570	572	562

\* Do not carry-forward the position next day.

**Disclaimer**

The information and opinions contained in the document have been compiled from sources believed to be reliable. The company does not warrant its accuracy, completeness and correctness. Use of data and information contained in this report is at your own risk. This document is not, and should not be construed as, an offer to sell or solicitation to buy any commodities. This document may not be reproduced, distributed or published, in whole or in part, by any recipient hereof for any purpose without prior permission from the Company. IASL and its affiliates and/or their officers, directors and employees may have positions in any commodities mentioned in this document (or in any related investment) and may from time to time add to or dispose of any such commodities (or investment). Please see the detailed disclaimer at <http://www.agriwatch.com/Disclaimer.asp>  
 © 2017 Indian Agribusiness Systems Ltd.