

Commodity: Refined Soybean Oil
Contract: May
Exchange: NCDEX
Expiry: May.20th, 2018
REFINED SOYBEAN OIL (RSBO)
Technical Commentary:

- Soy oil prices traded below its previous close.
- Candlestick pattern show fall in prices.
- Prices are below 9 day EMA and 18 day EMA which implies weak sentiment in prices.
- Oscillator like RSI and MACD are indicating weak sentiment in prices.
- PVO analysis point towards long liquidation.

The soy oil prices are likely to feature losses today.

REF SOYAOIL 1805(NCDEX)20180430 -Daily B:758.50 A:758.40
 O:762.00 H:764.90 L:756.50 C:758.30 V:7,660 148,800 -3.2 -0.42%
 EMA(9):768.61 (18):772.68


Strategy: Sell

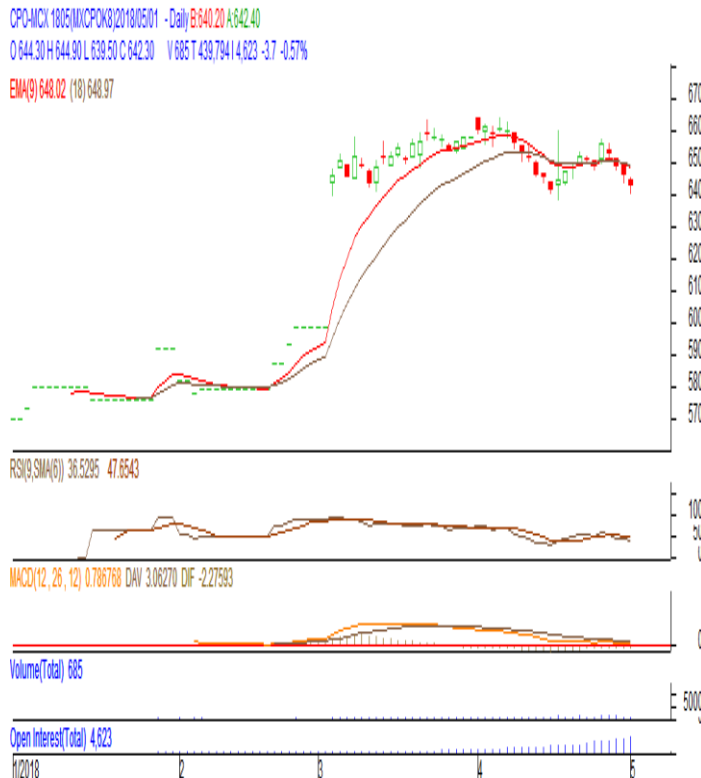
Intraday Supports & Resistances			S2	S1	PCP	R1	R2
Refined Soy Oil	NCDEX	May	732	749	759.3	774	789
Intraday Trade Call			Call	Entry	T1	T2	SL
Refined Soy Oil	NCDEX	May	Sell	Below 761	756	754	764

* Do not carry-forward the position next day.

Commodity: Crude Palm Oil
Contract: May
Exchange: MCX
Expiry: May. 31st 2018
CRUDE PALM OIL (CPO)
Technical Commentary:

- Crude palm oil May contract closed below its previous close.
- Candlestick made indicates prices could fall.
- Prices are around 9 day EMA and 18 day EMA which implies neutral sentiment in prices.
- Oscillator like RSI and MACD are indicating weak trend in prices.
- PVO analysis point towards short buildup.

The CPO prices are likely to feature losses today.


Strategy: Sell

Intraday Supports & Resistances			S2	S1	PCP	R1	R2
Crude Palm Oil	MCX	May	614	628	642.3	655	670
Intraday Trade Call			Call	Entry	T1	T2	SL
Crude Palm Oil	MCX	May	Sell	Below 644	639	637	647

* Do not carry-forward the position next day.

Disclaimer

The information and opinions contained in the document have been compiled from sources believed to be reliable. The company does not warrant its accuracy, completeness and correctness. Use of data and information contained in this report is at your own risk. This document is not, and should not be construed as, an offer to sell or solicitation to buy any commodities. This document may not be reproduced, distributed or published, in whole or in part, by any recipient hereof for any purpose without prior permission from the Company. IASL and its affiliates and/or their officers, directors and employees may have positions in any commodities mentioned in this document (or in any related investment) and may from time to time add to or dispose of any such commodities (or investment). Please see the detailed disclaimer at <http://www.agriwatch.com/Disclaimer.asp>
© 2018 Indian Agribusiness Systems Ltd.