

Commodity: Refined Soybean Oil
Contract: June
Exchange: NCDEX
Expiry: June.20th, 2018
REFINED SOYBEAN OIL (RSBO)
Technical Commentary:

- Soy oil continued to remain below the resistance level of 785
- Prices are above 9 day EMA and 18 day EMA which implies neutral sentiment in prices.
- Volumes have decreased whereas OI remained flat indicating waiting for crucial levels.
- The immediate resistance is at 785 and support at 775.
- Oscillator like RSI is indicating flat trend.
- Yesterday position didn't triggered

The soy oil prices are likely to feature sideways trend today.


Strategy: Sell

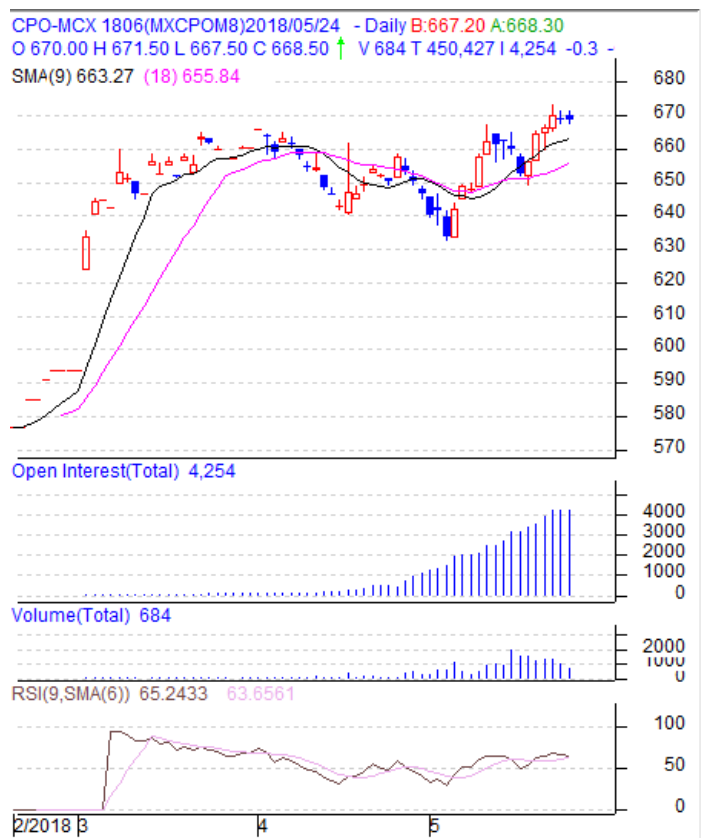
Intraday Supports & Resistances			S2	S1	PCP	R1	R2
Refined Soy Oil	NCDEX	May	732	746	778.55	785	792
Intraday Trade Call			Call	Entry	T1	T2	SL
Refined Soy Oil	NCDEX	May	Sell	780-781	775	770	785

* Do not carry-forward the position next day.

Commodity: Crude Palm Oil
Contract: May
Exchange: MCX
Expiry: June. 31st 2018
CRUDE PALM OIL (CPO)
Technical Commentary:

- Crude palm oil June contract formed a double doji pattern yesterday in daily chart indicating strong bearish reversal
- Prices couldn't able to sustain high after breaching the resistance level
- Prices are above 9 day EMA and 18 day EMA.
- RSI momentum oscillator's upward momentum is fading indicating the short term rally is over.
- The immediate resistance is at 690 and support is at 665.

The CPO prices are likely to feature sideways to downtrend today.


Strategy: Sell

Intraday Supports & Resistances			S2	S1	PCP	R1	R2
Crude Palm Oil	MCX	May	650	666	668.5	690	--
Intraday Trade Call			Call	Entry	T1	T2	SL
Crude Palm Oil	MCX	May	Sell	668-670	666	660	675

* Do not carry-forward the position next day.

Disclaimer

The information and opinions contained in the document have been compiled from sources believed to be reliable. The company does not warrant its accuracy, completeness and correctness. Use of data and information contained in this report is at your own risk. This document is not, and should not be construed as, an offer to sell or solicitation to buy any commodities. This document may not be reproduced, distributed or published, in whole or in part, by any recipient hereof for any purpose without prior permission from the Company. IASL and its affiliates and/or their officers, directors and employees may have positions in any commodities mentioned in this document (or in any related investment) and may from time to time add to or dispose of any such commodities (or investment). Please see the detailed disclaimer at <http://www.agriwatch.com/Disclaimer.asp>
 © 2018 Indian Agribusiness Systems Ltd.