

Commodity: Refined Soybean Oil
Contract: November

Exchange: NCDEX
Expiry: Nov.20th, 2018

REFINED SOYBEAN OIL (RSBO)

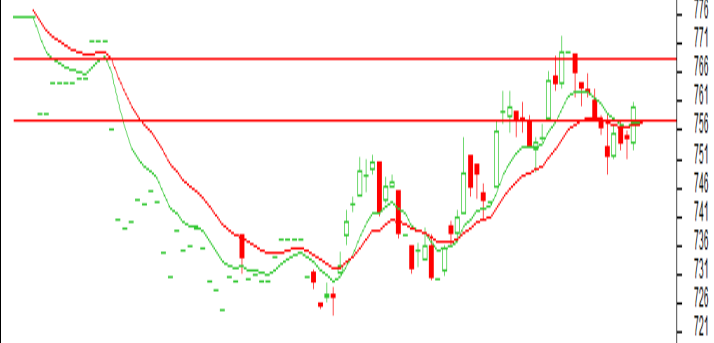
Technical Commentary:

- Soy oil prices traded above its previous close.
- Candlestick pattern show fall in prices.
- Prices are around 9 day EMA and 18 day EMA which implies neutral sentiment in prices.
- Oscillator like RSI and MACD are indicating WEAK sentiment in prices.
- PVO analysis point towards short covering.

The soy oil prices are likely to feature losses today.

REF SOYAOIL 1811(NCDEX)201811102 - Daily B:756.75 A:757.00
O:757.50 H:757.50 L:757.00 C:757.00 V:330129.020 -3 -0.39%

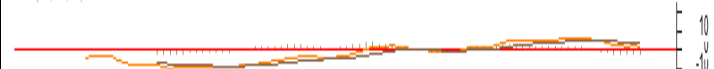
EMA(9) 757.18 (18) 756.82



RSI(9, SMA(5)) 50.0839 46.3231



MACD(12, 26, 12) 1.96987 DAI 3.48294 DIF -1.52307



Volume(Total) 330



Open Interest(Total) 29,020



Strategy: Sell

Intraday Supports & Resistances			S2	S1	PCP	R1	R2
Refined Soy Oil	NCDEX	Nov	730	740	760	763	772
Intraday Trade Call			Call	Entry	T1	T2	SL
Refined Soy Oil	NCDEX	Nov	Sell	Below 761	756	754	764

* Do not carry-forward the position next day.

Commodity: Crude Palm Oil
Contract: November
Exchange: MCX
Expiry: Nov.30th2018
CRUDE PALM OIL (CPO)
Technical Commentary:

- Crude palm oil November contract closed above its previous close.
- Candlestick made indicates prices could fall.
- Prices are below 9 day EMA and 18 day EMA which implies weak sentiment in prices.
- Oscillator like RSI and MACD are indicating weak trend in prices.
- PVO analysis point towards short covering.

The CPO prices are likely to feature losses today.


Strategy: Sell

Intraday Supports & Resistances			S2	S1	PCP	R1	R2
Crude Palm Oil	MCX	Nov	540	555	571.3	581	604
Intraday Trade Call			Call	Entry	T1	T2	SL
Crude Palm Oil	MCX	Nov	Sell	Below 572	567	565	575

* Do not carry-forward the position next day.

Disclaimer

The information and opinions contained in the document have been compiled from sources believed to be reliable. The company does not warrant its accuracy, complete and correctness. Use of data and information contained in this report is at your own risk. This document is not, and should not be construed as, an offer to sell or solicit to buy any commodities. This document may not be reproduced, distributed or published, in whole or in part, by any recipient hereof for any purpose without prior permission of the Company. IASL and its affiliates and/or their officers, directors and employees may have positions in any commodities mentioned in this document (or in any investment) and may from time to time add to or dispose of any such commodities (or investment). Please see the detailed disclaimer <http://www.agriwatch.com/disclaimer.php> 2018 Indian Agribusiness Systems Ltd.