

Commodity: Refined Soybean Oil  
Contract: February

Exchange: NCDEX  
Expiry: Feb.20<sup>th</sup>, 2019

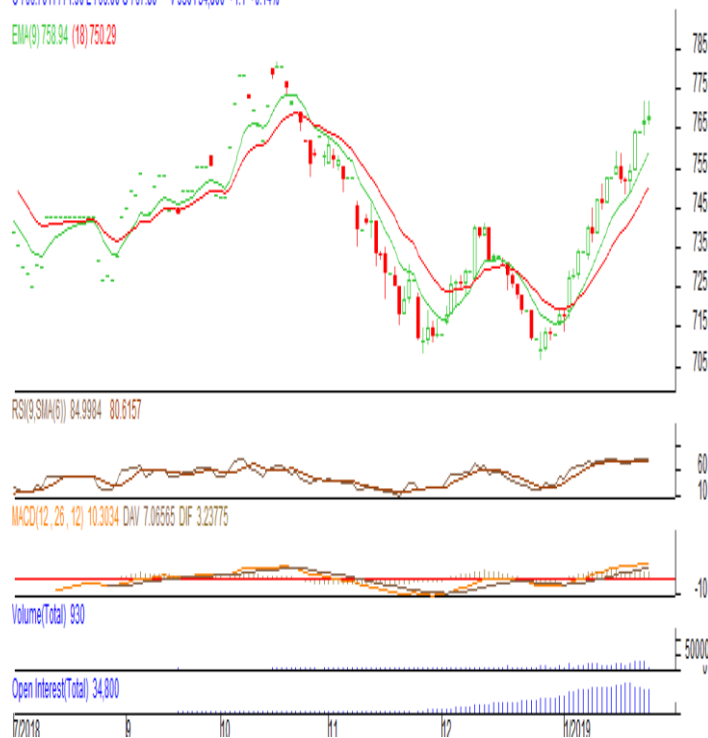
### REFINED SOYBEAN OIL (RSBO)

#### Technical Commentary:

- Soy oil prices traded above its previous close.
- Candlestick pattern show rise in prices.
- Prices are above 9 day EMA and 18 day EMA which implies firm sentiment in prices.
- Oscillator like RSI and MACD are indicating firm sentiment in prices.
- PVO analysis point towards long buildup.

*The soy oil prices are likely to feature gains today.*

REF SOYAOIL 1902(NCRSEG9)20190122 -Daily B:767.50 A:767.70  
O:766.70 H:771.90 L:766.00 C:767.80 V:930134.000 +1.1 +0.14%  
EMA(9):758.94 (18):750.29



#### Strategy: Buy

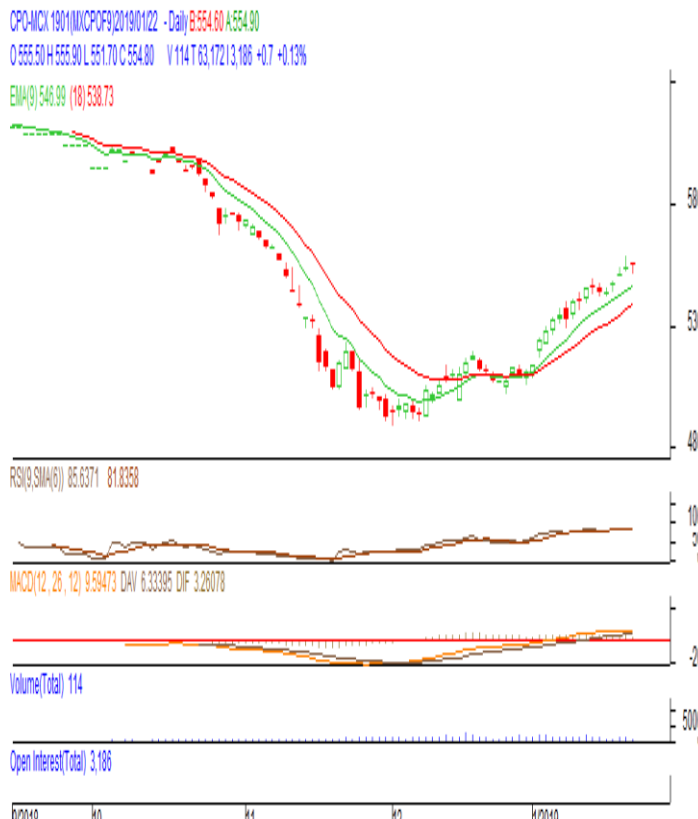
Intraday Supports & Resistances			S2	S1	PCP	R1	R2
Refined Soy Oil	NCDEX	Jan	742	752	767.5	780	790
Intraday Trade Call			Call	Entry	T1	T2	SL
Refined Soy Oil	NCDEX	Jan	Buy	Above 765	770	772	762

\* Do not carry-forward the position next day.

**Commodity: Crude Palm Oil**  
**Contract: January**
**Exchange: MCX**  
**Expiry: Jan.31<sup>st</sup> 2019**
**CRUDE PALM OIL (CPO)**
**Technical Commentary:**

- Crude palm oil January contract closed above its previous close.
- Candlestick made indicates prices could rise.
- Prices are above 9 day EMA and 18 day EMA which implies firm sentiment in prices.
- Oscillator like RSI and MACD are indicating firm trend in prices.
- PVO analysis point towards long buildup.

*The CPO prices are likely to feature gains today.*


**Strategy: Buy**

Intraday Supports & Resistances			S2	S1	PCP	R1	R2
Crude Palm Oil	MCX	Jan	530	540	555	570	580
Intraday Trade Call			Call	Entry	T1	T2	SL
Crude Palm Oil	MCX	Jan	Buy	Above 554	559	561	551

\* Do not carry-forward the position next day.

**Disclaimer**

The information and opinions contained in the document have been compiled from sources believed to be reliable. The company does not warrant its accuracy, complete and correctness. Use of data and information contained in this report is at your own risk. This document is not, and should not be construed as, an offer to sell or solicit to buy any commodities. This document may not be reproduced, distributed or published, in whole or in part, by any recipient hereof for any purpose without prior permission of the Company. IASL and its affiliates and/or their officers, directors and employees may have positions in any commodities mentioned in this document (or in any investment) and may from time to time add to or dispose of any such commodities (or investment). Please see the detailed disclaimer at <http://www.agriwatch.com/disclaimer.php> 2019 Indian Agribusiness Systems Ltd.