

Commodity: Refined Soybean Oil
Contract: Dec

Exchange: NCDEX
Expiry: Dec.20th, 2019

REFINED SOYBEAN OIL (RSBO)

Technical Commentary:

- Soy oil prices traded above its previous close.
- Candlestick pattern show rise in prices.
- Prices are around 9 day EMA and 18 day EMA which implies neutral sentiment in prices.
- Oscillator like RSI and MACD are indicating mixed sentiment in prices.
- PVO analysis point towards long buildup.

The soy oil prices are likely to feature gains today.

REF SOYAOIL 1912(NCRSEZ3)20191125 - Daily B:811.00 A:811.25
O:809.40 H:812.70 L:808.20 C:811.00 V:3,940 I:47,850 +3.7 +0.46%
EMA(9):803.83 (18):795.91



Strategy: Buy

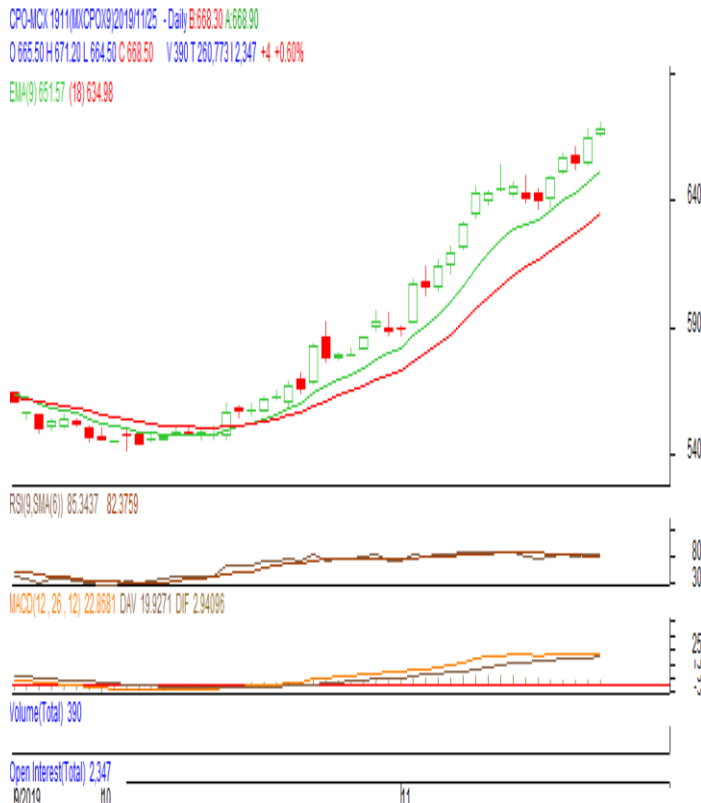
Intraday Supports & Resistances			S2	S1	PCP	R1	R2
Refined Soy Oil	NCDEX	Dec	780	790	811	820	830
Intraday Trade Call			Call	Entry	T1	T2	SL
Refined Soy Oil	NCDEX	Dec	Buy	Above 809	814	816	806

* Do not carry-forward the position next day.

Commodity: Crude Palm Oil
Contract: Nov
Exchange: MCX
Expiry: Nov.30th 2019
CRUDE PALM OIL (CPO)
Technical Commentary:

- Crude palm oil Nov contract above its previous close.
- Candlestick made indicates prices could rise.
- Prices are around 9 day EMA and 18 day EMA which implies neutral sentiment in prices.
- Oscillator like RSI and MACD are indicating mixed sentiment in prices.
- PVO analysis point towards long buildup.

The CPO prices are likely to feature gains today.


Strategy: Buy

Intraday Supports & Resistances			S2	S1	PCP	R1	R2
Crude Palm Oil	MCX	Nov	620	635	656.5	670	680
Intraday Trade Call			Call	Entry	T1	T2	SL
Crude Palm Oil	MCX	Nov	Buy	Above 654	659	661	651

* Do not carry-forward the position next day.

Disclaimer

The information and opinions contained in the document have been compiled from sources believed to be reliable. The company does not warrant its accuracy, completeness and correctness. Use of data and information contained in this report is at your own risk. This document is not, and should not be construed as, an offer to sell or solicitation to buy any commodities. This document may not be reproduced, distributed or published, in whole or in part, by any recipient hereof for any purpose without prior permission from the Company. IASL and its affiliates and/or their officers, directors and employees may have positions in any commodities mentioned in this document (or in any related investment) and may from time to time add to or dispose of any such commodities (or investment). Please see the detailed disclaimer at © <http://www.agriwatch.com/disclaimer.php> 2019 Indian Agribusiness Systems Ltd.