

Commodity: Refined Soybean Oil
Contract: Jan

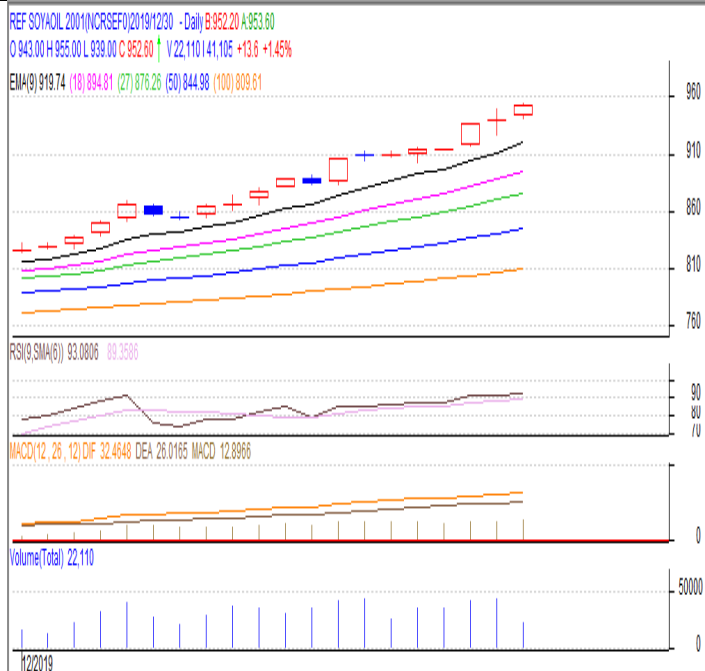
Exchange: NCDEX
Expiry: Dec.20th, 2019

REFINED SOYBEAN OIL (RSBO)

Technical Commentary:

- Soy oil prices traded above its previous close.
- Candlestick pattern show rise in prices.
- Prices are around 9 day EMA and 18 day EMA which implies neutral sentiment in prices.
- Oscillator like RSI and MACD are indicating firm sentiment in prices.
- PVO analysis point towards long liquidation.

The soy oil prices are likely to feature gain today.



Strategy: Buy

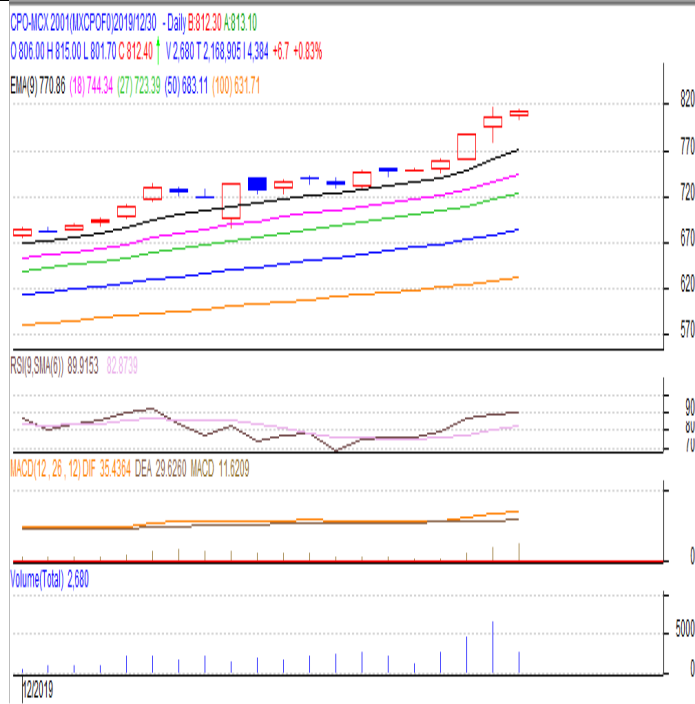
Intraday Supports & Resistances			S2	S1	PCP	R1	R2
Refined Soy Oil	NCDEX	Jan	850	880	952.6	980	1020
Intraday Trade Call			Call	Entry	T1	T2	SL
Refined Soy Oil	NCDEX	Jan	Buy	Above 947	955	960	940

* Do not carry-forward the position next day.

Commodity: Crude Palm Oil
Contract: Dec
Exchange: MCX
Expiry: Dec.31st 2019
CRUDE PALM OIL (CPO)
Technical Commentary:

- Crude palm oil Dec contract above its previous close.
- Candlestick indicates prices could rise.
- Prices are around 9 day EMA and 18 day EMA which implies neutral sentiment in prices.
- Oscillator like RSI and MACD are indicating firm sentiment in prices.
- PVO analysis point towards long liquidation.

The CPO prices are likely to feature gain today.


Strategy: Buy

Intraday Supports & Resistances			S2	S1	PCP	R1	R2
Crude Palm Oil	MCX	Dec	750	780	813	880	920
Intraday Trade Call			Call	Entry	T1	T2	SL
Crude Palm Oil	MCX	Dec	Buy	Above 810	820	830	800

* Do not carry-forward the position next day.

Disclaimer

The information and opinions contained in the document have been compiled from sources believed to be reliable. The company does not warrant its accuracy, completeness and correctness. Use of data and information contained in this report is at your own risk. This document is not, and should not be construed as, an offer to sell or solicit to buy any commodities. This document may not be reproduced, distributed or published, in whole or in part, by any recipient hereof for any purpose without prior permission from the Company. IASL and its affiliates and/or their officers, directors and employees may have positions in any commodities mentioned in this document (or in any investment) and may from time to time add to or dispose of any such commodities (or investment). Please see the detailed disclaimer <http://www.agriwatch.com/disclaimer.php> 2019 Indian Agribusiness Systems Ltd.