



Commodity: Refined Soybean Oil

Contract: Jan

Exchange: NCDEX

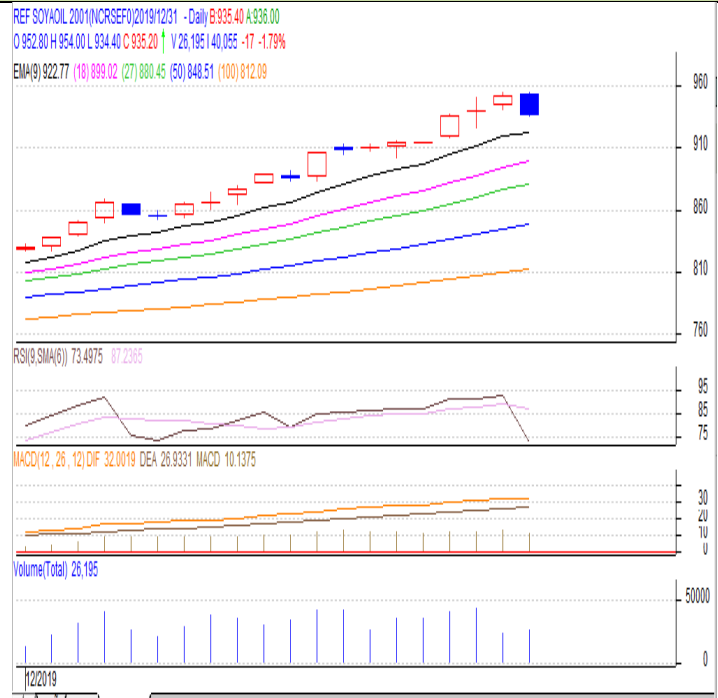
Expiry: Jan.20th 2019

REFINED SOYBEAN OIL (RSBO)

Technical Commentary:

- Soy oil prices traded below its previous close.
- Candlestick pattern show fall in prices.
- Prices are around 9 day EMA and 18 day EMA which implies neutral sentiment in prices.
- Oscillator like RSI and MACD are indicating weak sentiment in prices.
- PVO analysis point towards short build up phase.

The soy oil prices are likely to feature loss today.



Strategy: Sell

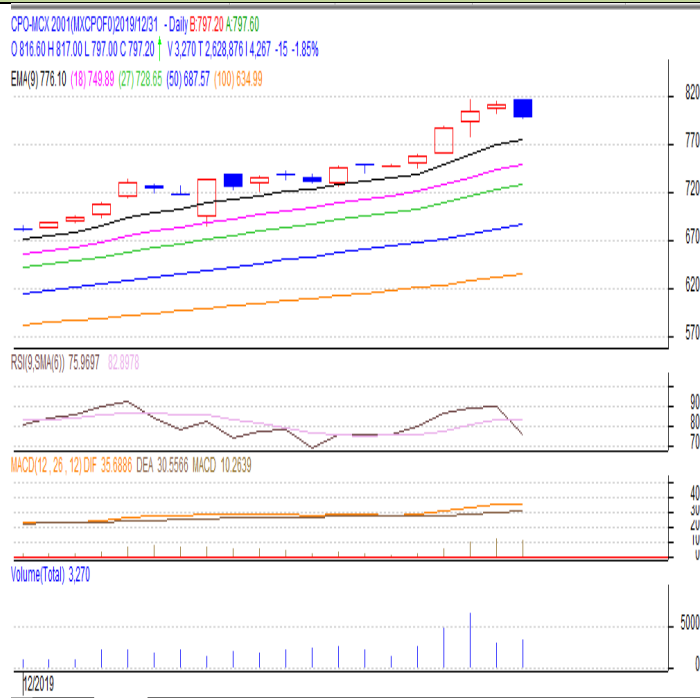
Intraday Supports & Resistances			S2	S1	PCP	R1	R2
Refined Soy Oil	NCDEX	Jan	880	900	935.6	950	970
Intraday Trade Call			Call	Entry	T1	T2	SL
Refined Soy Oil	NCDEX	Jan	Sell	Below 935	930	927	940

* Do not carry-forward the position next day.

Commodity: Crude Palm Oil
Contract: Jan
Exchange: MCX
Expiry: Jan.31st 2019
CRUDE PALM OIL (CPO)
Technical Commentary:

- Crude palm oil Dec contract below its previous close.
- Candlestick indicates prices could fall.
- Prices are around 9 day EMA and 18 day EMA which implies neutral sentiment in prices.
- Oscillator like RSI and MACD are indicating weak sentiment in prices.
- PVO analysis point towards short build up phase of the market.

The CPO prices are likely to feature loss today.


Strategy: Sell

Intraday Supports & Resistances			S2	S1	PCP	R1	R2
Crude Palm Oil	MCX	Jan	740	760	797.10	850	900
Intraday Trade Call			Call	Entry	T1	T2	SL
Crude Palm Oil	MCX	Jan	Sell	Below 800	795	788	810

* Do not carry-forward the position next day.

Disclaimer

The information and opinions contained in the document have been compiled from sources believed to be reliable. The company does not warrant its accuracy, completeness and correctness. Use of data and information contained in this report is at your own risk. This document is not, and should not be construed as, an offer to sell or solicit to buy any commodities. This document may not be reproduced, distributed or published, in whole or in part, by any recipient hereof for any purpose without prior permission from the Company. IASL and its affiliates and/or their officers, directors and employees may have positions in any commodities mentioned in this document (or in any investment) and may from time to time add to or dispose of any such commodities (or investment). Please see the detailed disclaimer <http://www.agriwatch.com/disclaimer.php> 2019 Indian Agribusiness Systems Ltd.