

**Commodity: Refined Soybean Oil**  
**Contract: February**

**Exchange: NCDEX**  
**Expiry: Feb.20th, 2021**

### REFINED SOYBEAN OIL (RSO)

#### Technical Commentary:

- ♣ Soy oil closed higher with rise in trading volumes.
- ♣ Open Interest analysis indicates short covering.
- ♣ Prices are above 9 Days and 18 Days average.
- ♣ RSI is indicating sideways sentiments.

*The prices are indicating towards short covering.*



**Strategy: Buy**

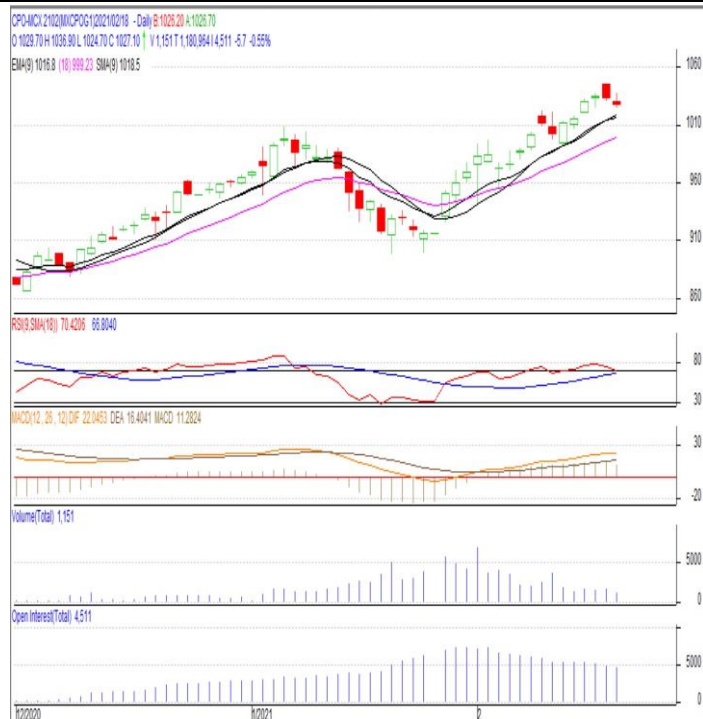
Intraday Supports & Resistances			S2	S1	PCP	R1	R2
Refined Soy Oil	NCDEX	Feb	1135.77	1142.44	1153.3	1165.17	1176.54
Intraday Trade Call			Call	Entry	T1	T2	SL
Refined Soy Oil	NCDEX	Feb	Buy	Above 1152	1157	1159	1149

\* Positions may be carried forward up to 1-2 days, but stoploss must be strictly adhered to.

**Commodity: Crude Palm Oil**  
**Contract: February**
**Exchange: MCX**  
**Expiry: Feb.28<sup>th</sup> 2021**
**CRUDE PALM OIL (CPO)**
**Technical Commentary:**

- ♣ Crude Palm Oil closed lower than previous day at 1027.1
- ♣ Prices are above 9-days and 18-days average.
- ♣ RSI is in overbought zone may go for price corrections.

*The prices are indicating towards consolidation.*


**Strategy: Sell**

Intraday Supports & Resistances			S2	S1	PCP	R1	R2
Crude Palm Oil	MCX	Feb	1011.22	1019.29	1027.1	1034.43	1041.77
Intraday Trade Call			Call	Entry	T1	T2	SL
Crude Palm Oil	MCX	Feb	<b>Sell</b>	Below 1027	1022	1020	1030

\* Positions may be carried forward up to 1-2 days, but stoploss must be strictly adhered to.

**Disclaimer**

The information and opinions contained in the document have been compiled from sources believed to be reliable. The company does not warrant its accuracy, completeness and correctness. Use of data and information contained in this report is at your own risk. This document is not, and should not be construed as, an offer to sell or solicitation to buy any commodities. This document may not be reproduced, distributed or published, in whole or in part, by any recipient hereof for any purpose without prior permission from the Company. IASL and its affiliates and/or their officers, directors and employees may have positions in any commodities mentioned in this document (or in any related investment) and may from time to time add to or dispose of any such commodities (or investment). Please see the detailed disclaimer at © <http://www.agriwatch.com/disclaimer.php> 2021 Indian Agribusiness Systems Ltd.