

# Veg. Oil Weekly Research Report

## Contents

- ❖ Executive Summary
- ❖ Recommendations
- ❖ International Veg. Oil Market Summary
- ❖ Domestic Market Fundamentals
- ❖ Technical Analysis (Spot Market)
- ❖ Technical Analysis (Futures Market)
- ❖ Veg. Oil Prices at Key Spot Markets

## **Executive Summary**

### **Domestic Veg. Oil Market Summary**

*Edible oil prices featured firm trend during this week in domestic market. CBOT soy oil and BMD palm oil fell during the week. Soy oil, palm oil, rapeseed oil, sunflower oil and groundnut oil prices fell while coconut oil prices closed sideways.*

*On the currency front, Indian rupee is hovering near 71.04 against 70.93 previous week. Factors to watch in the coming weeks will be movement of Indian rupee against US dollar and crude oil prices. Rupee is expected to depreciate and crude oil prices will rise in near-term.*

*We expect soy oil and palm oil to fall on weak fundamentals.*

#### **Outlook:**

*Weekly Call -: In NCDEX, Market participants are advised to go short below 890 levels for a target of 875 and 870 with a stop loss at 900 on closing basis. We expect refined soy oil at Indore (without GST) to stay in the range of Rs. 880-960 per 10 Kg. in the near term.*

*In MCX, market participants are advised to go short in CPO below 795 for a target of 780 and 775 with a stop loss at 805 on closing basis. We expect CPO Kandla 5 percent (without GST) to stay in the range of Rs 770-840 per 10 Kg in the near term.*

### **International Veg. Oil Market Summary**

*On the international front, fading US-China trade settlement optimism, fall in stocks of soy oil in US, higher crop of soybean in South America and fall in competing oils prices support soy oil prices in coming days.*

*Expectation of rise in palm oil stocks in Malaysia, fall in exports of palm oil from Malaysia and fall in competitive oils prices are expected to underpin CPO prices in near term.*

**Soy oil Fundamental Analysis and Outlook:-****Domestic Front**

- Soy oil featured weak sentiment in domestic markets in the week in review on weak demand and fall in competing oils.

US-China trade settlement optimism and rise in soybean demand from China will lead to strengthening of soy oil prices.

Import parity decreased during the week on depreciation of Rupee and is quoted at parity of 15-20 per 10 kg compared to parity of Rs 30-35 per 10 kg. Import demand are likely to rise

due to parity in imports and positive refining margins.

Soy oil demand is weak at high seas as its prices fell more at high seas compared to CNF markets compared to last week.

Soy oil demand is regular at CNF markets as prices fell equally at CNF and FOB markets compared to last week.

Trade agreement was signed between US and China on 15<sup>th</sup> Jan. China will purchase large amount of US agricultural goods in next two years. This will give boost to international soy oil prices.

Soybean demand from China has risen in Dec due to arrival of soybean shipments from US. Swine count has increased for the first time since one year will increase imports of soybean by China.

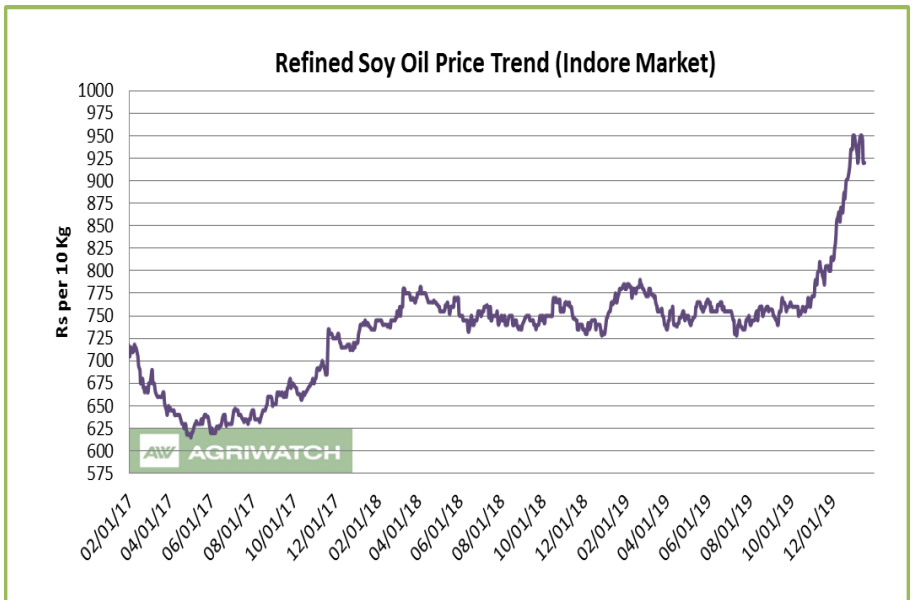
Soy oil stocks rose in US in Dec on higher crush of soybean due to lower disappearance of soy oil in US will lead to strengthening of soy oil international prices.

Basis of soy oil (Argentina) rose over soy oil CBOT on higher global demand of soy oil and change in government of Argentina leading to higher FOB soy oil (Argentina) prices. Its premium over CBOT is high.

Imports of soy oil rose in Dec 2019 compared to Dec 2018 and Nov 2019. Imports fell in Dec compared to Nov 2019 while port stocks rose less indicating weak demand in Nov and destocking at ports.

CDSO is trading at low premium over RBD palmolein at high seas at Rs. 15 (Rs 10 last week) per 10 kg will increase CDSO import demand. CDSO premium over CPO at high seas is at Rs 56 (Rs 61) per 10 kg is low and support soy oil prices. Refined soy oil discount over rapeseed oil Rs -5 (Rs -5) per 10 kg while refined soy oil discount over refined sunflower is at Rs 20.0 (Rs -10.0) per 10 kg. Sunflower oil CNF premium over soy oil CNF is at USD 2.5 (USD -29) per ton. Values in brackets are figures of last month.

Refined soy oil premium over RBD palmolein is higher at Rs 70 (Rs 60 last week) per 10 Kg, which is low and may support soy oil prices in domestic markets. In USD terms, premium of CDSO CNF over CPO CNF was quoted at USD 77 (USD 70 last week) per ton for Jan delivery, which is low and increase demand of CDSO at CNF markets compared to CPO CNF. Values in brackets are figures of last week.



- According to Solvent Extractors Association (SEA), India's December edible oil imports fell 3.41 percent y-o-y to 11.07 lakh tons from 11.46 lakh tons in Dec 2018. Palm oil imports in Dec fell 8.62 percent y-o-y to 7.42 lakh tons from 8.12 lakh tons in Dec 2018. CPO imports fell 5.67 percent in Dec y-o-y to 6.32 lakh tons from 6.70 lakh tons in Dec 2018. RBD palmolein imports fell by 27.48 percent in Dec y-o-y to 0.95 lakh tons from 1.31 lakh tons in Dec 2018. Soy oil imports rose 97.65 percent in Dec y-o-y to 1.68 lakh tons from 0.85 lakh tons in Dec 2018. Sunflower oil imports fell 16.1 percent y-o-y in Dec to 1.98 lakh tons from 2.36 lakh tons in Dec 2018. Rapeseed (canola) oil imports in Dec was zero compared to zero imports in Dec 2018.
- According to Solvent Extractors Association (SEA), India's December edible oil stocks at ports and pipelines fell 9.0 percent m-o-m to 13.75 lakh tons from 15.11 lakh tons in November 2019. Stocks of edible oil at ports in December fell to 860,000 tons (CPO 430,000 tons, RBD Palmolein 180,000 tons, Degummed Soybean Oil 135,000 tons and Crude Sunflower Oil 115,000 ton) and about 515,000 tons in pipelines. (Stocks at ports were 881,000 tons and in pipelines were 590,000 tons in November 2019). India is presently holding 22 days of edible oil requirement on 1st Jan, 2020 at 13.75 lakh tons compared to 24 days of requirements last month at 15.11 lakh tons last month. India held 20.25 lakh tons of stocks in ports and pipelines on 1st Jan 2019. India's monthly edible oil requirement is 19.0 lakh tons.
- Soy oil import scenario – According to SEA, soy oil imports rose 97.65 percent y-o-y in December to 1.68 lakh tons from 0.85 lakh tons in December 2018. In the oil year 2019-20 (Nov 2019-Dec 2019), imports of soy oil were 3.33 lakh tons compared to 2.89 lakh tons in last oil year, higher by 15.22 percent compared to last oil year.
- Imported crude soy oil CNF at West coast port is offered at USD 870 (USD 909) per ton for Jan delivery, Feb delivery is quoted at USD 870 (USD 909) per ton, Mar delivery is quoted at USD 850 (USD 887) per ton and Apr delivery is quoted at USD 835 (USD 863) per ton. Values in brackets are figures of last week. Last month, CNF CDSO Dec average price was USD 837.40 (USD 762.88 per ton in Nov 2019) per ton. Soy refined (Indore) is quoted at Rs 920 (Rs 947 last week) per 10 kg.
- On the parity front, margins decreased during the week on rise in international price of soy oil, and we expect margins to remain firm in coming days. Currently, refiners fetch USD 15-20/ton v/s gain of USD 30-35/ton (Dec month) margin in processing the imported Soybean Oil (Argentina Origin).

### International Front

Soy oil prices are underpinned by fading US-China trade settlement optimism, high stock of soy oil in US, higher crop of soybean in Brazil and Argentina, and fall in competing oils prices.

However, higher demand of soybean buy China and rise in crude oil prices will limit losses.

Trade settlement was signed between US and China on 15<sup>th</sup> Jan. The deal reached between US and China in which China will purchase USD 200 billion US farm products of removal of additional duties. However, there are punitive import. More details are still awaited. Trade settlement optimism will fade in coming days as thorny issue during implementation of trade truce will come out.

This trade deal is not a comprehensive trade deal and there is possibility of various such trade deals. There are major differences between both sides as US wants a comprehensive trade deal while China wants blanket removal of import duties.

Soy oil stocks rose in US as reported by NOPA on higher in crush of soybean leading to higher supply of soy oil. However, rise in stocks were much higher indicating lower domestic disappearance of soy oil in US. Soy oil stocks seasonally rise, and the rise was more than trade estimate.

Planting of soybean is over in Brazil and has finished in normal time due to favorable conditions. With the planting Brazil has planted record soybean area in 2019/20.

Soybean crop area is higher Brazil in 2019/20 leading to higher soybean crop in Brazil in 2019/20. Rains in key growing areas are aiding crop development and first harvest will start from Feb due to late planting. USDA has estimated Brazil's soybean crop for 2019/20 at 123 MMT making Brazil as top soybean producer in the world. USDA kept soybean crop in Brazil unchanged in Jan review.

Planting of soybean is progressing in Argentina in full swing and is expected to be wrapped by the end of Jan. Crop is in good condition but less rains in key areas have led to low moisture which will slow planting and crop development. Soybean crop area in Argentina is lower than last year and soybean crop will not exceed last year crop due to dry conditions in many areas, according to Buenos Aires Grains Exchange. USDA kept soybean crop unchanged for Argentina at 53 MMT. USDA is expected to hike soybean crop of Argentina in Feb estimate.

Competing oils like palm oil are expected to fall due to falling global demand is expected to underpin soy oil prices in coming days.

USDA increased soybean crop of US on higher soybean crop due to higher yields partially set off by lower harvested area, lower opening stocks and lower imports of soybean in it Jan estimate.

Soybean stocks estimate fell in US in 2019/20 due to lowering of soybean crop in US. Soybean crop in US was weakest in years. Soybean crop was below was just above at 96 MMT due to wet and cool spring, which stopped farmers plant soybean and adverse condition during crop progress.

USDA forecast soybean crop in US at 96 MMT in Jan review.

Argentina hiked export duties on exports of soy products from 24.5 percent to 30 percent. Argentina government has indicated that it will place more trade restrictions. This comes after appointment of conservative leader as Argentina agriculture minister. Pro reformist government of Macri lost to Alberto Fernandez, a conservative leader in Argentina polls. Trade reform under Macri was done mostly on corn and wheat while some reforms was done in soybean. This has led to expectation that more controls will come in corn and wheat. Soybean exports by Brazil to China is expected to fall in 2020 due to US-China trade settlement and China's protein diversification policy. However, China's restocking of soybean to increase swine count in 2020 will absorb surplus soybean stocks globally.

China reported higher soybean import demand in December after various US shipments reached China along with shipments from Brazil. China is restocking soybean after weak imports in 2019. China reported higher soybean imports in 2019 due to despite weak crush margins due to swine flu outbreak leading to 41 percent fall in swine count y-o-y. However, China has increase swine count for the first time in year. This will support soybean restocking by China

China is giving incentive of swine farmers like insurance and machinery incentive to increase swine count in the country after swine flu led to 41 percent contraction of swine count due to culling of swine to stop the spread of swine flu. This led to lower demand of soybean feed in the country in longer term. This has led to surge in imports of edible vegetable oil by China in 2019.

China has opened soy meal market for imports from Argentina and Ukraine, in an effort to improve supply of soy meal in the country. Supplies of Argentina meal will start from the harvest of its crop in 2020. China has allowed poultry imports from Europe to tide over shortage of meat in its domestic market. Further, China has allowed cotton meal imports from Brazil and allowed poultry and meat imports from Canada and US to tide over rising domestic meat prices.

China reported 13 percent rise in soybean production in the country in the current year. However, it is insufficient to meet the country's demand.

Higher import of soybean by China will lead to shift of buyers from South America to US and competing oils like palm oil will fall due to higher supply of soy oil in China due to higher soybean imports by China.

Argentina's soybean exports is expected lower due to be lower Chinese demand on US-China trade settlement.

Soy oil exports from Argentina are expected to accelerate due to firm demand from importing destinations.

Soy oil prices are supported by rise in crude oil prices as US killed Iran general in a drone strike, which led to Iran declaring war against US. Due to this, there has been escalation in tensions between both countries and further escalation is not ruled out. This will likely boost crude oil prices.

- According to National Oilseed Processors Association (NOPA), U.S. December soybean crush rose by 7.56 percent m-o-m to 174.812 million bushels from 164.909 million bushels in November 2019, above market expectation. Crush of soybean in Dec was higher by 1.78 percent y-o-y compared to Dec 2018 figure of 171.759 million bushels. Soy oil stocks in U.S. at the end of Dec rose 21.34 percent m-o-m to 1.757 billion lbs compared to 1.448 billion lbs in end Nov 2019. Stocks of soy oil in end Dec was higher by 17.29 percent y-o-y compared to end Dec 2018, which was reported at 1.498 million lbs. Soy oil stocks was above trade expectation.
- According to China's General Administration of Customs (CNGOIC), China's December edible vegetable oils imports rose 14.6 percent m-o-m to 9.04 LT from 10.59 LT in November 2019. Imports in Dec was higher by 21.8 percent compared to Dec 2018 which was reported at 7.42 LT. Year to date imports of edible vegetable oil rose 51.5 percent to 95.33 lakh tons.
- According to China's General Administration of Customs (CNGOIC), China's Dec soybean imports rose 15.3 percent to 9.54 MMT from 8.28 MMT in Nov 2019. Imports in Dec are 66.80 percent higher than Dec 2018 import of 5.72 MMT. Year to date soybean imports rose 0.5 percent to 88.511 MMT.
- According to United States Department of Agriculture (USDA) Nov estimate, U.S 2019/20 ending stocks of soy oil estimate has been decreased to 1,446 million lbs from 1,525 million lbs in its earlier estimate. Opening stocks are increased to 1,776 million lbs from 1,710 million bushels in its earlier estimate. Production of soy oil in 2019/20 is reduced to 24,420 million lbs from 24,590 million lbs in its earlier estimate. Imports in 2019/20 are kept unchanged at 450 million lbs. Biodiesel use in 2019/20 is unchanged at 8,500 million lbs. Food, feed and other industrial use in 2019/20 is unchanged at 15,000 million lbs. Exports in 2019/20 are reduced to 1,700 million lbs from 1,725 million lbs in its earlier estimate. Average price range estimate of 2019/20 is hiked to 31.00 cents/lbs from 30.0 cents/lbs in its earlier estimate.
- The U.S. Department of Agriculture monthly supply and demand report for the month of Nov forecasts U.S. 2019/20 soybean stocks at 475 million bushels from 460 million bushels in its earlier estimate. Opening stocks in 2019/20 is unchanged at 913 million bushels. Soybean production is kept unchanged at 3,550 million bushels. U.S. soybean exports estimate are unchanged at 1,775 million bushels. Imports estimate is unchanged

20 million bushels. Crush in 2019/20 is hiked to 2,105 million bushels from 2,120 million bushels in its earlier estimate. Seed use in 2019/20 has been kept unchanged at 96 million bushels. Residual use is increased to 32 million bushels from 30 million bushels in its earlier estimate. Average price range in 2019/20 is kept unchanged at 9.00 cents/bushel.

- USDA WASDE highlights:- The U.S. season-average soybean price for 2019/20 is forecast at \$9.00 per bushel, up 15 cents in part reflecting stronger soybean oil prices. The soybean oil price forecast is raised 3 cents to 34.0 cents per pound. The soybean meal price forecast is reduced \$5.00 to \$305.00 per short ton.

**Price Outlook:** We expect refined soy oil (without GST) at Indore to stay in the range of Rs 880-960 per 10 Kg in the near term.

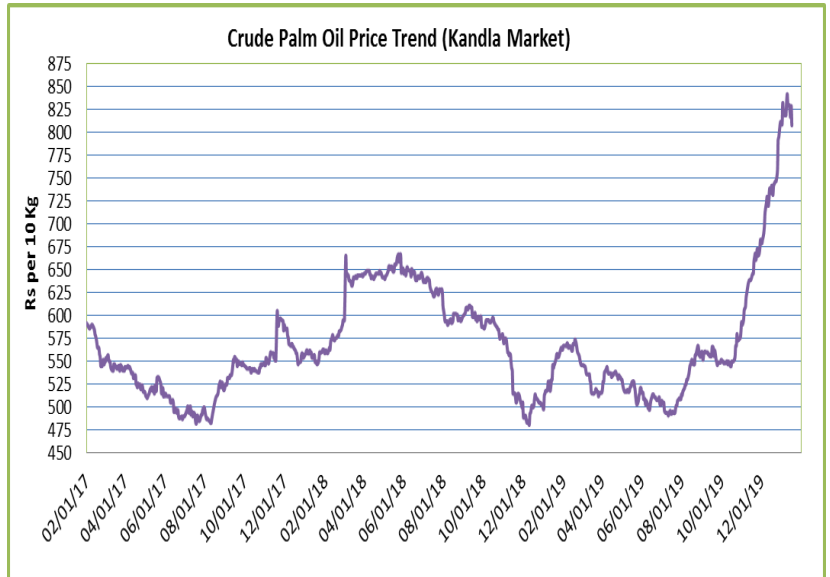


**Palm oil Fundamental Analysis and Outlook :-****Domestic Front**

- Crude palm oil (CPO) featured lower trend at its benchmark market at Kandla on fall in prices of CPO in international markets.

Prices of CPO fell less at high seas compared to CNF markets compared to last week indicating firm demand at high seas.

India placed RBD palmolein in import restricted list from free list which means that India has ended Open General License (OGL) of RBD palmolein. This



is a welcome step for Indian palm oil refiners, that were grappling under overcapacity, underutilization and rising debt. This will give incentive to Indian farmers to grow oilseeds. This step should have been taken decades earlier and Indian regulators waited for years to take such decision. This comes after India told importers and refiners to stop buying palm oil from Malaysia. This step has been taken to punish Malaysia from where India imports most of RBD palmolein. India was angry with Malaysia due to it raising Kashmir issue at UN. India on Dec 31 reduced import duty on imports of CPO by 2.5% and 5% on RBD palmolein which bring duty differential between CPO and RBD palmolein to 7.5 percent from 10 percent. But now RBD palmolein imports are restricted and CPO imports will surge going ahead.

India might give license to traders to import RBD palmolein directly from Indonesia in coming months provided Indonesia ramps up its production of RBD palmolein in coming months.

Both Malaysia and Indonesia has imposed export duty on exports of CPO will lead to lower exports of CPO from both countries as they are seeking to reduce CPO exports to benefit local refiners. This inverted tax structure might have hurt Indian refiners.

Traders are expected to cut buying at current international prices of CPO due to higher prices due weak supply position internationally due to fall in global production of palm oil, higher use of biodiesel will reduce production of CPO.

Data from cargo surveyors show fall in imports of palm oil by India in December from Malaysia. Further, fall in imports by India from Malaysia most likely.

Imports of palm oil by India fell in December compared to Dec 2018 while it was higher than Nov 2019. Imports of CPO fell compared to Dec 2019 while it was higher compared to Nov 2019. Fall in CPO imports came on high base y-o-y. RBD palmolein imports fell in Dec compared to Dec 2018. Fall in imports of RBD palmolein in Dec came despite low base y-o-y.

Imports of CPO rose in Dec m-o-m on to positive refining margins and rise in palm oil prices. Stocks of CPO rose at ports in India in Dec on rise in imports m-o-m. Rise in imports were higher than rise in stocks at ports indicating firm demand in Dec.



Imports of CPO will fall due to negative refining margins. CPO imports will rise after restricting RBD palmolein imports.

CPO import disparity rose during the week due to fall in prices of palm oil in Indian markets and is quoted at Rs 25-30 per 10 kg compared to Rs 20-25 per 10 kg last week.

Demand of CPO is weak at CNF markets as prices fell more at CNF markets compared to FOB markets compared to last week.

RBD palmolein closed higher at its benchmark market of Kandla on fall in prices of RBD palmolein in international markets.

RBD palmolein prices fell less at high seas compared to CNF markets indicating firm demand at high seas.

Import demand of RBD palmolein fell in Dec y-o-y. Fall y-o-y was due to hike in import duty on imports of RBD palmolein sourced from Malaysia leading to duty differential between RBD palmolein and CPO. Imports was low in Dec due to higher import duty on RBD palmolein, higher prices of RBD palmolein in international markets, negative import parity and negative refining margins leading to lower RBD palmolein imports.

Putting imports of RBD palmolein in restricted list will lead to lower RBD palmolein imports.

Import demand of RBD palmolein is expected to slow in oil year 2019-20 (Nov 2019-Oct 2020) after strong imports in oil year 2018-19.

Stocks of RBD palmolein at Indian ports have risen m-o-m on weak demand at ports. Port stocks rose despite fall in imports of RBD palmolein indicating weak demand in Dec.

Demand of RBD palmolein was weak compared to CPO at high seas as premium of RBD palmolein over CPO was at Rs 51 (Rs 55) per 10 kg compared to last week.

RBD palmolein import disparity decreased during the week on fall in prices of RBD palmolein in Indian markets and is quoted at disparity of Rs 0-5 per 10 kg compared to parity of 10-15 per 10 kg last week.

CDSO CNF premium over CPO CNF is at USD 60 (USD 59 last week) per 10 kg which is low and may decrease imports quantity of CPO. Premium of CDSO soy oil high seas over CPO high seas is at Rs. 61 (Rs 60 last week) per 10 Kg will decrease CPO demand at high seas. Premium of refined soy oil over RBD palmolein at Rs 50 (Rs 60 last week) per 10 kg. will decrease RBD palmolein demand. RBD palmolein discount over sunflower at CNF markets is at USD 72.5 (USD 35 last week) per ton which is low. Low premium of refined sunflower oil over RBD palmolein remain at Rs 65 (Rs 40) per 10 kg will decrease RBD palmolein imports. Values in brackets are figures of last week.

- According to ministry of commerce & industry notification no 39/2015-2020 dated 8th January, Indian has placed RBD palmolein imports to "Restricted" category from "Free", which means that India has restricted imports of RBD palmolein from all destinations and any import will be only possible after permission from DGFT. So, RBD palmolein is removed from Open General License. This comes amid India-Malaysia tensions on Malaysia raising Kashmir issue at UN which has prompted India to retaliate. India imports RBD palmolein mainly from Malaysia. This will mean that any permission on imports of RBD palmolein will be only from Indonesia. This step is welcome step of palm oil refining industry which is reeling under overcapacity and rising debt. This step will increase capacity utilization and a welcome step from India refining industry. Further, this step will support farmers by restricting imports will get more incentive to grow oilseeds.
- According to Ministry of Finance (MOF), Government of India Notification number 42/2019-Customs dated 31st December 2019, India decreased import duty on RBD palmolein imports by 5% and to 45% and 2.5% on CPO

to 37.5% under ASEAN agreement and the India-Malaysia Comprehensive Economic Cooperation Agreement (IMCECA). After the decrease import duty on imports of RBD palmolein stand at 49.5% after 10% cess and effective import duty on CPO stands at 41.25%. After this import duty reduction effective duty differential between CPO and RBD palmolein stands at 8.25% down from 11%. This reduction in import duty differential will increase import of refined palm oil which will be detrimental to Indian palm oil refining industry already reeling under overcapacity and debt. This will lead to idling of Indian palm oil refineries. Also, this will increase share of imports of refined palm oil in edible oils import basket.

- Palm oil import scenario – According to Solvent Extractors Association (SEA), palm oil imports in December fell 8.62 percent y-o-y to 7.42 lakh tons from 8.12 lakh tons in December 2018. Imports in the oil year 2019-20 (November 2019-December 2019) are reported lower by 6.32 percent y-o-y at 14.09 lakh tons compared to 15.04 in last oil year.

Crude Palm oil import scenario- According to Solvent Extractors Association (SEA), CPO Imports fell 5.67 percent y-o-y in December to 6.32 lakh tons from 6.70 lakh tons in December 2018. Imports in oil year 2019-20 (November 2019-December 2019) were reported lower by 5.40 percent y-o-y at 11.72 lakh tons compared to 12.39 lakh tons in last oil year.

RBD palmolein import scenario- RBD palmolein imports fell 22.48 percent y-o-y in December to 0.95 lakh tons from 1.31 lakh tons in December 2018. Imports in oil year 2019-20 (November 2019-December 2019) were reported lower by 10.04 percent y-o-y at 2.17 lakh tons compared to 2.39 lakh tons in last oil year.

- On the trade front, CNF CPO (Indonesian origin) at Indian port is quoted at USD 810 (USD 850) per ton for Jan delivery and Feb delivery is quoted at USD 810 (USD 850) per ton. Last month, CNF CPO Dec average price was at 735.80 per ton (USD 634.46 per ton in Nov 2019). Values in brackets are figures of last week.

Moreover, RBD palmolein (Malaysian origin) CNF at Indian port, offered at USD 800 (USD 845) per ton for Jan delivery and Feb delivery is quoted at USD 800 (USD 845) per ton. Last month, CIF RBD palmolein Dec average price was USD 762.16 (USD 664.57 in Nov 2019) per ton. Values in bracket depict last month quotes.

Ready lift CPO duty paid prices quoted at Rs 808 (Rs 845) per 10 Kg and Jan delivery duty paid is offered at Rs 808 (Rs 842) per 10 kg. Ready lift RBD palmolein is quoted at Rs 860 (Rs 900) per 10 kg as on Jan 17, 2020. Values in brackets are figures of last week.

- On the parity front, margins fell during this week due to fall in prices of palm products in international markets and appreciation of Rupee. Currently refiners lose USD 30-40/ton v/s loss of USD 0-5/ton (last month) margin in processing the imported CPO and imports of ready to use palmolein lose USD 20-25/ton v/s loss of USD 40-45/ton (last month) parity.

### International Front

Palm oil prices are likely to fall due to rise in end stocks of palm oil in Malaysia, slowdown of exports of palm oil from Malaysia,

However, slowdown in production of palm oil in Malaysia, higher use of palm oil in biodiesel in Indonesia and Malaysia, rise in crude oils prices and fall in competing oils prices will limit losses.

Palm oil stocks fell in Malaysia in Dec due to slowdown of production of palm oil and slow fall in exports of palm oil from the country. End stocks of palm oil fell to 2.0 MMT from 2.2 MMT. Production fell 13 percent in Dec and exports fell marginally in Dec.

End stocks of palm oil is not expected to fall further in Jan due to fall in exports of palm from Malaysia.

Production is expected to fall in Malaysia on seasonal downtrend of production. Production will fall due to adverse effect if haze, lower fertilizer use due to lower prices of palm oil, dry conditions in some areas and shift between peak production cycles. This may lead to lower production in coming months.

Exports of palm oil rose 2-6 percent in Malaysia in January due to firm demand from China, Pakistan and US.

Imports of palm oil rose to China in Jan due to demand ahead of Chinese New Year after which palm oil imports will fall to China in coming months.

Imports from China is expected to slow due to lower import of soybean by China in 2019 leading to higher supply of soy oil in the country leading to lower imports of palm oil. Further, supply of soy oil in the country will rise due to restocking of soybean to increase swine count which fell in 2019 by 41 percent higher supply of soy oil underpinning palm oil imports.

US-China trade settlement will increase soybean imports by China leading to lower palm oil imports by China, which is net negative for palm oil prices.

Exports of palm oil may weaken from Malaysia and Indonesia due to rise in prices of palm oil in international markets.

Palm oil imports by India from Malaysia will fall due to India placing restrictions on RBD palmolein imports especially to stop RBD palmolein imports from Malaysia due to standoff between both countries on Kashmir. Further, India has asked imports to stop purchasing palm oil from Malaysia to stop CPO imports from Malaysia. This will lead to surge in exports of palm oil from Indonesia to India.

Demand of palm oil is expected to fall due to rise in prices of palm oil, winter in Indian subcontinent, higher import duty on RBD palmolein compared to CPO, higher stocks of palm oil at Indian ports and India-Malaysia dispute on Kashmir.

Rising stocks of palm oil at Indian ports will decrease imports of palm oil in coming months.

Haze is one of the one reason for slowdown of production as fruits need oxygen to mature while dry condition in January and August in Indonesia has slowed fruit development. Further, lower fertilizer use due to low prices is blamed for lower production of palm oil. Production rise will slow in 2020 in Indonesia due to above conditions. Production in Malaysia is expected to fall in 2020 compared to 2019.

Further, production of palm oil will fall in Indonesia in coming months due to dry conditions in the country. Production of palm oil will slowdown in 2020 when standing fruits mature and yield will be lower. Production of palm oil will slow in 2020 due to dry conditions in 2019, haze and lower fertilizer use due to lower prices of palm oil. Production will rise lower than expected in 2020.

Exports of palm oil in 2019-20 will increase from Malaysia and Indonesia on higher demand from EU and China in 2020. India's palm oil imports will rise to 10-11 MMT due to lower soybean crop in the country. Exports to Rise in global demand will outpace rise in production in Malaysia and Indonesia in rest of 2019 and 2020, which will cut stock of palm by 3-4 MMT globally from present level of stocks at 17.5 MMT.

Exports of palm oil from Indonesia will increase in medium term especially to India after India restricting RBD palmolein imports and asking its traders to stop buying palm oil from Malaysia. Record use of palm oil in

biodiesel in Indonesia due to higher fuel standards will lead to lower stocks of palm oil in the country. This will decrease end stocks of palm oil in the country and supporting prices.

Production of palm oil is expected to rise 1.0 MMT in Indonesia in 2020 on higher produce from maturing plantation. Lower revision is due to dry conditions, lower fertilizer use and effect of haze.

Ringgit has appreciated and has reached 4.10/USD levels and is expected to cap in palm oil prices. This will make exports of palm oil uncompetitive compared to other oil and same oils with different destinations.

Malaysia hiked export duty on crude palm oil exports for the first time since August 2018 after international prices surged and palm oil end stocks fell in the country.

Indonesia imposed export levy on exports of palm products from the country due to rise in prices of palm oil and falling stocks of palm oil in the country. This will support palm oil prices in coming months.

Palm oil consumption in 2019 and 2020 will outstrip rise in production in both years mainly due to higher biodiesel demand from Indonesia and Malaysia and rise in import demand from India and China. Stocks of palm oil is expected to fall by 3-4 MMT globally in 2020 from present global stock of 17-18 MMT. This will support prices of palm oil in 2020.

Increasing use of biodiesel in Indonesia will reduce palm oil stocks in the country apart from higher exports to India. The country has mandated 30 percent bio content in all type of gasoline and has planned 40 percent bio content by 2020.

Malaysia has unveiled plans to double biodiesel production in the country and increase to 20 percent bio content in gasoline, in an effort to clear stocks of palm oil in the country. This will increase use of palm oil in biodiesel by 0.5 MMT. Palm oil based biodiesel production, will rise in Malaysia from 1.3 MMT to 1.6 MMT on higher biodiesel blending norms. This will cut palm oil end stocks in Malaysia.

RBD Palmolein Malaysia premium has decreased over Indonesia CPO will increase its demand. Export demand will rise from Malaysia due to decreasing premium of Malaysian palmolein over Indonesia CPO.

Competitive oils like RBD palmolein DALIAN and CBOT soy oil is expected to underpin palm oil prices.

Global crude oil prices are expected to rise on due to tension between US and Iran after US killed a Iran general in drone strike and Iran vowed to strike back thereby escalating tensions between both countries will support palm oil prices.

- According to cargo surveyor Societe Generale de Surveillance (SGS), Malaysia's Jan 1-15 palm oil exports rose 2.2 percent to 585,251 tons compared to 572,409 tons in corresponding period last month. Top buyers were European Union 167,601 tons (175,860 tons), Pakistan at 74,000 tons (41,000 tons), China at 68,310 tons (62,480 tons), United States at 58,485 tons (29,300 tons) and India at 18,500 tons (56,300 tons). Values in brackets are figures of corresponding period last month.
- According to cargo surveyor Intertek Testing Services (ITS), Malaysia's Jan 1-15 palm oil exports rose 5.8 percent to 580,421 tons compared to 548,780 tons in corresponding period last month. Top buyers were European Union 147,411 tons (168,880 tons), India & subcontinent 105,400 tons (52,500 tons) and China at 86,480 tons (101,130 tons). Values in brackets are figures of corresponding period last month.
- According to Malaysia Palm Oil Board (MPOB), Malaysia's December palm oil stocks fell 1099 percent to 20.07 lakh tons compared to 22.55 lakh tons in November 2019. Production of palm oil in Dec fell 13.27 percent to 13.34 lakh tons compared to 15.38 lakh tons in Nov 2019. Exports of palm oil in Dec fell 0.67 percent to 13.96 lakh tons compared to 14.06 lakh tons in Nov 2019. Imports of palm oil in Dec rose 64.73 percent to 1.23 lakh

tons compared to 0.75 lakh tons in Nov 2019. End stocks of palm oil fell more compared to trade expectation. Fall in stocks was due to lower production partially setoff by fall in exports of palm oil.

- According to Indonesia trade ministry, Indonesia will charge export levy on exports of crude palm oil (CPO) at USD 50 per ton from Jan. The reference price is set at USD 729.72 per ton for Jan. Indonesia will charge export duty on exports of CPO above USD 750 per ton and above the threshold levy of USD 570 per ton. USD 10-15 per ton levy will be charged when reference prices rise above threshold prices and will be USD 20-50 per ton if prices rise above USD 619 per ton.

According to Indonesia Palm Oil Association (GAPKI), exports of palm oil (CPO and PKO) from Indonesia fell 0.33 percent in September y-o-y to 2.98 MMT from 2.99 MMT in September 2018. Exports of palm oil (CPO and PKO) rose 18 percent m-o-m in Sep at 2.98 MMT compared to Aug 2019 at 2.53 MMT. Stocks of palm oil in Sep 2019 fell to 3.73 MMT from 3.8 MMT in Aug 2019, lower by 1.84 percent m-o-m.

- Policy review: According to Malaysia Palm Oil Board (MPOB), Malaysia hiked Feb crude palm oil export tax to 6.0 percent. Export duty of palm oil is calculated at reference price of 2,907.63 ringgit (USD 616.59) per ton. Tax is calculated above 2,250 ringgit starting from 4.5 percent to a maximum of 8.5 percent.

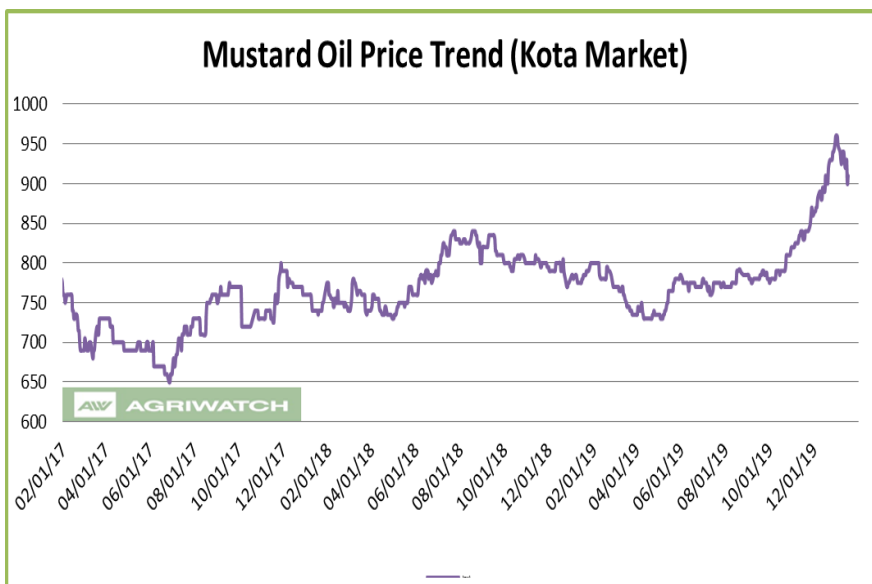
According to Indonesia trade ministry, Indonesia kept Dec crude palm oil export duty unchanged at zero. The reference price is set 14 percent higher from last month at USD 650.18 per ton, higher than lower threshold for export duty below USD 570 to calculate export levy. Indonesia taxes palm oil above trigger price of USD 750 per ton. Indonesia has kept crude palm oil export duty at zero since May 2017.

**.Price Outlook:** We expect CPO Kandla 5 percent (without GST) to stay in the range of Rs 770-840 per 10 Kg in the near term.

## Rapeseed oil Fundamental Review and Analysis-

### Domestic Front

- Mustard oil prices showed weak trend in benchmark market on weak demand. Arrivals of rapeseed fell last week. Prices fell on fall in soy oil and palm oil prices. Demand may firm on winters in North and East India. Rapeseed oil is moving out of Rajasthan at Rs 870-890 per 10 kg. There is parity in crush of rapeseed.



NAFED is disposing rapeseed stocks aggressively. However, despite sale it is expiated NAFED will be left with substantial stocks due to lower sale in last months as it was not selling below MSP. This slow sale of mustard has led to higher prices of mustard and supported mustard oil prices.

Various state governments have given their estimate of mustard sales from Nov 2019-Jan 2020. About 7.48-lakh tons sales estimate have been given by various state governments of rapeseed by Jan 2020. Total progressive purchase by NAFED have been 10.89 lakh tons with good stocks with traders and farmers. Total stocks after sale of mustard seed is 6.86 lakh tons. So, total sale has been 4.03 lakh tons apart from stocks with traders and farmers. Stock with NCDEX is 0.06 lakh tons.

Arrivals of rapeseed fell at various key markets during the week.

Sowing of rapeseed is over. Sowing is reported lower in UP, Assam, Bihar, MP, West Bengal and Gujarat. Sowing of rapeseed is lower due to higher production in last 2 years despite higher MSP of rapeseed.

Rapeseed crop in MY 2020-21 will be lower than last year due to higher production in last two years on lower yields after higher yields in last two years. Agriwatch estimated MY 2019-20 rapeseed crop to be 7.9 MMT due to higher rapeseed sown area and higher yields.

Lower crop of rapeseed in MY 2020-21 will support rapeseed and rapeseed oil prices.

Falling discount of soy oil prices to rapeseed kacchi ghani prices is likely to support rapeseed oil prices.

Low premium of Jaipur kacchi ghani rapeseed oil over refined soy oil in domestic market is at Rs 0-5 (Rs 0) per 10 Kg will support rapeseed oil prices.

Jaipur kacchi ghani rapeseed oil premium over RBD palmolein is at Rs 55 (Rs 50) per 10 kg which is low will support rapeseed oil prices.

There was no import of canola oil in December. Imports of canola oil is was zero in oil year 2019-20 (Nov-19-Dec-20 after weak oil year 2018-19 (Nov 2018-Oct 2019) indicating weak demand of canola oil. There has been zero import of rapeseed oil and in last 9 months, there has been no imports of canola oil in 8 months. There are negligible stocks of canola oil at ports.

Markets are expected to trade sideways to lower in coming days on weak demand and fall in competing oils.

- All India Rabi progressive sowing of rapeseed has reached 68.99 lakh hectares as on 17.01.2020 compared to 69.29 lakh hectares in corresponding period last year. Sowing is slow in state of UP, Assam, Orissa, Bihar, MP, West Bengal and Gujarat while it is higher in Rajasthan, Haryana, Chattisgarh and Jharkhand.
- Rapeseed oil import scenario- India imported zero rapeseed (Canola) oil in December 2019 v/s 0.13 lakh tons imports in December 2018. In the oil year 2019-20 (Nov 2019-Dec 2019) imports were 0.0 lakh tons compared to 0.25 lakh tons in last oil year.
- Currently, RM oil at Jaipur market, (expeller) is offered at Rs 898 (Rs 930) per 10 Kg, and at Kota market, it is offered at Rs 910 (Rs 940) per 10 kg as on Jan 17, 2020. Values in brackets are figures of last week.
- We expect RM seed oil prices to trade sideways to weak tone in the coming days.

**Price Outlook:** Rapeseed oil (without GST) prices in Kota may stay in the range of Rs 860-940 per 10 Kg.



**Sunflower oil Fundamental Review and Analysis:-****Domestic Front**

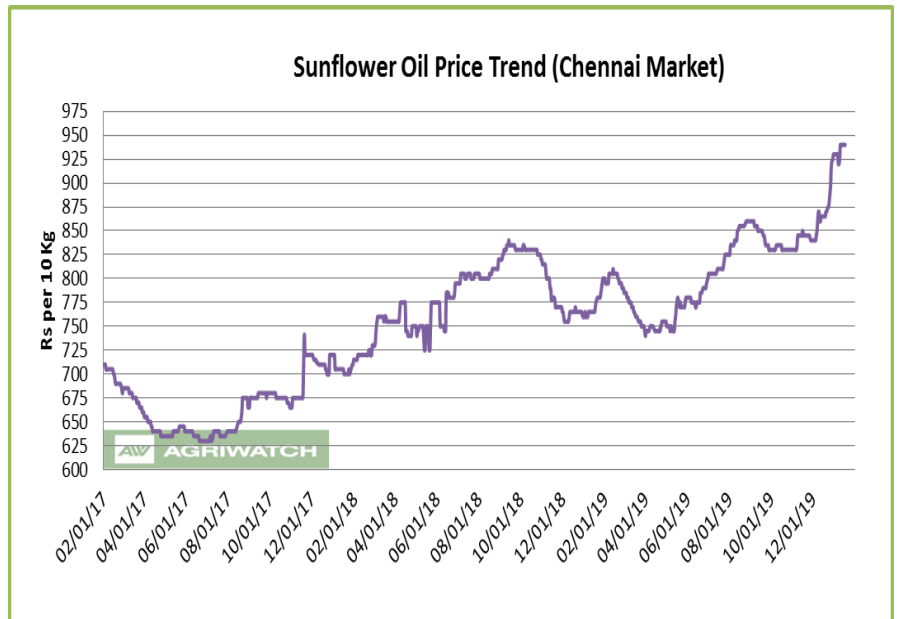
- Sunflower oil price traded lower during the week in Chennai on weak demand.

Sunflower oil price fell more at high seas compared to CNF markets indicating weak demand at high seas.

Prices of sunflower oil fell due to fall in palm oil and soy oil.

Demand may weaken due to higher prices of sunflower oil.

Import demand of sunflower oil is expected to rise due to low sunflower oil premium over palm oil and soy oil.



Imports of sunflower oil fell in December after strong imports in previous month and port stocks have remained fallen indicating destocking is taking place at ports. Prices of sunflower oil will be capped by higher stocks of sunflower oil at ports.

Stocks of sunflower oil fell less at ports in Dec m-o-m while imports fell more m-o-m indicating weak demand in Dec.

Imports may rise positive import parity and positive refining margins along with low premium of sunflower oil over soy oil and palm oil at CNF markets and firm domestic demand.

In domestic market, sunflower oil prices premium over soy oil is at Rs 20 (Rs -10 last week) per 10 kg, which indicates that sunflower oil prices have converged at domestic markets and CNF markets. At present premium of sunflower oil over soy oil at CNF markets is at USD 2.5 (USD -29 last week) per ton.

Sunflower oil premium over RBD palmolein at CNF India is at USD 72.5 (USD 35 last week) which will increase imports.

In domestic market refined sunflower oil (Chennai) premium over RBD palmolein (Chennai) is at Rs 65 (Rs 45) per 10 kg which is low will support sunflower oil in domestic market.

In domestic market, low groundnut oil premium over sunflower oil at Chennai market is at Rs 160 (Rs 230 last week) per 10 kg will cap sunflower oil prices.

Prices may be capped on seasonal downtrend of prices.

Sunflower harvest and yield, is higher than last year in current year. This is despite record sunflower crop in 2018-19. This will keep sunflower CNF prices capped in coming months.

Refiners purchase of crude sunflower oil from international markets will increase as CNF sunflower oil premium over CNF soybean oil and palm oil has fallen.

Prices of sunflower oil are expected to fall on weak demand.

- Sunflower oil imports scenario- According to Solvent Extractors Association (SEA), Sunflower oil imports fell 16.1 percent y-o-y in December to 1.98 lakh tons from 2.36 lakh tons in December 2018. Imports in oil year 2019-20 (November 2019-December 2019) were reported higher by 14.96 percent y-o-y at 4.61 lakh tons compared to 4.01 lakh tons in last oil year.
- All India Rabi progressive sowing of sunflower has reached 0.97 lakh hectares as on 17.01.2020 compared to 1.06 lakh hectares in corresponding period last year. Sowing is slow in state of Karnataka.
- On the trade front, CIF sunflower oil prices (Ukraine origin) at West coast of India quoted at USD 872.5 (USD 880) per ton for Jan delivery, Feb/Mar delivery is quoted at USD 887 (USD 880) per ton and AMJ delivery is quoted at USD 877.5 per ton. CNF sun oil (Ukraine origin) Dec monthly average was at USD 827.58 per ton compared to USD 766.96 per ton in Nov. Values in brackets are figures of last week.
- Prices are likely to stay in the range of USD 860-900 per ton in the near term. CNF Sunflower oil premium over CDSO is hovering remain at USD 2.5 (USD 29 last week) per ton for Jan delivery. CNF sunflower oil premium over RBD palmolein is hovering around USD 72.5 (USD 35) per ton.
- Currently, refined sunflower oil at Chennai market is offered at Rs 940 (Rs 940) per 10 Kg, and at Kandla/Mudra market, it is offered higher at Rs 925 (Rs 945) per 10 kg as on Jan 17, 2020. Values in brackets are figures of last week.
- We expect sunflower oil prices to trade sideways to weak tone in the coming days.

**Price Outlook:** Sunflower oil (without GST) prices in Chennai may stay in the range of Rs 900-960 per 10 Kg.

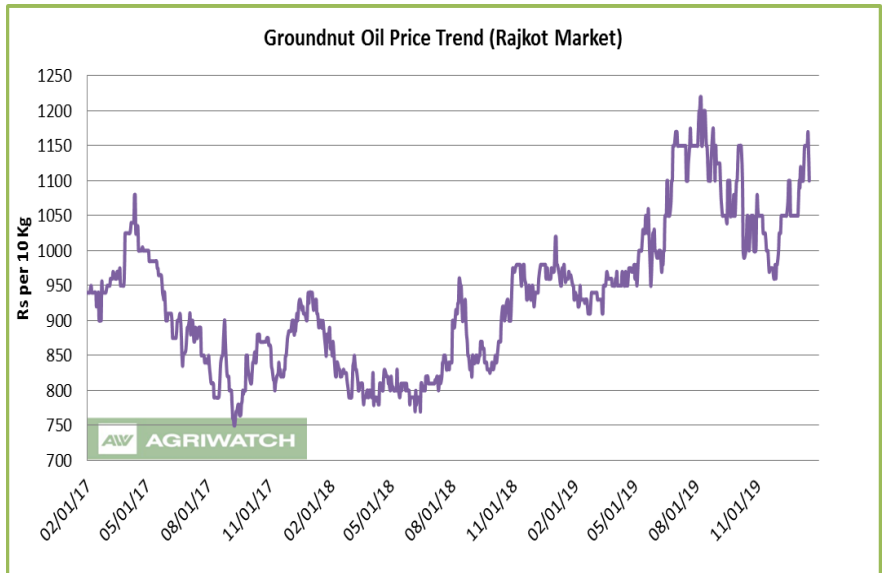
**Groundnut oil Fundamental Review and Analysis:-****Domestic Front**

- Groundnut oil prices featured weak trend in Rajkot on account of weak demand.

Prices of groundnut oil fell as peak demand season of groundnut oil in Gujarat, is over and demand will slow in coming months. This will decrease prices of groundnut oil in coming days.

Prices fell despite rise in groundnut prices indicating weak demand.

Prices may fall on fall in palm oil and sunflower oil prices.



Prices of groundnut oil may fall in rest of January as seasonal uptrend of demand in Gujarat is over. Demand of groundnut oil may fall due to rise in prices of groundnut oil.

Prices of groundnut oil may fall due to high volatility in its prices.

NAFED has procured 5.23 lakh tons of groundnut since the start of procurement.

NAFED stocks of K-18 and K-17 groundnut is 1.67 lakh tons at the end of sale of groundnut. So, with procurement of new season the total stocks with NAFED is 6.9 lakh tons.

Supply of groundnut oil decreased despite good crop of groundnut as groundnut prices offered in mandis are much lower than offered by NAFED due to which most of the groundnut is going towards NAFED has decreased supply of groundnut in the market leading to higher prices of groundnut oil.

Exports of groundnut had decreased due to rise in prices of groundnut leading to diversion of groundnut towards crushing weakening prices.

There is disparity in all quality of groundnut oil while most of the trade is in medium quality. Groundnut oil is going out of Gujarat at Rs 1100-1120 per 10 kg.

In South India, Rabi planting is progressing at a higher pace compared to corresponding period last year due to higher soil moisture and higher water supply in tanks.

In South India, prices fell on weak demand. Demand season of groundnut oil is over. Since the demand season is over, prices will remain moderated.

Groundnut oil prices are expected to fall on as peak demand season of groundnut oil in Gujarat is over.

- All India Rabi progressive sowing of groundnut as on 17.01.2020 has reached 4.54 lakh hectares compared to 4.20 lakh hectares in corresponding period last year. Sowing is higher than corresponding period last year in Andhra Pradesh, Telangana, and Karnataka while it is slow in Tamil Nadu and Orissa.
- On the price front, currently the groundnut oil prices in Rajkot is quoted at Rs 11,000 (Rs 11,500) per quintal and it was quoted at Rs 11,300 (Rs 11,700) per quintal in Chennai market on Jan 17, 2020. Values in brackets are figures of last week.



- Groundnut oil prices are likely to trade lower in the coming days.

**Price Outlook:**

Groundnut oil (without GST) in Rajkot market is likely to trade in the price band of Rs 1050-1200 per 10 Kg.

### Coconut Oil Fundamental Review and Analysis:- Domestic Front

- Firm price trend was seen in its benchmark market of Kangayam on firm demand.

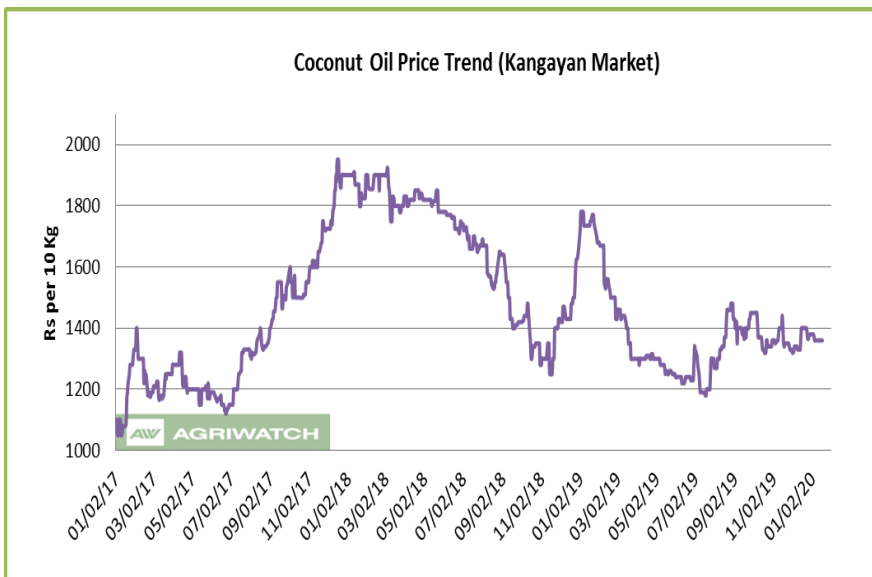
Prices of coconut oil rose on rise prices of copra.

Prices closed higher despite fall in palm oil prices indicating firm demand.

Retail demand has increased due to fall in prices of coconut oil.

In addition, demand will strengthen on firm demand at lower prices.

Prices may be capped on seasonal downtrend of prices.



Government is procuring coconut to support prices. Tamil Nadu government is procuring 50 thousand tons of copra procurement. However, supply of copra has improved due to higher rate of harvest of copra.

Demand from North India is weak.

Demand of domestic coconut oil is less due to higher imports of copra under advance authorization license where imports of copra are made from Indonesia and Philippines and coconut oil is exported. Therefore, domestic coconut oil exports are negligible.

In addition, coconut oil cake is imported from Indonesia, which is having 10-12 percent oil content compared to 6 percent oil content in India coconut oil cake. The oil from imported oilcake is refined, bleached, deodorized, and mixed into edible coconut oil despite it being non-edible, which makes prices of local coconut oil uncompetitive.

There has been surge in imports of desiccated coconut (DC) from Sri Lanka, which has adversely affected demand of coconut as it is used in various industrial applications and feed industry, prompting higher supply of coconut towards crushing, thereby increasing supply of coconut oil.

Stockists and retailers are not stocking, as the prices have not stabilized.

Corporate demand, which is one of the major contributors, is weak.

Traders and upcountry buyers are not stocking as they are not confident about prices.

Crushers have low stocks of coconut oil on weak demand.

Due to fall in prices of coconut oil, demand may shift to coconut oils from other oils. Fresh demand is expected at current levels.

However, price trend is biased towards downside.

Demand may firm due to low volatility in prices of coconut oil.

Consumers tend to increase demand when there is low volatility in prices.

Demand of coconut oil may rise due to firm demand. Household consumption will rise due to lower prices of coconut oil.

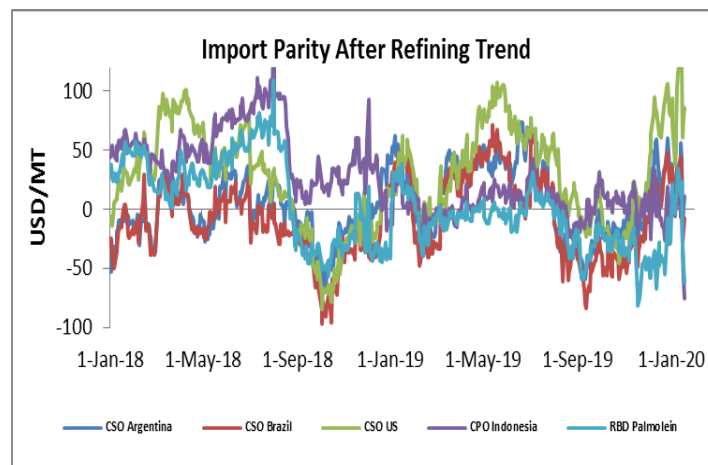
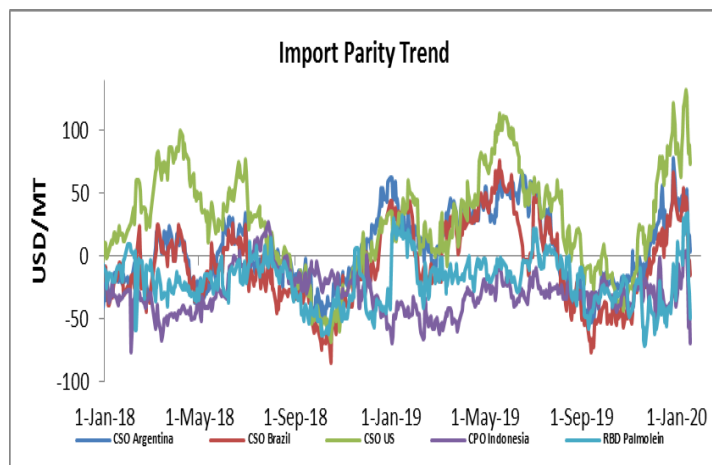
Coconut oil prices are expected to be firm in days ahead.

- On the price front, currently the coconut oil prices in Kochi is hovering remain at Rs 15,200 (Rs 15,100) per quintal, and was quoting Rs 13,600 (Rs 13,600) per quintal in Erode market on Jan 17, 2020.

**Price Outlook:** Coconut oil (without GST) prices in Erode may stay in the range of Rs 1300-1500 per 10 Kg.

### Import Parity Trend

#### Import Parity After Refining in US dollar per ton (Weekly Average)



	CSO Argentina	CSO Brazil	CSO US	CPO Indonesia	RBD Palmolein
<b>Dec 28-Jan 3, 2020</b>	35.88	27.40	81.20	-10.27	-30.82
<b>Jan 4-Jan 10, 2020</b>	18.79	14.76	75.39	-9.65	-30.31
<b>Jan 11-Jan 17, 2020</b>	18.96	3.70	95.07	-33.43	-21.97

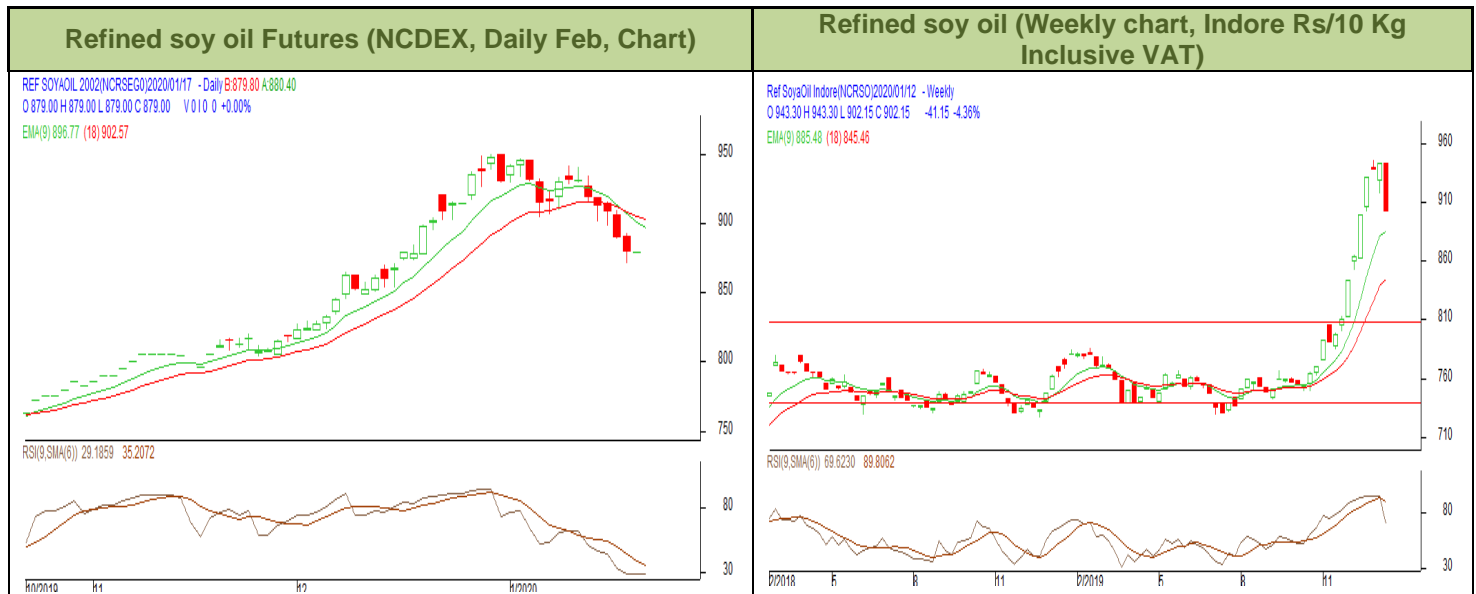
### Outlook:-

Refining margins parity rose for crude soy oil from Argentina due to rise in prices of soy oil in Indian markets. We expect soy oil refining margins parity to remain strong in medium term due to expectation of higher prices of soy oil in Indian markets.

Refining margins of CPO and RBD palmolein is in disparity lead to lower imports. We expected CPO parity to remain weak in medium term due to fall in prices of CPO Indian markets.



### Technical Analysis (Refined soy oil)



**Outlook – Refined soybean oil witnessed downtrend during the week in review and is likely to trade with a sideways to weak tone in the coming days.**

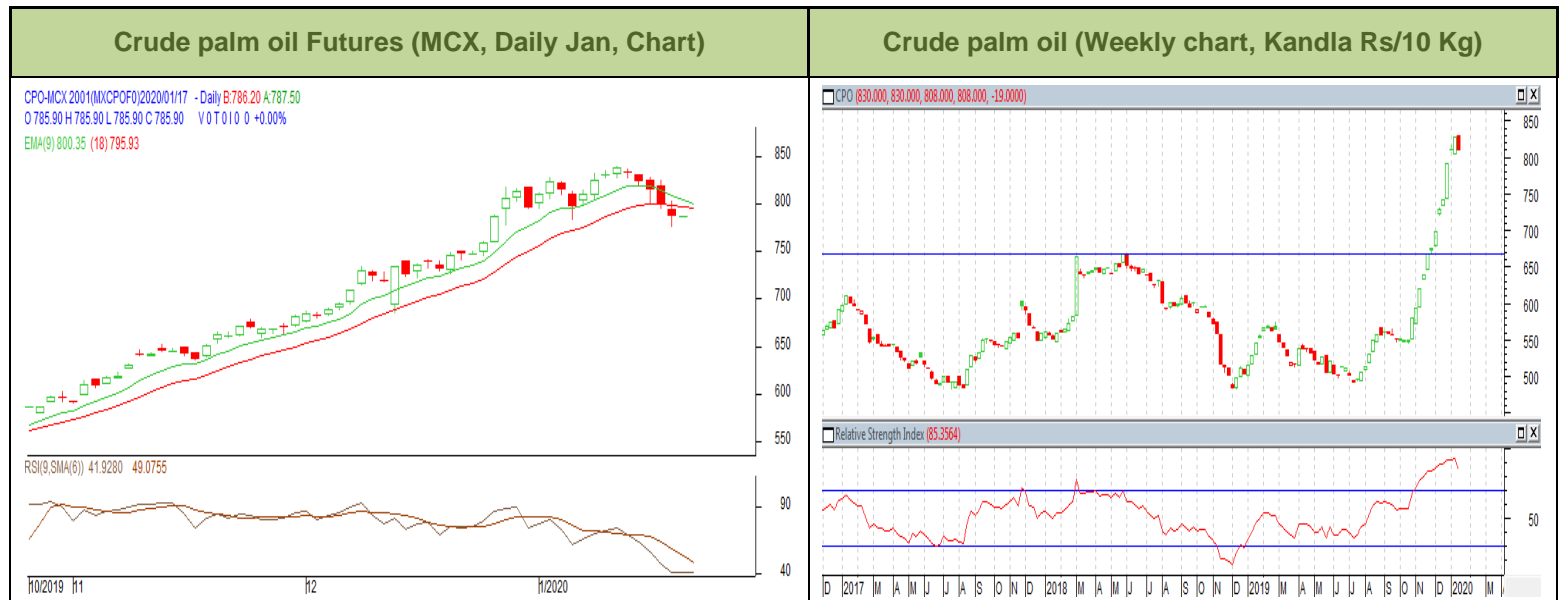
- Daily chart of refined soy oil at NCDEX depicts downtrend during the week in review. We expect prices to trade sideways to weak tone in the near term.
- Any close above 880 in weekly might take the prices below 860 levels.
- Expected price band for next week is 840-920 level in near to medium term. RSI and MACD is suggesting downtrend in the market.

**Strategy:** Market participants are advised to go short below 890 levels for a target of 875 and 870 with a stop loss at 900 on closing basis.

#### RSO NCDEX (February)

Support and Resistance				
S2	S1	PCP	R1	R2
860.00	880.00	884.40	900.00	920.00

**Spot Market outlook:** Refined soy oil Indore (without GST) is likely to stay in the range of Rs 880-960 per 10 Kg.

**Technical Analysis (Crude Palm oil)**


**Outlook - Prices show downtrend in prices during the week. We expect that CPO Jan contract may trade sideways to weak note.**

- Candlestick in weekly chart of crude palm oil at MCX depicts weak trend in the prices. We expect prices to trade with a sideways to weak note in the near term.
- Any close above 780 in weekly chart may bring the prices to 760 levels.
- Expected price band for next week is 760-840 level. RSI and MACD are suggesting downtrend in prices in the coming week.

**Strategy:** Market participants are advised to go short in CPO below 795 for a target of 780 and 775 with a stop loss at 805 on closing basis.

**CPO MCX (January)**

Support and Resistance				
S2	S1	PCP	R1	R2
760.00	780.00	789.30	800.00	820.00

**Spot Market outlook:** Crude palm oil (without GST) is likely to stay in the range of Rs 770-840 per 10 Kg.

**Veg. Oil Prices at Key Spot Markets**

Commodity	Centre	Prices(Per 10 Kg)		Change
		17-Jan-20	10-Jan-20	
Refined Soybean Oil	Indore	920	947	-27
	Indore (Soy Solvent Crude)	870	890	-20
	Mumbai	905	955	-50
	Mumbai (Soy Degum)	885	910	-25
	Kandla/Mundra	920	940	-20
	Kandla/Mundra (Soy Degum)	870	910	-40
	Kolkata	925	945	-20
	Delhi	945	985	-40
	Nagpur	922	948	-26
	Rajkot	890	930	-40
	Kota	910	940	-30
	Hyderabad	Unq	0	-
	Akola	925	950	-25
	Amrawati	925	948	-23
	Bundi	915	945	-30
	Jalna	923	935	-12
	Solapur	900	914	-14
	Dhule	923	937	-14
Palm Oil*	Kandla (Crude Palm Oil)	848	868	-20
	Kandla (RBD Palm oil)	887	908	-21
	Kandla RBD Pamolein	903	935	-32
	Kakinada (Crude Palm Oil)	830	861	-32
	Kakinada RBD Pamolein	914	935	-21
	Haldia Pamolein	919	929	-11
	Chennai RBD Pamolein	919	940	-21
	KPT (krishna patnam) Pamolein	914	935	-21
	Mumbai RBD Pamolein	914	950	-37
	Mangalore RBD Pamolein	919	945	-26
	Tuticorin (RBD Palmolein)	945	950	-5
	Delhi	925	975	-50
	Rajkot	898	924	-26
	Hyderabad	930	950	-20
	PFAD (Kandla)	578	593	-16
	Refined Palm Stearin (Kandla)	830	861	-32
	Superolien (Kandla)	924	982	-58
	Superolien (Mumbai)	945	987	-42
* inclusive of GST				
Refined Sunflower Oil	Chennai	940	940	Unch

	Mumbai	920	970	<b>-50</b>
	Mumbai(Expeller Oil)	880	890	<b>-10</b>
	Kandla (Ref.)	925	945	<b>-20</b>
	Hyderabad (Ref)	938	940	<b>-2</b>
	Latur (Expeller Oil)	880	873	<b>7</b>
	Chellakere (Expeller Oil)	885	878	<b>7</b>
	Erode (Expeller Oil)	Closed	975	<b>-</b>
<b>Groundnut Oil</b>	Rajkot	1100	1150	<b>-50</b>
	Chennai	1130	1170	<b>-40</b>
	Delhi	1100	1100	<b>Unch</b>
	Hyderabad *	1200	1200	<b>Unch</b>
	Mumbai	1140	1140	<b>Unch</b>
	Gondal	1090	1085	<b>5</b>
	Jamnagar	1090	1085	<b>5</b>
<b>Rapeseed Oil/Mustard Oil</b>	Jaipur (Expeller Oil)	898	930	<b>-32</b>
	Jaipur (Kacchi Ghani Oil)	915	954	<b>-39</b>
	Kota (Expeller Oil)	910	940	<b>-30</b>
	Kota (Kacchi Ghani Oil)	910	940	<b>-30</b>
	Neewai (Expeller Oil)	885	925	<b>-40</b>
	Neewai (Kacchi Ghani Oil)	900	942	<b>-42</b>
	Bharatpur (Kacchi Ghani Oil)	885	970	<b>-85</b>
	Sri-Ganga Nagar(Exp Oil)	890	930	<b>-40</b>
	Sri-Ganga Nagar (Kacchi Ghani Oil)	900	945	<b>-45</b>
	Mumbai (Expeller Oil)	930	950	<b>-20</b>
	Kolkata(Expeller Oil)	1040	1000	<b>40</b>
	New Delhi (Expeller Oil)	900	935	<b>-35</b>
	Hapur (Expeller Oil)	895	890	<b>5</b>
	Hapur (Kacchi Ghani Oil)	925	920	<b>5</b>
	Agra (Kacchi Ghani Oil)	890	975	<b>-85</b>
<b>Refined Cottonseed Oil</b>	Rajkot	880	915	<b>-35</b>
	Hyderabad	880	910	<b>-30</b>
	Mumbai	900	917	<b>-17</b>
	New Delhi	845	885	<b>-40</b>
<b>Coconut Oil</b>	Kangayan (Crude)	Closed	1360	<b>-</b>
	Cochin	1520	1510	<b>10</b>
<b>Sesame Oil</b>	New Delhi	1400	1450	<b>-50</b>
	Mumbai	Unq	0	<b>-</b>

Kardi	Mumbai	Unq	0	-
Rice Bran Oil (40%)	New Delhi	695	715	-20
Rice Bran Oil (4%)	Punjab	750	735	15
Malaysia Palmolein USD/MT	FOB	768	793	-25
	CNF India	800	845	-45
Indonesia CPO USD/MT	FOB	795	810	-15
	CNF India	810	850	-40
RBD Palm oil (Malaysia Origin USD/MT)	FOB	765	790	-25
RBD Palm Stearin (Malaysia Origin USD/MT)	FOB	765	778	-13
RBD Palm Kernel Oil (Malaysia Origin USD/MT)	FOB	1010	1090	-80
Palm Fatty Acid Distillate (Malaysia Origin USD/MT)	FOB	685	690	-5
Crude palm Kernel Oil India (USD/MT)	CNF India	Unq	1075	-
Ukraine Origin CSFO USD/MT Kandla	CIF	878	875	3
Rapeseed Oil Rotterdam Euro/MT	FOB	830	880	-50
Argentina FOB (\$/MT)		16-Jan-20	9-Jan-20	Change
Crude Soybean Oil Ship		800	830	-30
Refined Soy Oil (Bulk) Ship		828	859	-31
Sunflower Oil Ship		800	795	5
Cottonseed Oil Ship		780	810	-30
Refined Linseed Oil (Bulk) Ship		Unq	0	-
* indicates including GST				

\*\*\*\*\*

#### Disclaimer

The information and opinions contained in the document have been compiled from sources believed to be reliable. The company does not warrant its accuracy, completeness and correctness. Use of data and information contained in this report is at your own risk. This document is not, and should not be construed as, an offer to sell or solicitation to buy any commodities. This document may not be reproduced, distributed or published, in whole or in part, by any recipient hereof for any purpose without prior permission from the Company. IASL and its affiliates and/or their officers, directors and employees may have positions in any commodities mentioned in this document (or in any related investment) and may from time to time add to or dispose of any such commodities (or investment). Please see the detailed disclaimer at <http://www.agriwatch.com/disclaimer.php> 2019 Indian Agribusiness Systems Ltd.