

# Veg. Oil Weekly Research Report

## Contents

- ❖ Executive Summary
- ❖ Recommendations
- ❖ International Veg. Oil Market Summary
- ❖ Domestic Market Fundamentals
- ❖ Technical Analysis (Spot Market)
- ❖ Technical Analysis (Futures Market)
- ❖ Veg. Oil Prices at Key Spot Markets

**Executive Summary****Domestic Veg. Oil Market Summary**

*Edible oil prices featured mixed trend during this week in domestic market. CBOT soy oil and BMD palm oil rose during the week. Soy oil, palm oil, rapeseed oil and sunflower oil prices rose while groundnut oil and coconut oil prices closed in red.*

*On the currency front, Indian rupee is hovering near 75.50 against 75.56 previous week. Factors to watch in the coming weeks will be movement of Indian rupee against US dollar and crude oil prices. Rupee is expected to depreciate and crude oil prices will rise in near-term.*

*We expect soy oil and palm oil to rise on strong fundamentals.*

**Outlook:**

*Weekly Call -: In NCDEX, market participants are advised to go long above 805 levels for a target of 820 and 825 with a stop loss at 795 on closing basis. We expect refined soy oil at Indore (without GST) to stay in the range of Rs. 780-880 per 10 Kg. in the near term.*

*In MCX, market participants are advised to go long in CPO above 650 for a target of 675 and 680 with a stop loss at 640 on closing basis. We expect CPO Kandla 5 percent (without GST) to stay in the range of Rs 640-720 per 10 Kg in the near term.*

**International Veg. Oil Market Summary**

*On the international front, a=supply disruption in Argentina, demand at lower levels, opening of various countries of world, rise of soybean demand from China and rise in crude oil prices will support soy oil prices in coming days.*

*Expectation of slow rise in palm oil stocks in Malaysia, rise in exports of palm oil from Malaysia, fall in production of palm oil from Malaysia, firm demand of palm oil from China and India and rise in crude oil prices are expected to support CPO prices in near term.*

**Soy oil Fundamental Analysis and Outlook:-****Domestic Front**

- Soy oil featured firm sentiment in domestic markets in the week in review on rise in international prices of soy oil and rise in competing oils prices.

Soy oil supply in India is constrained due to lower crush of soybean due to weak poultry demand on coronavirus leading to higher stocks of soy meal with crushers led to lower supply of soy oil.

Supply disruption of soy oil due to

less water in Parana river in Argentina, demand at lower levels, firm demand of soy oil from many locations of world, higher purchase of soybean by China has led to rise in international prices of soy oil.

Demand of soy oil will rise due to opening of markets as India prepares to open in phases starting June 8.

Rise in palm oil prices due to firm demand will support soy oil price.

Domestic crushers are running at lower capacity despite supply of soybean has been restored due to opening of mandis. There is less demand of soy meal due to lower poultry use. There is no shortage of trucks to transport soybean and soy oil. However, vessels are discharging slowly at Indian ports due to port congestion.

There is no shortage of labor in refineries and no raw material shortage. Controls at state borders have been removed and trucks are not finding it difficult to cross-state borders.

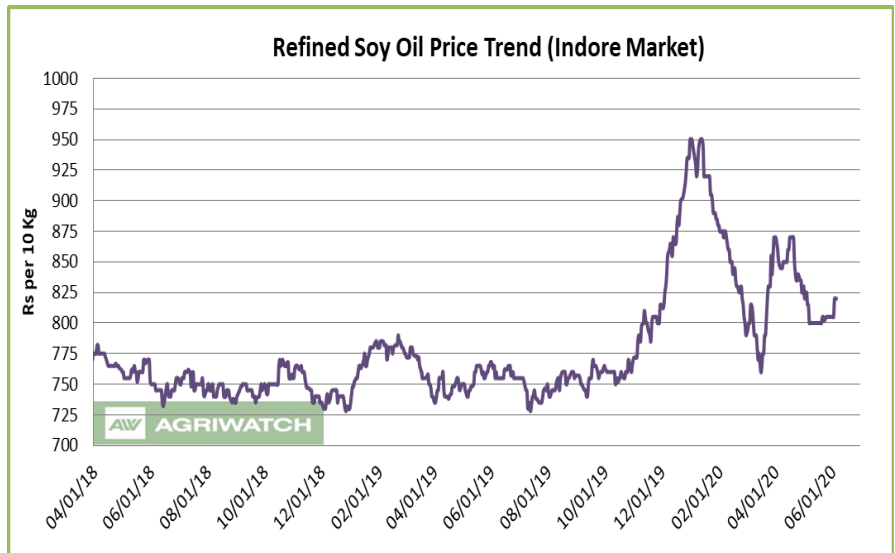
Import parity fell during the week on rise in prices of soy oil in international markets and is quoted at parity of 25-30 per 10 kg compared to parity of Rs 35-40 per 10 kg last week. Import demand are likely to rise due to parity in imports and positive refining margins.

Soy oil demand is weak at high seas as its prices rose less at high seas compared to CNF markets compared to last week.

Soy oil supply is weak at CNF markets, as prices rose more at CNF markets compare to FOB markets compared to last week.

Imports of soy oil fell in May 2020 compared to May 2019 while it was higher Apr 2020. Stocks at ports will be liquidated if supply from international markets come under pressure.

However, imports of soy oil is expected to remain rise in June citing improved in port congestion at Indian ports. CDSO is trading at low premium over RBD palmolein at high seas at Rs. 35 (Rs 35 last week) per 10 kg will increase CDSO import demand. CDSO premium over CPO at high seas is at Rs 95 (Rs 87) per 10 kg is high and underpin soy oil prices. Refined soy oil discount over rapeseed oil Rs 190 (Rs 180) per 10 kg is and refined soy oil discount over refined sunflower is at Rs 105 (Rs 115) per 10 kg is high and increase demand. Sunflower oil CNF premium over soy oil CNF is at USD 117 (USD 130) per ton is high may support soy oil prices. Values in brackets are figures of last month.



Refined soy oil premium over RBD palmolein is higher at Rs 80 (Rs 90 last week) per 10 Kg, which is high and may underpin soy oil prices in domestic markets. In USD terms, premium of CDSO CNF over CPO CNF was quoted at USD 107 (USD 90 last week) per ton for May delivery, which is high and decrease demand of CDSO at CNF markets compared to CPO CNF. Values in brackets are figures of last week.

- According to Solvent Extractors Association (SEA), India's May edible oil imports fell 4.014 percent y-o-y to 7.07 lakh tons from 11.81 lakh tons in May 2019. Palm oil imports in May fell 52.74 percent y-o-y to 3.87 lakh tons from 8.19 lakh tons in May 2019. CPO imports fell 15.9 percent in May y-o-y to 3.70 lakh tons from 4.40 lakh tons in May 2019. RBD palmolein imports fell by 95.68 percent in May y-o-y to 0.16 lakh tons from 3.71 lakh tons in May 2019. Soy oil imports fell 19.39 percent in May y-o-y to 1.87 lakh tons from 2.32 lakh tons in May 2019. Sunflower oil imports rose 1.5 percent y-o-y in May to 1.33 lakh tons from 1.33 lakh tons in May 2019. Rapeseed (canola) oil imports in May was zero compared to zero imports in May 2019. Sharp fall in imports in May was majorly led by palm oil especially RBD palmolein followed by soy oil. Fall in RBD palmolein imports were due to India restricting refined palm oil imports by cancelling all licenses.
- Soy oil import scenario – According to SEA, soy oil imports fell 19.39 percent y-o-y in May to 1.87 lakh tons from 2.32 lakh tons in May 2019. In the oil year 2019-20 (Nov 2019 -May 2020), imports of soy oil were 15.79 lakh tons compared to 14.69 lakh tons in corresponding period last oil year, higher by 7.49 percent compared to corresponding period last oil year.
- Imported crude soy oil CNF at West coast port is offered at USD 727 (USD 691) per ton for June delivery, July delivery is quoted at USD 716 (USD 686) per ton and Aug delivery is quoted at USD 707 per ton. Values in brackets are figures of last week. Last month, CNF CDSO May average price was USD 661.11 (USD 658.12 per ton in Apr 2020) per ton. Soy refined (Indore) is quoted at Rs 820 (Rs 800 last week) per 10 kg.
- On the parity front, margins fell during the week on rise in international price of soy oil, and we expect margins to remain firm in coming days. Currently, refiners fetch USD 35-40/ton v/s gain of USD 70-75/ton (last week) margin in processing the imported Soybean Oil (Argentina Origin).

### International Front

Soy oil prices are expected to be supported by supply disruption in Argentina the largest exporter of soy oil due to less water at Parana river from where 90 percent of soy oil takes place, demand at lower levels, opening of various economies of world including largest importer India, higher demand of soybean US soybean from China and rise in crude oil prices.

However, higher stocks of soybean in US, and good condition of soybean crop in US will cop soy oil prices.

Coronavirus has claimed more than 4000,000 lives across globe. The outbreak has affected more than 200 countries. US is the most affected country with more than 1.50 million cases and more than 100,000 deaths. US has blamed this outbreak on China and has vowed to punish China by hiking tariffs. This comes at a time when US-China trade settlement has started to show that China is buying agricultural goods in bulk.

Coronavirus lockdown is being lifted in various countries in the world including India. Many economies are opening their countries partially to save themselves from economic disaster after health disaster. However, agricultural services like harvesting, processing and transit are normal. India opened from June 8 gradually after

the the lockdown after more than 70 days of lockdown will increase demand of soy oil imports as domestic crushed soy oil is in short supply.

US FED kept interest rate to zero and has undertaken USD 2.3 trillion of quantitative easing program. US has announced USD 2.7 trillion stimulus package. India also cut interest rates two times to support growth and 20 lakh crore of stimulus has been announced. EU and Japan announced fiscal stimulus and their central banks have announced quantitative easing to support market. More measures from many government in from of fiscal support can be seen in coming days. Total more than USD 15 trillion of fiscal support is being given globally.

China has lifted lockup in almost all provinces and travel restriction have been removed. With lifting of lockdown and fiscal stimulus measures, Chinese economy is expected to pickup pace from next quarter when most of the world is still in partial lockdown. This has led to increase in meat consumption increasing demand of soybean in the country. However, lower swine count in China due to swine flu in 2019, which led to 50 percent drop in swine count led to lower demand of soybean by China.

US-China trade settlement has been applicable from Feb 15 and major purchase of US soybean has started in May. China is expected to buy 30 MMT of US soybean to refurbish stocks. China has purchased record meat from US at a time many plants are shutting down in US due to coronavirus.

There has been surge in exports of soybean from Brazil especially import demand from China. Brazil exported record soybeans in April and May is also expected to be strong.

USDA increased soybean import estimate of China at 96 MMT in 2020/21, 92 MMT in 2019/20 from 85 MMT in 2018/19.

Due to new crop harvest in Brazil, Brazilian soybean is quoted lower compared to US origin has led to surge in demand from Brazil.

Dry conditions during last phases of crop in Brazil and harvest has led to lowering of yields thereby reducing soybean crop of the country. USDA reduced soybean crop of the country to 124 MMT from 126 MMT making this year crop in Brazil to record in history.

USDA has hiked exports of soybean from Brazil to 84 MMT from 78.5 MMT on higher global demand especially demand from China.

Soybean harvest in Argentina harvest is over. Dry weather led to reduction in yields and will lead to lower soybean crop. USDA cut soybean production forecast of Argentina to 51 MMT from 52 MMT. Buenos Aires Grains exchange has cut soybean crop to 49.5 MMT from 54 MMT citing dry conditions.

There has been fall in water levels of Parana river in Argentina leading to delay of shipments of soybean and downstream shifting of loading due to less water levels. Ships are loading at lower capacity due to lower water levels. This has lead to shortage of soy products in global markets supporting prices and led soy oil basis of Argentina to surge from CBOT soy oil.

Soy oil stocks rose in US in April as reported by NOPA despite lower crush of soybean and lower domestic disappearance leading to higher supply of soy oil. Rise was more than trade estimate. This will cap global soy oil prices.

USDA increased soybean crop of US in 2020/21 on higher area and higher yields. Crop size is higher than 2019/20 crop by 16 percent. However, stocks of soybean is lower due to higher exports especially to China and improving US global share of soybean exports.

Soybean planting of soybean is progressing swiftly and is more than last year and 5-year average, indicating US farmers will plant higher soybean crop and area will be higher than estimated. Crop condition is reported to be good will increase yields.

Soy oil prices are expected to be supported by rise in crude oil prices on higher cut in global crude oil production especially Saudi and Russia.

- According to National Oilseed Processors Association (NOPA), U.S. April soybean crush fell by 5.30 percent m-o-m to 171.754 million bushels from 181.374 million bushels in March 2020, below market expectation. Crush of soybean in Apr was higher by 7.35 percent y-o-y compared to Apr 2019 figure of 159.990 million bushels. Soy oil stocks in U.S. at the end of Apr rose 11.16 percent m-o-m to 2.111 billion lbs compared to 1.899 billion lbs in end Mar 2020. Stocks of soy oil in end Apr was higher by 18.13 percent y-o-y compared to end Apr 2019, which was reported at 1.787 million lbs. Soy oil stocks was above trade expectation.
- According to United States Department of Agriculture (USDA) May estimate, U.S 2020/21 ending stocks of soy oil estimate has been reduced to 1,865 million lbs compared to 1,880 million lbs in 2019/20. Opening stocks are increase to 1,880 million lbs in 2020/21 from 1,775 million lbs in 2019/20. Production of soy oil in 2020/21 is raised to 24,685 million lbs from 24,480 million lbs in 2019/20. Imports in 2020/21 are raised to 400 million lbs compared to 375 million lbs in 2019/20. Biodiesel use in 2020/21 is raised to 8,000 million lbs compared to 7,500 million lbs in 2019/20. Food, feed and other industrial use in 2020/21 is reduced to 15,000 million lbs compared to 14,700 million lbs in 2019/20. Exports in 2020/21 are reduced to 2,100 million lbs compared to 2,550 million lbs in 2019/20. Average price range estimate of 2020/21 is raised to 29.0 cents/lbs from 28.5 cents/lbs in 2019/20.
- The U.S. Department of Agriculture monthly supply and demand report for the month of May forecasts U.S. 2020/21 soybean stocks at 405 million bushels compared to 580 million bushels in 2019/20. Opening stocks in 2020/21 is reduced to 580 million bushels compared to 909 million bushels in 2019/20. Soybean production in 2020/21 is raised to 4,125 million bushels from 3,557 million bushels in 2019/20. U.S. soybean exports estimate in 2020/21 are raised to 2,050 million bushels compared to 1,675 million bushels in 2019/20. Imports estimate in 2020/21 is unchanged 15 million bushels compared to 2019/20. Crush in 2020/21 is increased to 2,130 million bushels compared to 2,125 million bushels in 2019/20. Seed use in 2020/21 has been increased to 100 million bushels in 2020/21 from 97 million bushels in 2019/20. Residual use in 2020/21 is raised to 35 million bushels from 29 million bushels in 2019/20. Average price range in 2020/21 is reduced to 8.20 cents/bushel from 8.50 cents/bushel in 2019/20.
- USDA WASDE highlights:- The 2020/21 U.S. season-average soybean price is projected at \$8.20 per bushel, down 30 cents from 2019/20. Soybean meal prices are forecast at \$290 per short ton, down \$10.00 from 2019/20. Soybean oil prices are forecast at 29.0 cents per pound, up 0.5 cents from 2019/20.

**Price Outlook:** We expect refined soy oil (without GST) at Indore to stay in the range of Rs 780-880 per 10 Kg in the near term.

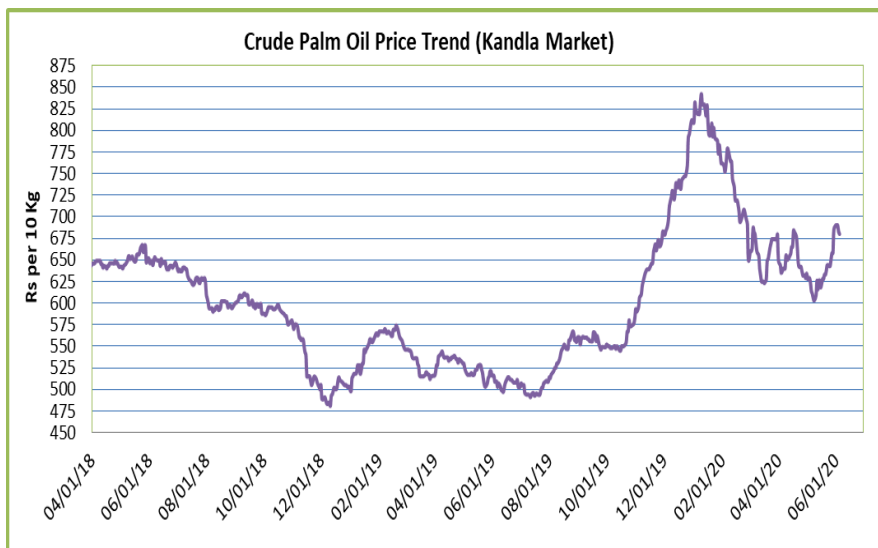
**Palm oil Fundamental Analysis and Outlook :-****Domestic Front**

- Crude palm oil (CPO) featured firm trend at its benchmark market at Kandla on firm demand and rise in prices of palm oil in international markets.

Demand of CPO rose due to demand at lower levels.

Palm oil vessels are discharging slowly at Indian ports due to port congestion.

Progressive opening of countries locked globally will bring back lost demand of Malaysia and Indonesia's palm oil.



Refineries are running at 50-60 percent capacity due to weak demand. There is no shortage of trucks and trucks are now not facing hurdles to cross borders as state borders have been opened.

Prices of RBD palmolein rose due to demand of RBD palmolein at lower levels in Indian markets. However, demand will stay moderated as it is mainly used in street food, joints and restaurant chains and its demand is weak. However, due to progressive opening of India demand will increase in coming days.

Prices of CPO rose less at high seas compared to CNF markets compared to last week indicating weak demand at high seas.

Indian restricted refined palm oil imports and cancelled all the licenses issued or in process of issuance. This has been a good news for Indian refiners, which were suffering with unutilized capacity and in debt. However, India purchased 2-3 lakh tons of CPO from Malaysia for June and July delivery due to Malaysia reducing CPO export duty to zero and tempering of India-Malaysia trade relations. This comes after Malaysia made major purchases of Indian sugar and rice. Further, Malaysia's CPO was trading at discount over Indonesia's CPO. Both countries vowed to improve ties as Mahatir Mohammad government has been removed in Malaysia.

India has made it clear by its actions that it is not interested in any way to import refined palm oil from international markets and any country offering CPO at lower prices will be given preference.

Malaysia has removed export duty on exports of CPO will lead to higher exports of CPO from Malaysia as they are seeking to reduce palm oil stocks in the country.

Traders are expected increase buying at current international prices of CPO to secure supplies and benefit once prices rise. Malaysia and Indonesia will try to ship maximum shipments at these prices to decrease stocks.

Data from cargo surveyors show rise in imports of palm oil by India in May from Malaysia.

Imports of palm oil by India fell in May compared to May 2019 and Apr 2020. Imports of CPO fell compared to May 2019 and Apr 2020. Fall in CPO imports came on high base y-o-y. However, imports of palm oil fell mainly due to fall in RBD palmolein imports that fell by more than 90 percent.



Imports of palm oil will remain rise from June m-o-m due to rise in demand, removal of lockdown progressively in India, resolution of supply bottlenecks faced in importing, processing and transit of palm oil. Further, import demand will stay improve normalcy is being restored in India.

Import parity of CPO and refining margins are positive. CPO imports will rise after restricting RBD palmolein imports.

CPO import parity is trading at parity of Rs 25-30 per 10 kg this week compared to last week disparity at Rs 25-30 per 10 kg.

Demand of CPO is weak at CNF markets as prices rose less at CNF markets compared to FOB markets compared to last week.

RBD palmolein closed higher at its benchmark market of Kandla on rise in prices of RBD palmolein in international markets. Supply has improved due to supply chain problems resolved in India as quoted above.

Palmolein demand will rise as it is mostly used in street food, joints and restaurant chains, which are opening gradually due to opening from lockdown.

RBD palmolein prices rose less at high seas and CNF markets indicating weak demand at high seas.

RBD palmolein imports fell 90 percent in May compared to last year. RBD palmolein imports fell in May compared to May 2019 and Apr 2020. Fall in imports of RBD palmolein in May came on high base y-o-y. Fall y-o-y was due to restricting RBD palmolein imports by India and weak demand due to lockdown.

Putting imports of RBD palmolein in restricted list will lead to lower RBD palmolein imports.

Import demand of palm oil is expected to slow in oil year 2019-20 (Nov 2019-Oct 2020) due to coronavirus closures after strong imports in oil year 2018-19.

Port stocks of palm oil is expected to fall as imports are slow.

Demand of CPO was weak compared to RBD palmolein at high seas as premium of RBD palmolein over CPO was at Rs 60 (Rs 52) per 10 kg compared to last week.

CDSO CNF premium over CPO CNF is at USD 103 (USD 98 last week) per 10 kg which is high and may increase imports quantity of CPO. Premium of CDSO soy oil high seas over CPO high seas is at Rs. 95 (Rs 87 last week) per 10 Kg will increase CPO demand at high seas. Premium of refined soy oil over RBD palmolein at Rs 80 (Rs 80 last week) per 10 kg. will increase RBD palmolein demand. RBD palmolein discount over sunflower at CNF markets is at USD 197.5 (USD 210 last week) per ton which is high. Premium of refined sunflower oil over RBD palmolein is at Rs 185 (Rs 205) per 10 kg. Values in brackets are figures of last week.

Prices of palm oil will rise going ahead on firm demand.

- As per Notification Number 2/2020-21 dated 13, April 2020, issued by Ministry of commerce and Industry, India has imposed more restriction on imports of RBD palmolein. With respect to notification number 39/2015-20 dated 8th Jan 2020 has been amended for the import policy of refined palm oil to “restricted” from “Free”. Further, more conditions have been imposed for palm oil imports as mentioned below:
  - i. The applications for import authorization should be accompanied with prepurchase agreement and details of the import of the above items for past three years.
  - ii. Validity period of import licenses/authorizations for refined palm oil will be 06 months in place of usual 18 months.
  - iii. Total non-utilization of import authorization by the applicant will lead to disqualification of the importer from getting any further license for these items in future.



iv. Customs will be required to diligently enforce the Rules of Origin criteria for import of these items originating from Nepal and Bangladesh.

This issues with the approval of competent Authority.

- India has contracted to purchase 2-3 lakh tons of crude palm oil (CPO) from Malaysia for June and July delivery. This comes after Malaysia reduced its CPO palm oil export duty to zero and India restricting refined palm oil imports by cancelling all the 29 licenses. India and Malaysia relations were strained for last some months when Malaysia raised Kashmir issue at UN. This led Indian government to restrict refined palm oil imports and advising importers not to purchase from Malaysia. In recent times Malaysia has purchased sugar, rice and buffalo meat in bulk from India to decrease tensions between both countries. Malaysian Prime Minister Mahatir Mohammad was ousted from power in March and since then new regime has vowed to reverse the policy of Mahatir Mohammad to reduced tensions.
- Palm oil import scenario – According to Solvent Extractors Association (SEA), palm oil imports in May fell 52.74 percent y-o-y to 3.87 lakh tons from 8.19 lakh tons in May 2019. Imports in the oil year 2019-20 (November 2019-May 2020) are reported lower by 32.34 percent y-o-y at 36.53 lakh tons compared to 53.99 in last oil year.

Crude Palm oil import scenario- According to Solvent Extractors Association (SEA), CPO Imports in fell 15.9 percent y-o-y in May to 3.7 lakh tons from 4.4 lakh tons in May 2019. Imports in oil year 2019-20 (November 2019-May 2019) were reported lower by 14.4 percent y-o-y at 32.75 lakh tons compared to 38.26 lakh tons in last oil year.

RBD palmolein import scenario- RBD palmolein imports fell 95.68 percent y-o-y in May to 0.16 lakh tons from 3.71 lakh tons in May 2019. Imports in oil year 2019-20 (November 2019-May 2020) were reported lower by 75.99 percent y-o-y at 3.77 lakh tons compared to 15.7 lakh tons in last oil year.

- On the trade front, CNF CPO (Indonesian origin) at Indian port is quoted at USD 620 (USD 600) per ton for June delivery and July delivery is quoted at USD 615 per ton. Last month, CNF CPO May average price was at 558.57 per ton (USD 591.48 per ton in Apr 2020). Values in brackets are figures of last week.

Moreover, RBD palmolein (Malaysian origin) CNF at Indian port, offered at USD 630 (USD 610) per ton for June delivery and July delivery is quoted at USD 625 per ton. Last month, CIF RBD palmolein May average price was USD 567.80 (USD 606.84 in Apr 2019) per ton. Values in bracket depict last month quotes.

Ready lift CPO duty paid prices quoted at Rs 683 (Rs 663) per 10 Kg and May delivery duty paid is offered at Rs 675 (Rs 653) per 10 kg. Ready lift RBD palmolein is quoted at Rs 740 (Rs 715) per 10 kg as on June 5, 2020. Values in brackets are figures of last week.

- On the parity front, margins rose during this week due to rise in prices of palm products in Indian markets. Currently refiners fetch USD 70-75/ton v/s gain of USD 65-70/ton (last week) margin in processing the imported CPO and imports of ready to use palmolein fetch USD 70-75/ton v/s gain of USD 80-85/ton (last week) parity.

### International Front

Palm oil prices are likely to rise due to demand at lower levels, higher global demand of palm oil, higher demand of palm oil from India and China, expectation of slow rise in end stocks of palm oil in Malaysia, slow rise of production of palm oil in Malaysia, rise in crude oil prices and gradual opening of many countries after lockdown.

Palm oil stocks are expected to rise more in May in Malaysia but at a slower pace on low domestic demand of palm oil in Malaysia, fall in production of palm oil, amid rise in exports of palm oil from Malaysia.

Palm oil production is expected to fall in Malaysia in May due to higher seasonal production in April so May production will be lower than April.

Southern Peninsular Palm Oil Millers Association of Malaysia has estimated that production of palm oil in Malaysia in May 1-25 is expected to be 6 percent lower than April indication that production of Malaysia will end the month of May in red. Earlier, Malaysian palm oil Association estimated palm oil production to rise 11.8 percent in May in Malaysia.

Palm oil global demand is expected to rise in coming weeks on firm demand on opening of various countries after lockdown.

Exports of palm oil rose 5 percent in Malaysia in May due to firm demand from China and India.

However, demand of palm oil is lost for Ramadan as most of the Muslim world is closed due to coronavirus.

Opening of China for trade has benefited palm oil exports from Malaysia, as it has started to stock palm oil after closure of Chinese provinces to tackle coronavirus. China are taking advantage of lower prices of palm oil to stock. Further, US-China tension over coronavirus will lead to higher demand of palm oil in coming months.

Palm oil demand by India from Malaysia has increased in May and will rise in June and July due to Malaysia bringing down CPO export duty to zero, tempering of Malaysia-India relations and lower supply of palm oil in India due to months of low imports of palm oil. Further, if Malaysian CPO shipments trade at discount to Indonesian shipments exports will flow to India.

However, palm oil imports by India will rise from June lockdown is gradually lifted. Congestion at Indian ports has led to slow discharge of vessels. Supply constraints like labor shortage and truck shortage have been resolved.

Palm oil demand in India is mainly driven by street food, joints and restaurant chains will rise due to gradual opening of lockdown will lead to rise in palm oil import demand.

Prices of palm oil will be expected to be supported by demand and lower levels as prices are down more than 25 percent in 2020 stroking fresh demand in coming days. Palm oil discount has increased over various oils may support palm oil prices.

Further, production of palm oil will fall in Indonesia in coming months due to dry conditions in the country. Production of palm oil will fall in 2020 when standing fruits mature and yield will be lower. Production of palm oil will fall in 2020 due to dry conditions in 2019.

India's palm oil imports will come down below last year level of 9-10 MMT on coronavirus reasons despite lower soybean crop in the country on lower demand of palm oil by the country.

Global demand will fall short of production in Malaysia and Indonesia in 2020, which will add stock of palm by 3-4 MMT globally from present level of stocks at 17 MMT.

Exports of palm oil from Indonesia will increase in medium term due to India restricting refined palm oil imports.

Malaysia decreased export duty on crude palm oil exports to zero and keep it at zero until Dec 2020 as international prices and stocks rose will support exports by tune of 1 MMT.

Indonesia removed export taxes on exports of CPO from the country due to fall in prices of palm oil and falling stocks of palm oil in the country. However, Indonesia increased palm oil levy by USD 5 to fund its biodiesel program after 2020.

Palm oil consumption in 2020 will fall short of production due to lower global consumption demand due to COVID-19 on lower import demand from India. Stocks of palm oil is expected to rise globally in 2020 from present global stock of 17-18 MMT. This will keep palm oil prices in pressure in 2020.

Use of biodiesel in Malaysia will stay elevated in 2020. Malaysia has said that it will continue with its biodiesel policy from Sep and Indonesia will continue is B30 biodiesel program despite lower crude oil prices. This will increase use of palm oil in biodiesel. Palm oil based biodiesel production will stay rise in Malaysia to 1.6 MMT from 1.3 MMT in 2021. This will cut palm oil end stocks in Malaysia.

Indonesia has stuck with its biodiesel program despite fall in crude oil prices. The country has mandated 30 percent bio content in all type of gasoline and has planned 40 percent bio content by 2021.

CPO Malaysia is trading at discount over Indonesia CPO will increase its demand from Malaysia.

Competitive oils like RBD palmolein DALIAN and CBOT soy oil is expected to support palm oil prices.

Palm oil prices are supported by rise in crude oil prices due to lower rise in supplies and Saudi and Russia vowing to cut higher amount of crude oil production to rebalance global crude oil markets.

- According to cargo surveyor Intertek Testing Services (ITS), Malaysia's May palm oil exports rose 7.0 percent to 1,256,395 tons compared to 1,174,285 tons last month. Top buyers were European Union 269,125 tons (375,350 tons), China at 233,015 tons (207,530 tons) and India & subcontinent 197,600 tons (87,250 tons). Values in brackets are figures of last month.
- Indonesia increased palm oil export levy by USD 5 per ton to finance it B30 biodiesel mandate. Indonesia is going to distribute USD 187 million for its B30 program. Indonesia Estate Fund has not got enough funds to fund program after 2020. This fund subsidizes producers of biodiesel with subsidies to fund gap between diesel fuel and biodiesel. Indonesia ambitious biodiesel mandate intends to reduce crude oil imports by increasing consumption of surplus palm oil production. Indonesia currently collects USD 50 per ton export levy on exports of crude palm oil if prices rise above USD 619 per ton.
- According to Malaysian Palm Oil Council (MPOC), production of crude palm oil production will fall by 1.0 percent in 2020 to 19.7 MMT. Dry weather in 2019 and lockdown of the country lead to fall in production. Less fertilizer use in 2019 due to low palm oil prices and dry weather in mid-2019 lead to fall in yields. Also, temporary halt to production on coronavirus in six districts in Sabah province is expected to lower production. Lockdown led to lower harvest, milling and labor shortage lading to supply chain problems and limited palm oil production. Palm oil stocks at the end of 2020 is expected to fall to 1.9 MMT compared to 2.0 MMT at the end of 2019. Palm oil global demand has fallen due to coronavirus leading to lockdown of 50 percent of global population.
- According to Indonesia Palm Oil Association (GAPKI), exports of palm oil (CPO and PKO), biodiesel and oleochemical exports from Indonesia fell 2.16 percent in Mar 2020 y-o-y to 2.72 MMT from 2.78 MMT in Mar 2019. Exports rose by 11.02 percent in Mar m-o-m to 2.72 MMT from 2.45 MMT in Feb 2020. Stocks of palm oil at the end of Mar was 3.42 MMT compared to Feb 2020 figure of 4.08 MMT, down 16.18 percent m-o-m.

- According to Malaysia Palm Oil Board (MPOB), Malaysia's March palm oil stocks rose 1.67 percent to 17.29 lakh tons compared to 17.00 lakh tons in Feb 2020. Production of palm oil in Mar rose 8.8 percent to 13.97 lakh tons compared to 12.89 lakh tons in Feb 2020. Exports of palm oil in Mar rose 9.15 percent to 11.81 lakh tons compared to 10.82 lakh tons in Feb 2020. Imports of palm oil in Mar rose 12.77 percent to 0.48 lakh tons compared to 0.29 lakh tons in Feb 2020. End stocks of palm oil rose more compared to trade expectation.
- Policy review: Malaysian PM presented economic stimulus plan in Malaysian parliament, crude palm oil exports will be not be taxed in 2020. This will give boost to exports of palm oil struggling under rise in palm oil stocks. It is estimated that total of 1.0 MMT of extra shipments will be done by Malaysia in second half of 2020.

According to Indonesia trade ministry, Indonesia will not charge export duty on crude palm oil for June. Reference prices of June was set at USD 568.94 per ton compared to USD 635.15 per ton last month, below threshold price of USD 750 per ton. Export duty on CPO was brought down to zero ton in April due to fall in threshold price of USD 750 per ton. Indonesia charges export levy on CPO above USD 570 per ton. Earlier in the month Indonesia increased export levy by USD 5 per ton to fund ambitious biodiesel program after 2020.

**Price Outlook:** We expect CPO Kandla 5 percent (without GST) to stay in the range of Rs 640-720 per 10 Kg in the near term.

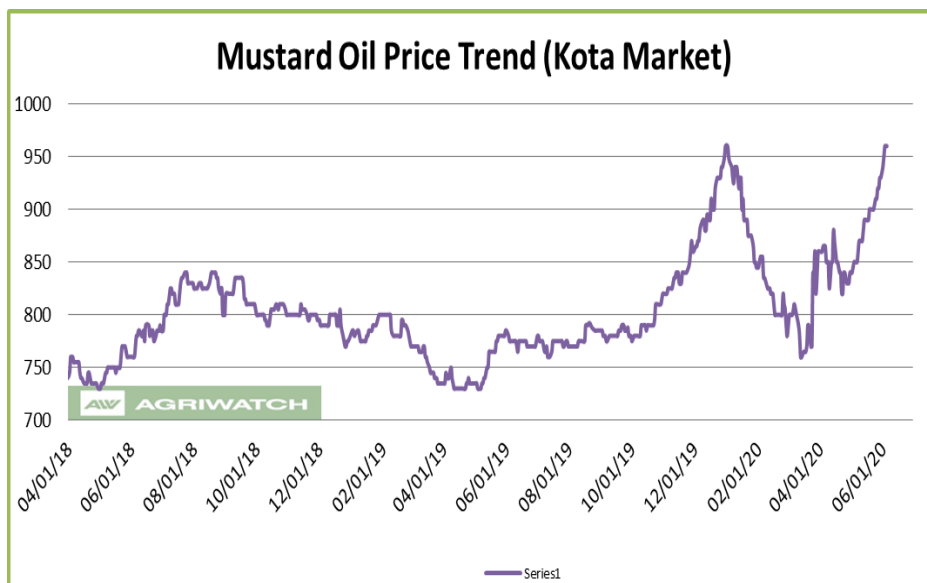
## Rapeseed oil Fundamental Review and Analysis-

### Domestic Front

- Mustard oil prices showed firm trend in benchmark market on firm demand. Arrivals of rapeseed rose at in various mandis in India during the week.

Plants are running at full capacity and supplies of rapeseed are coming to plant in adequate quantity.

Plants are not facing labor shortage. Transport is normal as there is no shortage of



truck drivers. Loaded trucks are not facing problems at state borders as it had been opened since June 1.

Prices rose on seasonal uptrend of prices. Prices rose on rise in rapeseed prices. Prices rose on rise in palm oil and soy oil prices.

Demand of rapeseed oil is firm due to stocking. In retail markets stocks of rapeseed oil is firm and consumers are consuming more rapeseed oil as it is mainly used in home food and most of the country is in lockdown increasing demand. Moreover, demand of rapeseed rose as it is considered as immunity booster has supported prices.

There is parity in crush of rapeseed.

NAFED is procuring rapeseed since 15 April for the MY 2020-21 to support market. Total progressive purchase has been 7.10 lakh tons and majority of the procurement is in Haryana and Rajasthan with progressive purchase of 3.09 lakh tons and 2.64 lakh tons respectively.

Total stocks after sale of mustard seed in MY 2019-20 is 3.30 lakh tons. Therefore, total stocks of rapeseed with NAFED stands at 10.40 lakh tons.

Arrivals of rapeseed rose at various key markets during the week. Better crush margins encouraged mills to crush more last week increased arrivals. Arrivals will slow going ahead.

COOIT estimated 77 lakh tons of rapeseed crop in MY 2020-21 compared to crop of 75 lakh tons last year. In the second advanced estimate rapeseed crop has been estimated at 91.13 lakh tons compared to 92.56 lakh tons last year.

Agriwatch estimated rapeseed crop last year at 79 lakh tons and rapeseed crop was below 75 lakh tons.

Rapeseed crop in MY 2020-21 was lower than last year due to lower area and lower yield. Yield was lower due to lack of sunny days in growth phase. Seed size and seed numbers were lower leading to lower yields in many states. In addition, yield fell due to rains and hail before harvest.

Lower crop of rapeseed in MY 2020-21 will support rapeseed and rapeseed oil prices.

Rising discount of soy oil prices to rapeseed kacchi ghani prices is likely to underpin rapeseed oil prices.

Rising premium of Jaipur kacchi ghani rapeseed oil over refined soy oil in domestic market is at Rs 160 (Rs 180) per 10 Kg will cap gains in rapeseed oil prices.

Jaipur kacchi ghani rapeseed oil premium over RBD palmolein is at Rs 240 (Rs 270) per 10 kg which is high will cap gains in rapeseed oil prices.

There was no import of canola oil in May. Imports of canola oil is 0.17 lakh tons in oil year 2019-20 (Nov-19-Oct-20) v/s 0.44 lakh tons last oil year indicating weak demand. There has been no imports of canola oil for last two months.

Markets are expected to trade sideways to higher in coming days on firm demand.

- Rapeseed oil import scenario- India imported 0.0 lakh tons rapeseed (Canola) oil in May 2020 v/s 0.0 lakh tons imports in May 2019. In the oil year 2019-20 (Nov 2019-May 2020) imports were 0.17 lakh tons compared to 0.44 lakh tons in last oil year, down 61.36 percent y-o-y.
- According to United States Department of Agriculture (USDA) April estimate, India's 2019/20 rapeseed oil import estimate have been reduced to 0.25 lakh tons from 1.2 lakh tons in its earlier estimate, lower by 79.2 percent. Rapeseed oil consumption have been reduced to 27.30 lakh tons from 27.80 lakh tons in its earlier estimate, lower by 1.8 percent. End stocks of rapeseed oil in 2019/20 raised to 1.89 lakh ton from 1.38 lakh tons, lower by 36.95 percent.
- Currently, RM oil at Jaipur market, (expeller) is offered at Rs 987 (Rs 960) per 10 Kg, and at Kota market, it is offered at Rs 960 (Rs 930) per 10 kg as on June 5, 2020. Values in brackets are figures of last week.
- We expect RM seed oil prices to trade sideways to firm tone in the coming days.

**Price Outlook:** Rapeseed oil (without GST) prices in Kota may stay in the range of Rs 920-1020 per 10 Kg.

**Sunflower oil Fundamental Review and Analysis:-****Domestic Front**

- Sunflower oil price rose during the week in Chennai on firm demand, rise in international prices of sunflower oil and rise in competing oils prices.

Sunflower oil price rose less at high seas compared to CNF markets indicating weak demand at high seas.

Demand of sunflower oil is firm as replacement oil due to less use of palm oil in HoReCa segment leading to higher use

of sunflower oil at Indian homes. There has been demand gains in sunflower oil up to 20 percent in some states. This will lead to higher imports of sunflower oil in coming months.

Refiners are running at normal capacity.

Vessel discharge at Indian ports is slow due to port congestion. There are no problems in transportation. State border impediments for movement of sunflower oil is open normal with opening of Indian state borders from June 1.

There is supply disruption from Ukraine due to quota system on exports of sunflower oil from where India procures 95 percent of its imports has supported domestic sunflower oil prices.

Prices of sunflower oil rose in India on rise in palm oil and soy oil prices.

Demand of sunflower oil fell due to rise in its prices during lockdown.

Import parity is negative and refining margins are negative may lead to lower imports of sunflower oil in coming months. Rising premium of sunflower oil over soy oil and palm oil at CNF markets will slow imports.

In domestic market, sunflower oil prices premium over soy oil is at Rs 105 (Rs 115 last week) per 10 kg, which indicates that sunflower oil prices is diverging at domestic markets and CNF markets. At present premium of sunflower oil over soy oil at CNF markets is at USD 117 (USD 130 last week) per ton which is high and may underpin prices.

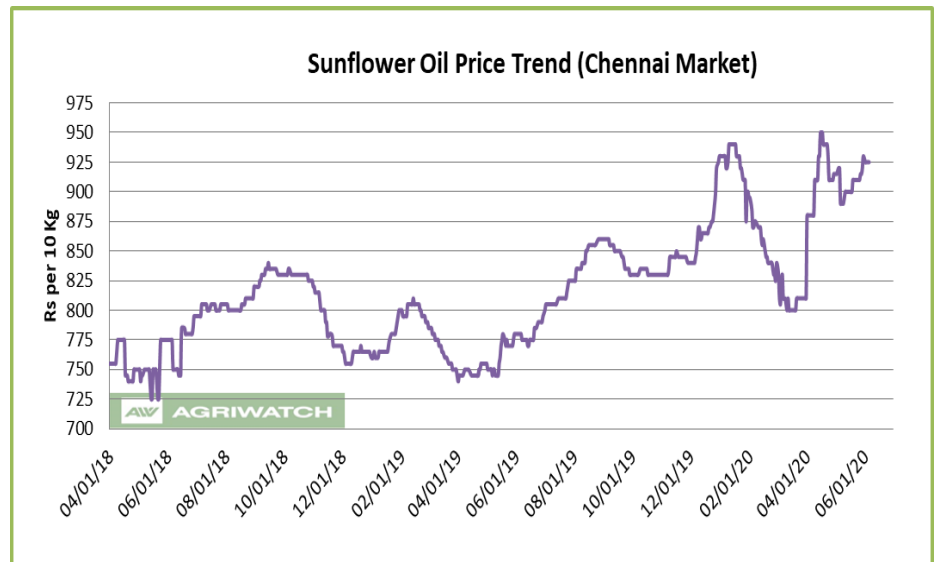
Sunflower oil premium over RBD palmolein at CNF India is at USD 210 (USD 210 last week) which will decrease imports.

In domestic market refined sunflower oil (Chennai) premium over RBD palmolein (Kandla) is at Rs 185 (Rs 195) per 10 kg which is high will underpin sunflower oil in domestic market.

In domestic market, high groundnut oil premium over sunflower oil at Chennai market is at Rs 405 (Rs 450 last week) per 10 kg will support sunflower oil prices.

Prices may be supported on seasonal uptrend of prices.

In top producer Ukraine Sunflower crop in 2020-21 is expected to be lower than last year. This will keep sunflower CNF prices supported in coming months.





Prices of sunflower oil are expected to rise on firm, rise in competing oils prices and rise in prices of sunflower oil in international markets.

- Sunflower oil imports scenario- According to Solvent Extractors Association (SEA), Sunflower oil imports rose 1.5 percent y-o-y in May to 1.33 lakh tons from 1.31 lakh tons in May 2019. Imports in oil year 2019-20 (November 2019-May 2020) were reported higher by 11.33 percent y-o-y at 16.4 lakh tons compared to 14.73 lakh tons in last oil year.
- According to United States Department of Agriculture (USDA) May estimate, India's 2020/21 sunflower oil import estimate have been reduced to 2.6 MMT from 2.7 MMT in 2019/20, lower by 3.70 percent y-o-y. Sunflower oil consumption have been kept unchanged at 2.8 MMT in 2020/21 compared to 2019/20.
- On the trade front, CIF sunflower oil prices (Ukraine origin) at West coast of India quoted at USD 835 (USD 825) per ton for JAS delivery. CNF sun oil (Ukraine origin) May monthly average was at USD 789.73 per ton compared to USD 760.60 per ton in April. Values in brackets are figures of last week.
- Prices are likely to stay in the range of USD 790-880 per ton in the near term. CNF Sunflower oil premium over CDSO is hovering remain at USD 119 (USD 130 last week) per ton for May delivery. CNF sunflower oil premium over RBD palmolein is hovering around USD 185 (USD 210) per ton.
- Currently, refined sunflower oil at Chennai market is Rs 925 (Rs 920) per 10 Kg, and at Kandla/Mudra market, it is offered higher at Rs 925 (Rs 880) per 10 kg as on June 5, 2020. Values in brackets are figures of last week.
- We expect sunflower oil prices to trade sideways to firm tone in the coming days.

**Price Outlook:** Sunflower oil (without GST) prices in Chennai may stay in the range of Rs 860-940 per 10 Kg.

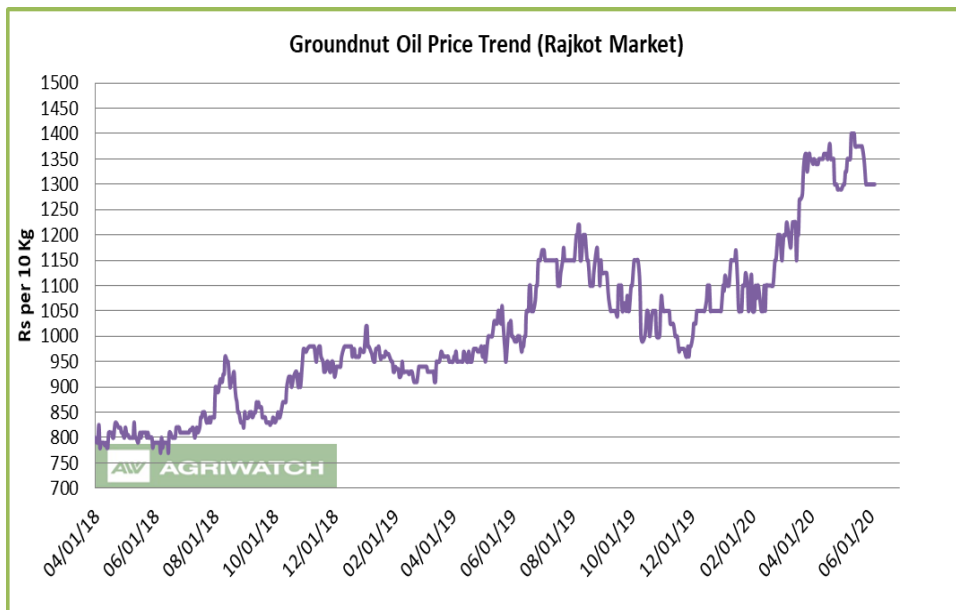
### Groundnut oil Fundamental Review and Analysis:-

#### Domestic Front

- Groundnut oil market fell on account weak demand.

Groundnut oil demand fell due to rise in its prices during lockdown and high premium over soy oil, sunflower oil and palm oil prices.

Groundnut oil supply is constrained as stock of groundnut in the market is less due to higher crushing, exports, NAFED procurement, direct



consumption and seed demand. This has led to low supply of groundnut oil in the market.

Crushers are running at normal capacity. Mandis are operating normally and supplies been restored. Mills are not facing labor shortage while demand of groundnut meal is low leading to lower crush of groundnut. Trucks are available and trucks are not facing problem in crossing state borders due to opening of country from June 1. Prices fell on seasonal uptrend of prices. Prices may fall due to high volatility in prices. Higher volatility in prices underpin prices. Retail demand may weaken due to higher prices.

Prices fell despite rise in in palm oil, soy oil and sunflower oil prices indicating weak demand.

NAFED procurement is over in Gujarat and Rajasthan. NAFED is procuring in South India. NAFED has procured 7.21 lakh tons of K-19 groundnut. NAFED stocks of K-18 groundnut is 1.38 lakh tons at the end of sale of groundnut. So, total stocks of groundnut after procurement is 8.59 lakh tons.

Exports of groundnut has resumed is slow due to port congestion will lead to diversion of groundnut towards crushing.

In South India, prices fared weak trend on weak demand at higher levels. Arrival of demand season when demand increased due to use in pickles, chatni and other value added products will keep demand firm in coming days. Prices may stay elevated in South India during May-July period. Prices may fall on parity with Gujarat.

Groundnut oil prices are expected to fall on weak demand.

- On the price front, currently the groundnut oil prices in Rajkot is 13,000 (Rs 13,000) per quintal and it was 13,000 (Rs 13,500) per quintal in Chennai market on June 5, 2020. Values in brackets are figures of last week.
- Groundnut oil prices are likely to trade lower in the coming days.

#### Price Outlook:

Groundnut oil (without GST) in Mumbai market is likely to trade in the price band of Rs 1200-1400 per 10 Kg

### Coconut Oil Fundamental Review and Analysis:- Domestic Front

- Coconut oil benchmark market of Kangayam traded weak due to weak demand.

Prices may fall despite rise in palm oil prices indicating weak demand.

Retail demand may decrease due to sharp rise in prices of coconut oil prices.

Demand of copra is weak due to lower demand of coconut oil from North India due to coronavirus leading to shutdown of many mills. Farmers have huge stock of copra

and are willing to sell at lower prices. So, expect coconut oil prices to trend lower in coming month.

Millers are operating at lower capacity due to weak demand in food and industrial segment. Mills are facing weak demand in branded segment, as demand is more in unbranded segment, which are generally adulterated and priced dearly. Demand of coconut is low as there is demand destruction in costly oils like coconut oil, on weak sentiment in the country due to coronavirus

Prices may fall due to weak demand.

Prices may be underpinned on seasonal downtrend of prices.

Demand of coconut oil may shift to other oils like palm oil due to high price difference between other oils and coconut oil. However, coconut oil consumers are loyal consumers and shift is limited.

International trade of copra and coconut oil is limited due to congestion at various ports in India. Therefore, trade is limited limiting supply of raw material in the market. This will prompted the mills to procure domestic copra for crushing.

Activity in the market has started to pickup as markets have opened and supplies have been restored.

Stockists and retailers are not stocking, as they are not certain of prices and are active in ready markets.

Corporate demand, which is one of the major contributors, is weak.

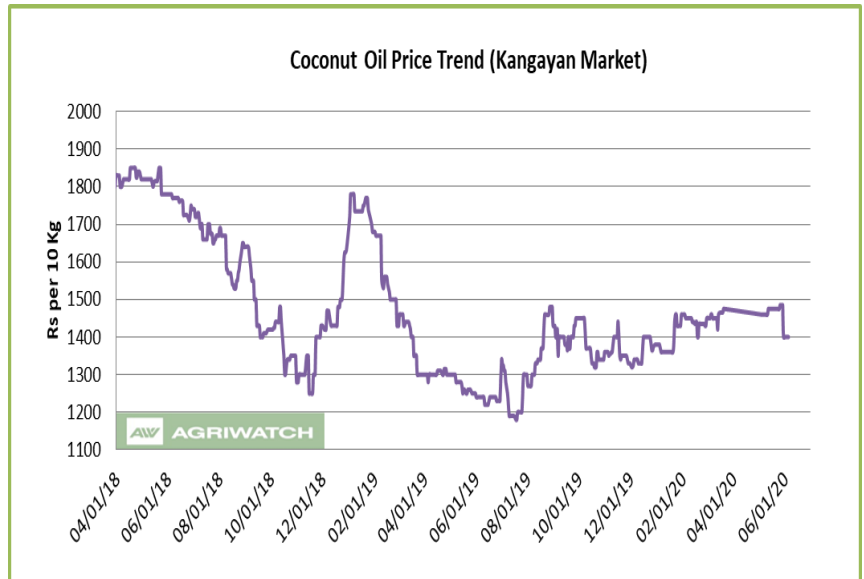
Traders and upcountry buyers are have limited activity in the market due to weak demand and uncertainty in the prices.

Price trend is biased towards upside.

Prices of coconut oil may fall due to weak demand. Household consumption will fall due to rise in prices during lockdown.

Coconut oil prices are expected to be weak in days ahead.

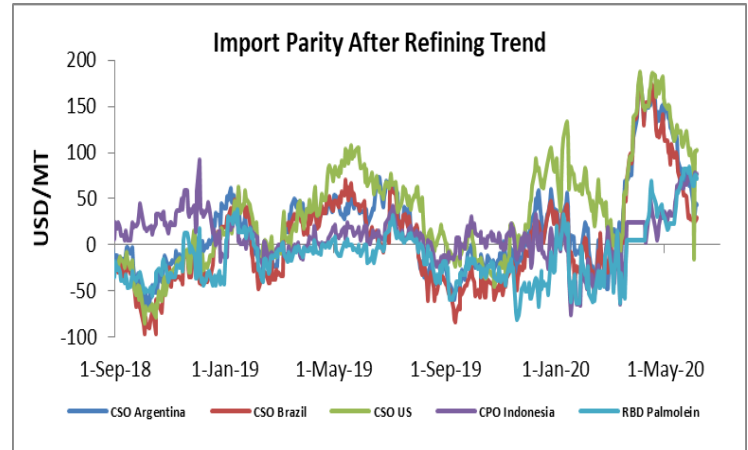
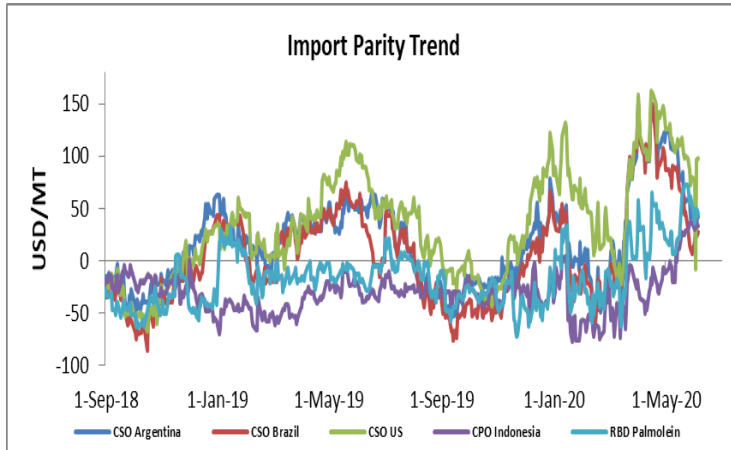
- On the price front, currently the coconut oil prices in Kochi is hovering remain at Rs 15,300 (Rs 15,300) per quintal, and was quoted at 14,000 (Rs 14,150) per quintal in Erode market on June 5, 2020.



**Price Outlook:** Coconut oil (without GST) prices in Erode may stay in the range of Rs 1300-1500 per 10 Kg.

### Import Parity Trend

#### Import Parity After Refining in US dollar per ton (Weekly Average)



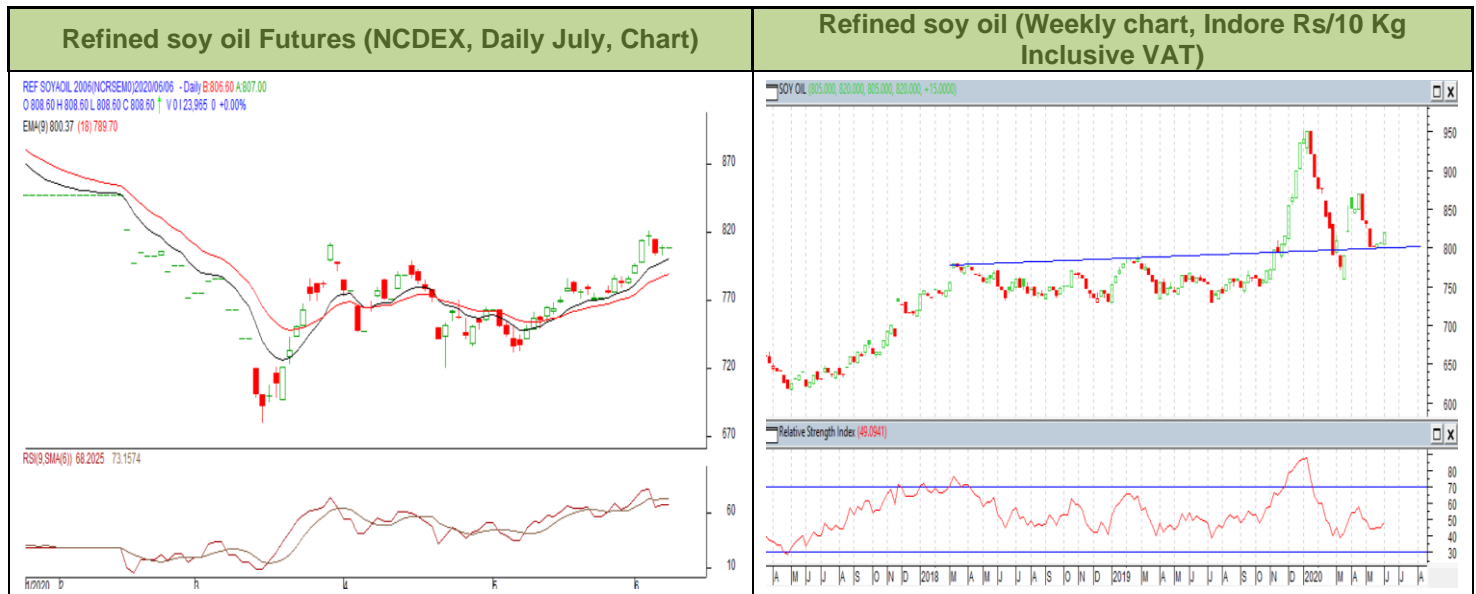
	CSO Argentina	CSO Brazil	CSO US	CPO Indonesia	RBD Palmolein
<b>May 15-May 22, 2020</b>	72.78	60.27	112.00	65.71	73.69
<b>May 23-May 29, 2020</b>	71.07	39.69	108.16	69.56	80.79
<b>May 30-Jun 5, 2020</b>	38.63	26.76	75.52	74.80	70.18

### Outlook:-

Refining margins parity fell for crude soy oil from Argentina due to rise in prices of soy oil in international markets. We expect soy oil refining margins parity to remain firm in medium term due to expectation of higher prices of soy oil in Indian markets.

Refining margins of CPO and RBD palmolein rose on rise in prices of palm oil in Indian market. We expected CPO parity to remain firm in medium term due to rise in in prices of palm products in Indian markets.

### Technical Analysis (Refined soy oil)



**Outlook – Refined soybean oil witnessed uptrend during the week in review and is likely to trade with a sideways to firm tone in the coming days.**

- Daily chart of refined soy oil at NCDEX depicts uptrend during the week in review. We expect prices to trade sideways to firm tone in the near term.
- Any close above 810 in weekly might take the prices above 830 levels.
- Expected price band for next week is 740-830 level in near to medium term. RSI and MACD is suggesting uptrend in the market.

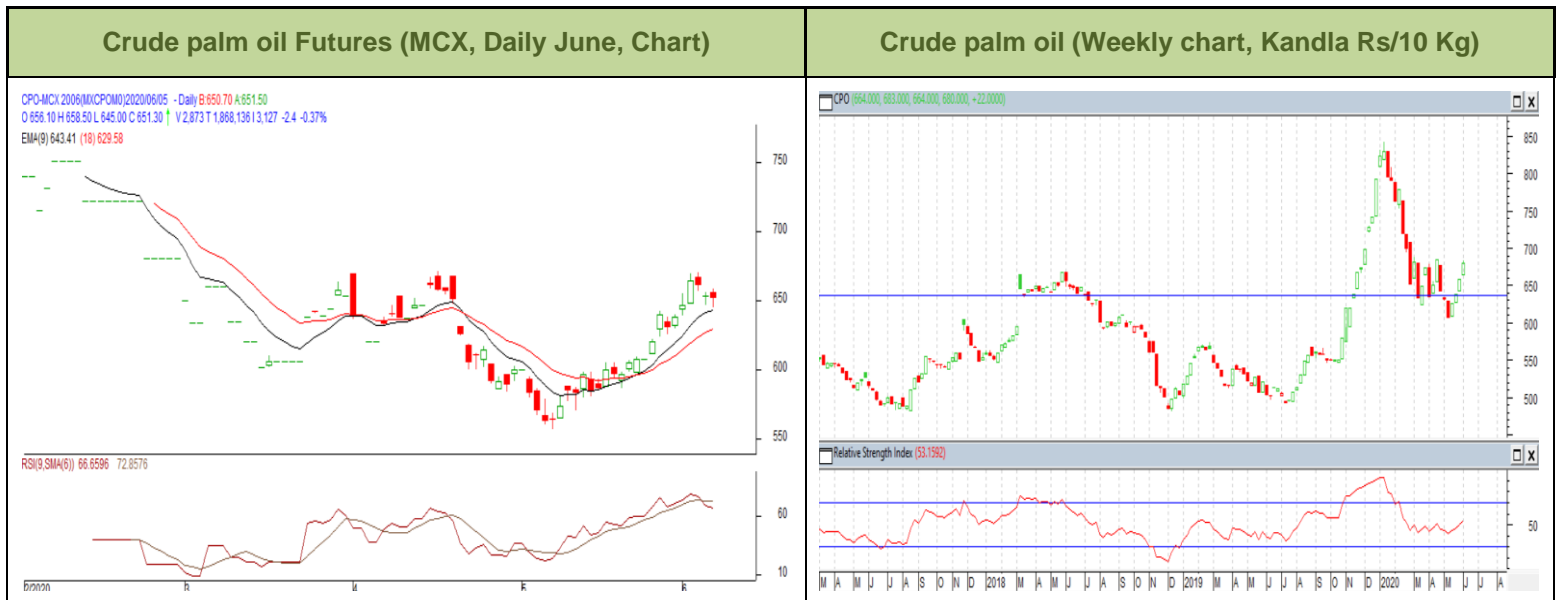
**Strategy:** Market participants are advised to go long above 805 levels for a target of 820 and 825 with a stop loss at 795 on closing basis.

#### RSO NCDEX (July)

Support and Resistance				
S2	S1	PCP	R1	R2
780.00	800.00	808.40	820.00	830.00

**Spot Market outlook:** Refined soy oil Indore (without GST) is likely to stay in the range of Rs 780-880 per 10 Kg.

### Technical Analysis (Crude Palm oil)



**Outlook - Prices show uptrend in prices during the week. We expect that CPO June contract may trade sideways to firm note.**

- Candlestick in weekly chart of crude palm oil at MCX depicts firm trend in the prices. We expect prices to trade with a sideways to firm note in the near term.
- Any close above 660 in weekly chart may bring the prices to 680 levels.
- Expected price band for next week is 590-670 level. RSI and MACD are suggesting uptrend in prices in the coming week.

**Strategy:** Market participants are advised to go long in CPO above 650 for a target of 675 and 680 with a stop loss at 640 on closing basis.

#### CPO MCX (June)

Support and Resistance				
S2	S1	PCP	R1	R2
630.00	642.00	656.00	670.00	690.00

**Spot Market outlook:** Crude palm oil (without GST) is likely to stay in the range of Rs 640-720 per 10 Kg.

Veg. Oil Prices at Key Spot Markets
**Edible Oil Prices at Key Market:**

Commodity	Centre	Prices(Per 10 Kg)		Change
		05-Jun-20	29-May-20	
Refined Soybean Oil	Indore	820	805	15
	Indore (Soy Solvent Crude)	785	770	15
	Mumbai	810	800	10
	Mumbai (Soy Degum)	775	760	15
	Kandla/Mundra	800	790	10
	Kandla/Mundra (Soy Degum)	775	745	30
	Kolkata	800	790	10
	Delhi	850	825	25
	Nagpur	892	885	7
	Rajkot	805	780	25
	Kota	825	800	25
	Hyderabad	Unq	0	-
	Akola	833	823	10
	Amrawati	838	825	13
	Bundi	830	805	25
	Jalna	902	895	7
	Solapur	882	875	7
	Dhule	902	895	7
Palm Oil*	Kandla (Crude Palm Oil)	714	691	23
	Kandla (RBD Palm oil)	725	725	Unch
	Kandla RBD Pamolein	777	751	26
	Kakinada (Crude Palm Oil)	696	683	14
	Kakinada RBD Pamolein	777	746	32
	Haldia Pamolein	777	746	32
	Chennai RBD Pamolein	788	751	37
	KPT (krishna patnam) Pamolein	782	756	26
	Mumbai RBD Pamolein	790	761	28
	Mangalore RBD Pamolein	788	751	37
	Tuticorin (RBD Palmolein)	804	770	35
	Delhi	820	795	25
	Rajkot	788	756	32
	Hyderabad	810	785	25
	PFAD (Kandla)	494	462	32
	Refined Palm Stearin (Kandla)	696	683	14
	Superolien (Kandla)	772	772	Unch
	Superolien (Mumbai)	782	782	Unch

\* inclusive of GST



Refined Sunflower Oil	Chennai	925	920	5
	Mumbai	925	910	15
	Mumbai(Expeller Oil)	875	870	5
	Kandla (Ref.)	880	880	Unch
	Hyderabad (Ref)	930	920	10
	Latur (Expeller Oil)	875	845	30
	Chellakere (Expeller Oil)	885	855	30
	Erode (Expeller Oil)	950	940	10
Groundnut Oil	Rajkot	1300	1300	Unch
	Chennai	1300	1370	-70
	Delhi	1320	1400	-80
	Hyderabad *	1340	1380	-40
	Mumbai	1430	1430	Unch
	Gondal	1300	1330	-30
	Jamnagar	1300	1330	-30
Rapeseed Oil/Mustard Oil	Jaipur (Expeller Oil)	987	960	27
	Jaipur (Kacchi Ghani Oil)	1015	987	28
	Kota (Expeller Oil)	960	930	30
	Kota (Kacchi Ghani Oil)	1010	985	25
	Neewai (Expeller Oil)	990	965	25
	Neewai (Kacchi Ghani Oil)	1000	975	25
	Bharatpur (Kacchi Ghani Oil)	1000	980	20
	Sri-Ganga Nagar(Exp Oil)	960	925	35
	Sri-Ganga Nagar (Kacchi Ghani Oil)	1000	965	35
	Mumbai (Expeller Oil)	850	850	Unch
	Kolkata(Expeller Oil)	1000	1000	Unch
	New Delhi (Expeller Oil)	985	930	55
	Hapur (Expeller Oil)	913	915	-2
	Hapur (Kacchi Ghani Oil)	943	945	-2
	Agra (Kacchi Ghani Oil)	1005	985	20
Refined Cottonseed Oil	Rajkot	820	800	20
	Hyderabad	810	815	-5
	Mumbai	825	820	5
	New Delhi	780	760	20
Coconut Oil	Kangayan (Crude)	1400	1415	-15
	Cochin	1530	1530	Unch
Sesame Oil	New Delhi	1250	1150	100

	Mumbai	Unq	0	-
<b>Kardi</b>	Mumbai	Unq	0	-
<b>Rice Bran Oil (40%)</b>	New Delhi	720	685	<b>35</b>
<b>Rice Bran Oil (4%)</b>	Punjab	760	760	<b>Unch</b>
<b>Malaysia Palmolein USD/MT</b>	FOB	598	560	<b>38</b>
	CNF India	625	605	<b>20</b>
<b>Indonesia CPO USD/MT</b>	FOB	578	548	<b>30</b>
	CNF India	615	595	<b>20</b>
<b>RBD Palm oil (Malaysia Origin USD/MT)</b>	FOB	593	558	<b>35</b>
<b>RBD Palm Stearin (Malaysia Origin USD/MT)</b>	FOB	573	550	<b>23</b>
<b>RBD Palm Kernel Oil (Malaysia Origin USD/MT)</b>	FOB	750	710	<b>40</b>
<b>Palm Fatty Acid Distillate (Malaysia Origin USD/MT)</b>	FOB	528	510	<b>18</b>
<b>Crude palm Kernel Oil India (USD/MT)</b>	CNF India	Unq	710	-
<b>Ukraine Origin CSFO USD/MT Kandla</b>	CIF	835	823	<b>12</b>
<b>Rapeseed Oil Rotterdam Euro/MT</b>	FOB	744	734	<b>10</b>
<b>Argentina FOB (\$/MT)</b>		<b>4-Jun-20</b>	<b>28-May-20</b>	<b>Change</b>
<b>Crude Soybean Oil Ship</b>		654	622	<b>32</b>
<b>Refined Soy Oil (Bulk) Ship</b>		677	644	<b>33</b>
<b>Sunflower Oil Ship</b>		735	715	<b>20</b>
<b>Cottonseed Oil Ship</b>		634	602	<b>32</b>
<b>Refined Linseed Oil (Bulk) Ship</b>		Unq	0	-
<b>* indicates including GST</b>				

\*\*\*\*\*

#### Disclaimer

The information and opinions contained in the document have been compiled from sources believed to be reliable. The company does not warrant its accuracy, completeness and correctness. Use of data and information contained in this report is at your own risk. This document is not, and should not be construed as, an offer to sell or solicitation to buy any commodities. This document may not be reproduced, distributed or published, in whole or in part, by any recipient hereof for any purpose without prior permission from the Company. IASL and its affiliates and/or their officers, directors and employees may have positions in any commodities mentioned in this document (or in any related investment) and may from time to time add to or dispose of any such commodities (or investment). Please see the detailed disclaimer at <http://www.agriwatch.com/disclaimer.php> 2020 Indian Agribusiness Systems Ltd.