

Commodity: Wheat  
Contract: May

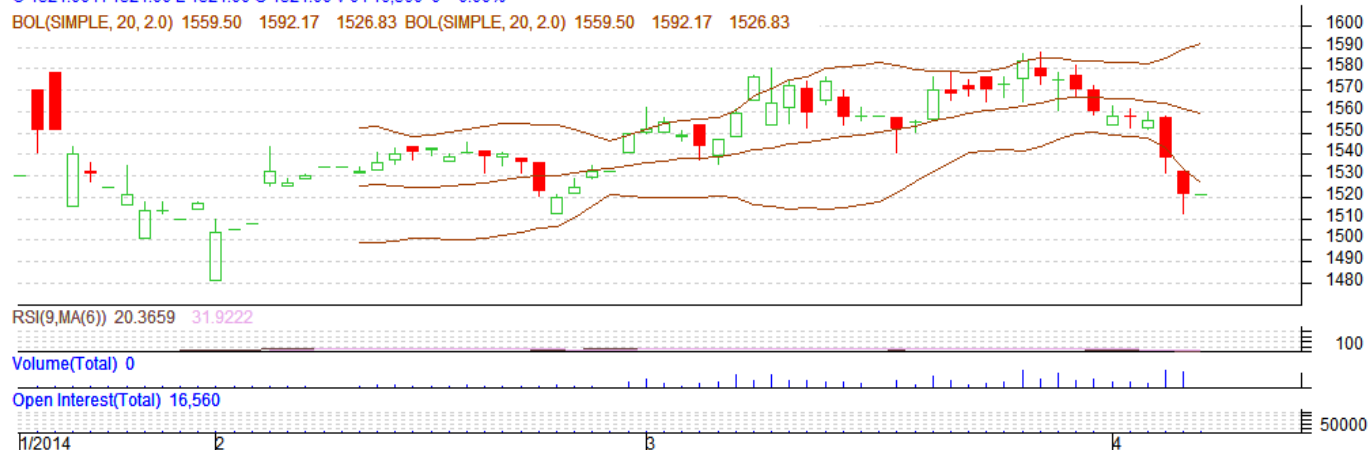
Exchange: NCDEX  
Expiry: May 20th, 2014

## Wheat

WHEAT DELHI 1405(NCWHDK4)2014/04/08 - Daily

O 1521.00 H 1521.00 L 1521.00 C 1521.00 V O I 16,560 0 +0.00%

BOL(SIMPLE, 20, 2.0) 1559.50 1592.17 1526.83 BOL(SIMPLE, 20, 2.0) 1559.50 1592.17 1526.83



### Technical Commentary:

- Candlesticks chart shows downward movement in the market.
- In yesterday's trading rise in OI and fall in prices indicates short buildup.
- Oscillator RSI is in overbought region.

### Strategy: Sell

			S2	S1	PCP	R1	R2
Wheat	NCDEX	April	1480	1495	1521	1540	1550
Intraday Trade Call			Call	Entry	T1	T2	SL
Wheat	NCDEX	April	<b>Sell</b>	1523	1515	1511	1527.5

\*Do not carry forward the position until the next day.

### Disclaimer

The information and opinions contained in the document have been compiled from sources believed to be reliable. The company does not warrant its accuracy, completeness and correctness. Use of data and information contained in this report is at your own risk. This document is not, and should not be construed as, an offer to sell or solicitation to buy any commodities. This document may not be reproduced, distributed or published, in whole or in part, by any recipient hereof for any purpose without prior permission from the Company. IASL and its affiliates and/or their officers, directors and employees may have positions in any commodities mentioned in this document (or in any related investment) and may from time to time add to or dispose of any such commodities (or investment). Please see the detailed disclaimer at <http://www.agriwatch.com/Disclaimer.php> © 2014 Indian Agribusiness Systems Pvt Ltd.