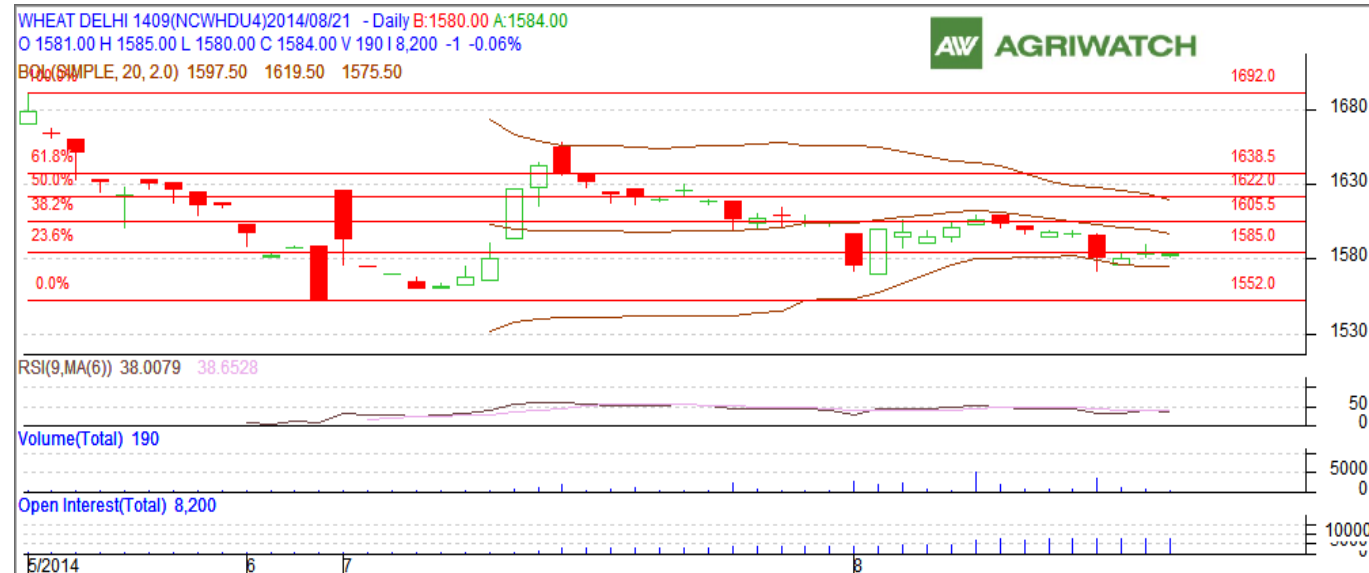


Commodity: Wheat
Contract: Sept

Exchange: NCDEX
Expiry: Sept 19th, 2014

Wheat



Technical Commentary:

- Candlesticks chart shows range bound movement in the market.
- In yesterday's trading fall in OI and rise in prices indicates weak market.
- RSI is in neutral region.

Strategy: Buy

			S2	S1	PCP	R1	R2
Wheat	NCDEX	Sept	1550	1560	1584	1610	1625
Intraday Trade Call			Call	Entry	T1	T2	SL
Wheat	NCDEX	Sept	Buy	1582	1585	1588	1581

*Do not carry forward the position until the next day.

Disclaimer

The information and opinions contained in the document have been compiled from sources believed to be reliable. The company does not warrant its accuracy, completeness and correctness. Use of data and information contained in this report is at your own risk. This document is not, and should not be construed as, an offer to sell or solicitation to buy any commodities. This document may not be reproduced, distributed or published, in whole or in part, by any recipient hereof for any purpose without prior permission from the Company. IASL and its affiliates and/or their officers, directors and employees may have positions in any commodities mentioned in this document (or in any related investment) and may from time to time add to or dispose of any such commodities (or investment). Please see the detailed disclaimer at <http://www.agriwatch.com/Disclaimer.php> © 2014 Indian Agribusiness Systems Pvt Ltd.