

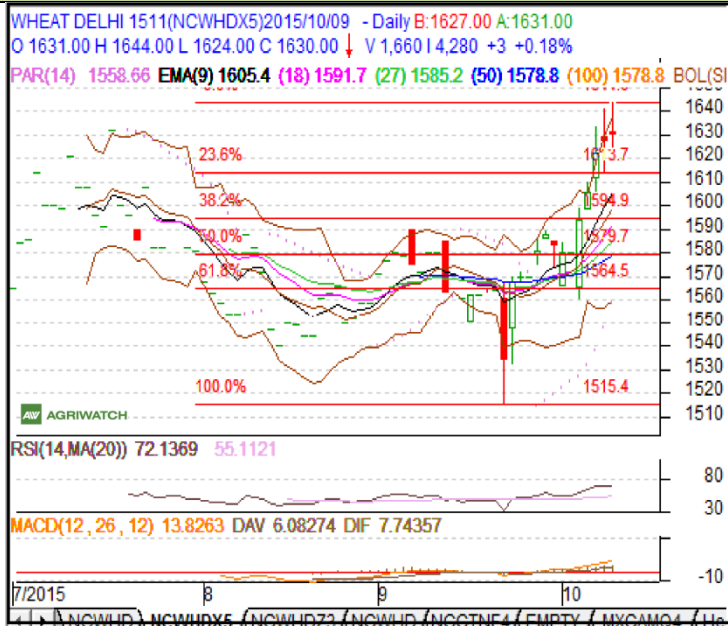
Commodity: Wheat
 Contract: Nov

 Exchange: NCDEX
 Expiry: Nov 20th, 2015

Wheat – Technical Outlook
Technical Commentary:

- Last candlestick depicts weakness in the market.
- RSI is moving down in neutral zone.
- Prices closed below 9 and 18 days EMAs.
- Decrease in prices lower volume and OI indicates to short build up.

Wheat prices are likely to trade down on Monday's session.



Strategy: Buy on dip

Intraday Supports & Resistances			S2	S1	PCP	R1	R2
Wheat	NCDEX	Nov	1598	1614	1630	1646	1668
Intraday Trade Call			Call	Entry	T1	T2	SL
Wheat	NCDEX	Nov	Sell below	1642	1636	1632	1645

* Do not carry-forward the position next day.

Disclaimer

The information and opinions contained in the document have been compiled from sources believed to be reliable. The company does not warrant its accuracy, completeness and correctness. Use of data and information contained in this report is at your own risk. This document is not, and should not be construed as, an offer to sell or solicitation to buy any commodities. This document June not be reproduced, distributed or published, in whole or in part, by any recipient hereof for any purpose without prior permission from the Company. IASL and its affiliates and/or their officers, directors and employees June have positions in any commodities mentioned in this document (or in any related investment) and June from time to time add to or dispose of any such commodities (or investment). Please see the detailed disclaimer at <http://www.agriwatch.com/Disclaimer.asp>
 © 2015 Indian Agribusiness Systems Pvt. Ltd.