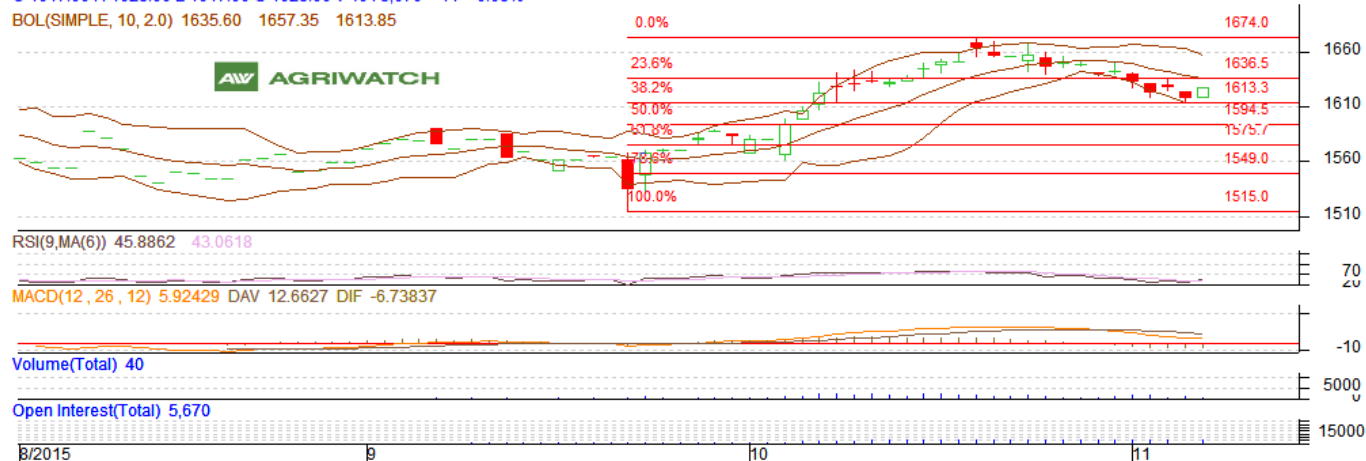


Commodity: Wheat
Contract : Nov

Exchange: NCDEX
Expiry: Nov 20th, 2015

Wheat

WHEAT DELHI 1511(NCWHDX5)2015/11/06 - Daily B:1616.00 A:1626.00
O 1617.00 H 1628.00 L 1617.00 C 1628.00 V 40 I 5,670 +11 +0.68%
BOL(SIMPLE, 10, 2.0) 1635.60 1657.35 1613.85



Technical Commentary:

- Candlesticks chart shows downward movement in the market.
- RSI is moving up in neutral region.
- Fall in prices and rise in O.I. indicates long buildup.

Strategy: Buy

			S2	S1	PCP	R1	R2
Wheat	NCDEX	Nov	1575	1600	1617	1640	1655
Intraday Trade Call			Call	Entry	T1	T2	SL
Wheat	NCDEX	Nov	Buy	1617	1628	1633	1611

*Do not carry forward the position until the next day.

Disclaimer

The information and opinions contained in the document have been compiled from sources believed to be reliable. The company does not warrant its accuracy, completeness and correctness. Use of data and information contained in this report is at your own risk. This document is not, and should not be construed as, an offer to sell or solicitation to buy any commodities. This document may not be reproduced, distributed or published, in whole or in part, by any recipient hereof for any purpose without prior permission from the Company. IASL and its affiliates and/or their officers, directors and employees may have positions in any commodities mentioned in this document (or in any related investment) and may from time to time add to or dispose of any such commodities (or investment). Please see the detailed disclaimer at <http://www.agriwatch.com/Disclaimer.php> © 2015 Indian Agribusiness Systems Pvt Ltd.