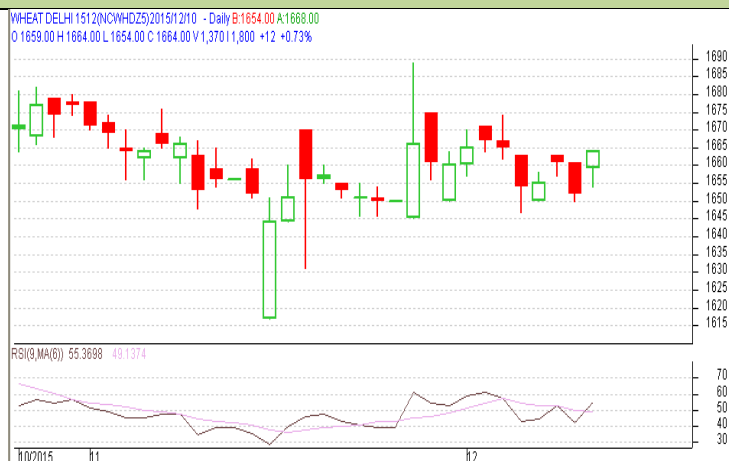


Commodity: Wheat
Contract: Dec
Exchange: NCDEX
Expiry: Dec 25th, 2015
Wheat – Technical Outlook
Technical Commentary:

- Last candlestick depicts bearishness in the market.
- RSI is moving up in neutral zone.
- Prices closed below 9 and 18 days EMAs.

Prices are expected to move downward on Friday's session.


Strategy: Sell

Intraday Supports & Resistances			S2	S1	PCP	R1	R2
Wheat	NCDEX	Dec	1610	1620	1664	1670	1675
Intraday Trade Call			Call	Entry	T1	T2	SL
Wheat	NCDEX	Dec	Sell	Below 1655	1645	1640	1661

* Do not carry-forward the position next day.

Disclaimer

The information and opinions contained in the document have been compiled from sources believed to be reliable. The company does not warrant its accuracy, completeness and correctness. Use of data and information contained in this report is at your own risk. This document is not, and should not be construed as, an offer to sell or solicitation to buy any commodities. This document June not be reproduced, distributed or published, in whole or in part, by any recipient hereof for any purpose without prior permission from the Company. IASL and its affiliates and/or their officers, directors and employees June have positions in any commodities mentioned in this document (or in any related investment) and June from time to time add to or dispose of any such commodities (or investment). Please see the detailed disclaimer at <http://www.agriwatch.com/Disclaimer.asp>
 © 2015 Indian Agribusiness Systems Pvt. Ltd.