

Commodity: Wheat
Contract: Jan

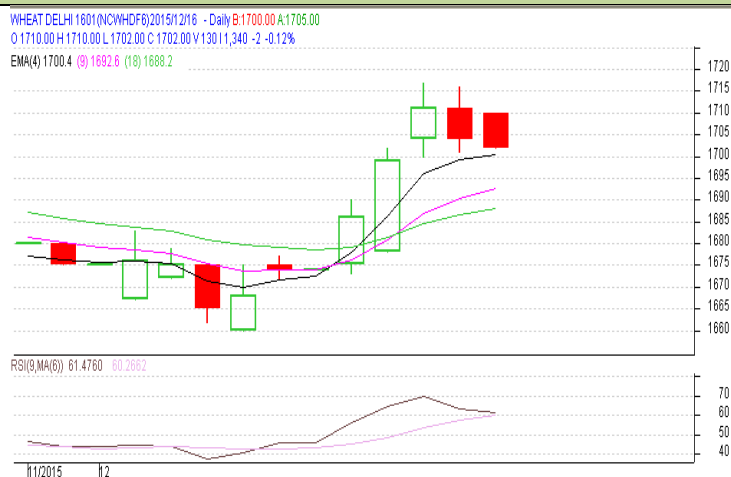
Exchange: NCDEX
Expiry: Jan 20th, 2016

Wheat – Technical Outlook

Technical Commentary:

- Last candlestick depicts bearishness in the market.
- RSI is moving downward in neutral zone.
- Prices closed below 9 and 18 days EMAs.

Prices are expected to move upward on Thursday's session.



Strategy: Buy

Intraday Supports & Resistances			S2	S1	PCP	R1	R2
Wheat	NCDEX	Dec	1660	1670	1702	1740	1750
Intraday Trade Call			Call	Entry	T1	T2	SL
Wheat	NCDEX	Dec	Buy	Above 1704	1710	1715	1701.5

* Do not carry-forward the position next day.

Disclaimer

The information and opinions contained in the document have been compiled from sources believed to be reliable. The company does not warrant its accuracy, completeness and correctness. Use of data and information contained in this report is at your own risk. This document is not, and should not be construed as, an offer to sell or solicitation to buy any commodities. This document June not be reproduced, distributed or published, in whole or in part, by any recipient hereof for any purpose without prior permission from the Company. IASL and its affiliates and/or their officers, directors and employees June have positions in any commodities mentioned in this document (or in any related investment) and June from time to time add to or dispose of any such commodities (or investment). Please see the detailed disclaimer at <http://www.agriwatch.com/Disclaimer.asp>
© 2015 Indian Agribusiness Systems Pvt. Ltd.